

Welshpool & District Horticultural Society

56th Spring Show – “The Romance of the Rose”

Once again the Welshpool Flower Show started the Melbourne Cup break celebrating Spring and all that we grow. Congratulations to Kate Crowl of Foster with Best Exhibit in Show for the magnificent Hosta plant with not a snail bite to be seen.

The roses were a little shy (they haven't enjoyed the weather just like us) but still made an impressive sight. Arie Bos was awarded the Rose Society Bronze Medal for the Best Rose – ‘Ian Thorpe’ and Margaret Stokes exhibited the best container of roses.

The school children's work delighted visitors with creativity and colour. The “flowers” decorated with weaving and their paintings that created a screen in the foyer emphasising the show theme Romancing the Rose were a great addition to the show.

Cut Flowers and Shrubs added so much to the display and Pelargoniums exhibited by Rosslyn McPherson won in both classes ‘A’ and ‘C’.



(Above) Best Exhibit in Show – Memorial Trophy & RHSV S.S. McKay Gold Medal was awarded to the Best Exhibit in ‘D’ Plants growing in pots – Hosta exhibited by Kate Crowl

(Right) Primary School children's decorations



Attention all Scribes and readers – items for the December newsletter must be received by Friday 16th December. Please also note there will be no newsletter issued in January 2017.

Disclaimer

This newsletter is an independent self-funded publication produced by staff and volunteers of the RTC and it does not reflect the opinions of the Committee members, South Gippsland Shire, or the Department of Planning and Community Development.



TRADING HOURS

MON - FRI

11.00AM - 4.00PM

- BENDIGO BANK
- CENTRELINK
- VETERANS AFFAIRS
- TAXATION INFORMATION
- MASSAGE (by appointment)
- V/LINE TICKETING OFFICE
- INTERNET ACCESS
- ROOM HIRE
- PASSPORT APPLICATIONS
- VISITING ACCOUNTANT (by appointment)
- DIABETES CLINIC (by appointment)
- TOURIST INFORMATION
- FAX, COPY & PRINT SERVICES



Centrelink Website

The Centrelink website (www.centrelink.gov.au) has been incorporated into the Department of Human Services website humanservices.gov.au. The new site is a convenient, single entry point for health, social and welfare payments and services.

Any questions regarding your payments or entitlements, this would be your first port of call.

- ***You are able to register online and access details of your account.***
- ***Find out the latest information regarding services.***
- ***Calculations can be done to work out family assistance.***
- ***Access forms and brochures.***

A touch screen computer is available at the Welshpool Rural Transaction Centre for your use.

Staff at the Centrelink agency are able to assist you with registration etc.



VLINE BUS SERVICES

**Purchase tickets at the
Rural Transaction Centre or
collect a VLINE Bus Timetable**

DIABETES CLINIC

Next Visit

Thursday, 22nd December

If you would like an appointment
or have any queries, please contact

Karen on 03 5683 9780

Should anyone need to speak with the DVA
please contact:

Michael or Phil: (03) 51 266 604

or

Toll Free: 1300 551 0177

Situated at the Morwell Centrelink Office
CNR Chapel & Elgin Streets



Australian Government
Department of Veterans' Affairs

Phil Head

VETERANS' AFFAIRS NETWORK

Email: philip.head@dva.gov.au

Welshpool agency

Join us and be part of something bigger.

Drop into your nearest agency at Welshpool Rural Transaction Centre,
12-14 Main Street or phone 5688 1051.



Bendigo and Adelaide Bank Limited. ABN 11 068 049 178. AFSL 237879. (S56083) (10/16)

Recipes Wanted

We are compiling a local cook book and require your favourite recipes from entrée to dessert. (please submit photo to go with the recipe). Drop your recipes into Diane at Welshpool Outdoors, or Cath at the Post Office.

Proceeds from sales to go toward helping maintain the Memorial Hall.



TARRA VALLEY COMPUTERS

Ross Northmore

*Computer, Monitor and Printer Repairs
New & Used Computer Sales
Telephone: (03) 5189 1398*



Gibson Accounting

Kieran Olree

PH: (03) 5176 2031

Fax: (03) 5174 6313

101 Hotham Street
Traralgon, Vic 3844

Email: kieran@gibsonaccounting.com.au

I could be a morning person...



If morning happened around noon.

Kieran Olree is at the RTC every Wednesday

By appointment only - **(03) 5176 2031**

For more information and all the latest tax updates and handy hints for tax time, please visit Gibson's website:

www.gibsonaccounting.com.au



Xmas Lunch Bookings Now Open !

**Pier Hort Hotel
Waterfront Restaurant**

85-91 Lewis St
Port Welshpool
Ph:03 5688 1333

Champagne on Arrival

Traditional 3 Course Luncheon
&

Dessert Selection

Members \$75 Guests \$85 Under 12's \$30 Under 8's \$20

Bookings Essential Payment in full by Wednesday 14th December 2016



Welshpool Golf Club

Both the men's and ladies club championships have been played and finalised. The results were not entirely as expected with Paul Delaney winning the men's championship and the A Grade event with scores of 76-93-87-256 off 11 handicap. Runner up but with no chocolates but winning the handicap event on the final day was Nathan Lucas with scores of 89-87-92-268 off 20. The B Grade division winner was Graeme Brennan with scores of 92-102-100-300 off 21. Runner up was Russell Barwick with 102-100-98-300 off 24.

The Ladies championship was won by Di Walker with scores of 103-102-108-313 off 21. Runner up was Rachael Brown with 106-106-104-362 off 20. The B Grade winner was Jeanette Swann with scores of 125-115-122-362 off 32 with the runner up being Trish Latch 133-125-122-380 off 36.

Other results for the month have been-

Tuesday – P Janson and D Harris

Wednesday – R Brown and for the American \$ Some event – R Brown and T Latch

Friday – J Cashmore, B MacPherson, Pappy Pope (twice in a row)

Saturday – Monthly medal, Bob Easton and Nathan Lucas won the Star Medallist event, the 2 person ambrose was won by G Brennan/ A Hayes, Paul Delany for one stroke event and Alan Hayes for two stroke events

Sunday – G Brennan

Our Annual General Meeting was held on Tuesday 18th October with the following being elected to guide the club for the next twelve months.

President – Graham English

Vic Pres. – Russell Barwick

Mens Captain – Robert Wiggins

Vice Captain – Alan Hayes

Handicapper – Paul Delany

Lady President – Ann Skan

Lady Captain – Peta Barlow

Handicapper – Jeanette Swann

Secretary – Trish Latch

Treasurer – Sue Brown

Committee – Tom Welsh, Brian MacPherson and Jeff Cashmore

Membership fees for the coming year are:

Full Membership - \$185

Pensioner Membership - \$160

Country Membership - \$165

Junior Membership – under 18yrs - \$15

Rules of golf – IDENTIFYING BALL

Marking, lifting, and replacing is permitted – BUT 1 stroke penalty if done without giving marker or fellow competitor the opportunity to observe, OR if done when not necessary.

Sam Snead on fast green – “These greens are so fast I have to hold my putter over the ball and hit it with the shadow”

“He who has the fastest golf cart never has a bad lie”

Upcoming events

Sunday 13th Nov – Presentation Day

Sunday 27th Nov – Men's Plate Aggregate Teams event

Friday 9th December – Martha Revill Memorial Plate





Christmas is just around the corner

The RTC will have a number of different Christmas decorations on sale in the coming weeks, call in and brighten your home with some Christmas cheer.

calories



**TINY CREATURES THAT LIVE IN YOUR CLOSET
AND SEW YOUR CLOTHES A LITTLE BIT
TIGHTER EVERY NIGHT**

Port Welshpool News

MARKET

Sunday 20th November

9am – 2pm

Old Ferry Terminal Port Welshpool

Welshpool & District Primary School

With the warmer weather, it was great to be back in the Kitchen Garden. Grades P/1/2 had a busy session in the garden, weeding and planting some tomato and cucumber seed-lings. We found a lot of snails, so hopefully they will be kind to our new plants.

Meanwhile, Grades 3/4/5/6 were busy in the kitchen, preparing a variety of dishes from our recent harvests. On offer this week to try was a Moroccan broad bean dip, silver beet and feta muffins with a fresh herb and garlic butter and mini carrot cakes for dessert. Well done to all children for great cooperation and a big thank you to Miss Lind, Faye and to Hope who kindly volunteered her time to work with a group.

Mrs Callcott



PORT WELSHPOOL AND DISTRICT BOWLING CLUB

The Port Welshpool and District Bowling Club is once again embarking on another season of pennant bowls in the South Gippsland Bowling Association. The Club has teams in the Tuesday pennant competition (Div.2) and the Saturday pennant competition (Div. 3).

After round 4 the Tuesday team is 2nd on the ladder and the Saturday team is 4th on their ladder. Well done girls and guys!

There have been some exciting finishes in Saturday pennant. After losing to Inverloch by 8 shots at Inverloch on the 8th October, we bounced back to beat Foster at home by 1 shot and on the 22nd we accounted for Wonthaggi away by 1 shot.

The Clubs monthly "Triples" event at home was washed out on the 19th October and so we look forward to our next "Triples" on the 16th November. The Club hosts this event each 3rd Wednesday of the month. The Club Hotel at Yarram have kindly come on board to help sponsor this day.

Just an early reminder that the Club will be hosting its annual 3 day Tournament on the 28th, 29th and 30th December 2016 and we welcome everybody.

The next game for our Tuesday team is on the 2nd November (Wed) at San Remo and the Saturday team play Phillip Island on the 12th and San Remo on the 19th, both at home (yippee no travel!). For competition fixtures/ladders you can visit the South Gippsland Bowls Association on the Web.

The Club is endeavouring to attract new members and personnel to support its facilities and enjoy the hospitality both on and off the "green".

Memberships are Full: \$80 Junior: \$45 and Social: \$25

The Club is also calling for sponsors to assist its finances in return for business exposure. Please contact Maurie Carroll for full details. Phone 0419 899 804 or email: maurie_carroll@hotmail.com

The usual Friday weekly practice – BBQ –beverages commences at 4pm at the Club which is located near the Long Jetty. We would like to see you here and make you most welcome. The Club is considering opening the social rooms at other times during the week. The Port Welshpool and District Bowling Club is fully licenced and is available for meetings etc.

Maurie Carroll – Public Relations
Ph 0419 899 804



(email received by the RTC)

Hi there, I am currently undertaking research of my descendants - Makeham / Breheny who came from Welshpool in South Gippsland. I am trying to get hold of a publication relating to the early days in Welshpool - not sure whether you can suggest a good book or put me on to someone that can help me please.

I found an old photograph, in my late Grandmother (Catherine Mary (Kit) Makeham) photo box of the Makeham / Breheny clan (suspect taken in the early 1900's) standing outside what looks like a Hotel.
Cheers Bill Uren

(for contact details please contact the RTC)

Can You Help?





Welshpool Recreation
Reserve Committee
presents

Lawn Mower Races

Saturday 19th November 2016

Arthur Sutherland Recreation Reserve

Port Welshpool Rd, Welshpool

Scrutineering – 8am
Driver Brief & Track Walk – 9.30am
Practice lap – 9.45am
Race Start – 10am

Entry Fee: \$5 per person
\$15 per family
Competitors Fee: \$20

Jumping Castle
Sumo Suits
Mini Golf
Face Painting
Balloons
Raffles

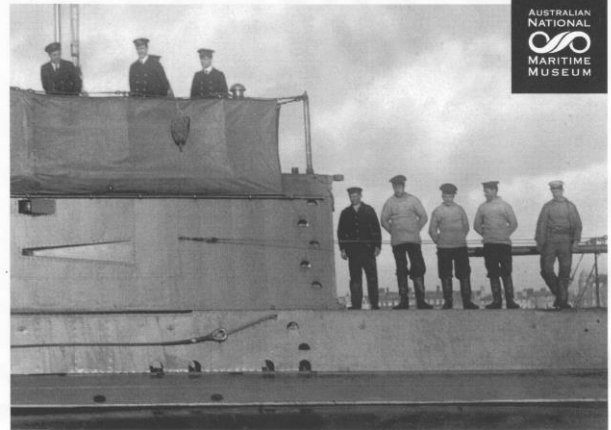
Mower & Tractor Display
Food & Drinks trackside
(Eftpos available)



Entries and Enquiries to :
welshpoolreserve@outlook.com



"Welshpool Recreation Reserve"



AUSTRALIAN
NATIONAL
MARITIME
MUSEUM

WAR AT SEA

THE NAVY IN WWI

A TRAVELLING GRAPHIC
PANEL EXHIBITION

Discover the stories and raw personal
accounts of Royal Australian Navy sailors in
this graphic panel exhibition commemorating
the centenary of WWI.

Port Welshpool Maritime
Museum.

Turnbull Street Port Welshpool.
Coming in December 2016 until
February 2017.

Ph. 5688-1220.

anmm.gov.au

www.portwelshpoolmaritimemuseum.com.au



LOOKING FOR A CONCRETER?

VISIT WWW.SGCONCRETE.COM.AU FOR YOUR
FREE ONLINE ESTIMATE

CALL MEGAN ON 0414 927 924 TO BOOK YOUR
FREE ONSITE CONSULTATION

LIKE US ON [FACEBOOK.COM/SOUTHGIPPSLANDCONCRETE](https://www.facebook.com/SOUTHGIPPSLANDCONCRETE) TO
KEEP UP TO DATE WITH OUR LATEST PROJECTS

Welshpool Supermarket

18 Main Street, Welshpool

Open 7 days a week Phone 56881452



“November Specials”

2kg Commercial Laundry Powder \$5.99

6 pk Kleenex Toilet Rolls \$2.99

Industrial Hand Towel Rolls 90m \$2.99

Green Shelled Prawn Meat 1kg \$26.99

Garlic Prawn Meat 1kg \$26.99

Business Hours

➤ Monday to Friday - 9am—5.30pm

➤ Saturday - 9am—3.00pm

➤ Sunday - 10am—3.00pm

Call in for Fresh Made Cakes, Sandwiches and Coffee

**Specializing in Local Seafood & South
Gippsland finest Steaks
Bookings highly recommended**

Hotel Hours 11.30 – 9.30 Mon – Thurs

11.30- till late Friday – Sat

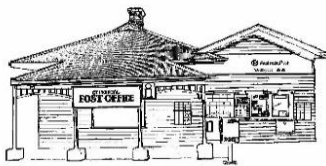
12 noon till 8.30pm Sunday

For Bookings

03 56881333

Pier Port Hotel

Waterfront Restaurant



WELSHPOOL LICENSED POST OFFICE

20 Main Street Welshpool Phone: 5688 1419

Christmas is on its way !!!.

Time for all good kids to get their Christmas lists off to Santa!!!
Dedicated Mail box for Santa located inside the Post Office.

Check out our range of Christmas cards and gift ideas.

Special “Card Only” Christmas stamps available only 65 cents
each for Australia wide delivery.



Port Welshpool & District Maritime Museum

Recently we had the occasion to use the Welshpool Hall for a very special Museum meeting. On observing the hall I would like to say what a credit the hall is to the community.

Over the years many a bride has a great memory of her reception being held in the great building and catered for by local ladies all with home cooking. We didn't have the choice of a flash reception centre, we had the "Welshy Hall" and the catering was caringly prepared by the ladies of the C.W.A.

Then there were the pictures every Saturday night. "Great Memories." There was the newsreel at the start, showing the happenings of the world. When the lights were turned on at interval, we were all eager to see as to who was in the back row with who. Parents dropped off kids and picked them up or you got a ride, and most Saturdays the hall was full. What pride we took as to what we were going to wear, as this was our big night out, and possibly our entertainment for the week.

At the Port we had our hall too, and over the years it was used for many a gathering until it burnt down due to an electrical fault. Sadly the hall was never rebuilt. While it was in full swing it was the hub of the town for gatherings, to wish a proud young man the "very best" as he prepared to go to war to defend his country. Or maybe that evening dance where every young girl hoped to meet "Mr. Right". A lot of work went into the local dance night, there was supper to organise and the floor to be just right so everyone could display their fancy footwork. Support was everything for the organisers and it seemed to come easily as a lot travelled far and wide to enjoy the local dances.

The Port Welshpool Hall at one stage was also used as a school, with grades prep and one being taught there. The higher grades two to six were taught in the old school as it became known situated at the end of Turnbull Street in the bush. This same hall was also doubled as a church, for the Sunday Service and Sunday School. The local State School held their Christmas concert in the hall. Locals enjoyed their game of cards and the friendships that came with it. Meetings for many a club was held in the Supper Room. The Mothers Clubs (as they were named, as it was the mums that had the time, as dads were the bread winners) that supported the school and organised fundraisers, for example, cake stalls on election days and no food handling certificate required.

The Tennis Club also used the hall for meetings to discuss the finance and the running of the club or maybe the town's people needed to call a Public Meeting to rally together to fight the powers that be, or for whatever they felt was important for the good of their town.

Every town had a hall or that was how it seemed, even the smallest of towns was supported with a hall, and today some still proudly stand with all their history and secrets.



Port Welshpool Hall – Burnt down 1972



Welshpool Hall



RTC Rooms for Hire

Office Hire : \$11 per hour
\$33 per day

Consulting Room : \$27.50 per day

Meeting Room Hire : \$38.50 per day

FRANCIE FEET **Mobile Foot Care**

Leongatha to Yarram

Francie Feet, foot care offers trimming, filing of toenails and light massage to feet and lower legs

Billy Goat SOAP for sensitive skin available.
Gift vouchers also available, a great gift for family & friends!!

**Don't wear your feet out.
Come along and treat yourself**

Sarah Cannon Clinic
20 Coopers Road
Foster

Call Fran:
(03) 56 881615
0427 179 887

HOME VISITS AVAILABLE



FOSTER SEAFOODS



35 Main Street, Foster
Ph: (03) 5682 2815

With catches of Inlet fish arriving within the shop on a daily basis and our vessels returning from extended trips into Bass Strait, you can be assured that the quality is second to none.

We also have an extensive list of products with very competitive prices.



Massage Therapy By Tara

Relaxation & Remedial Massage
Available Wednesday & Friday

Tara Hollier

13 Grip Rd

Toora, 3962

0438 533 446

tara.hollier@hotmail.com

The **Welshpool Rural Transaction Centre** is now on Facebook. "Like" our page to stay informed of upcoming local events and news as well as the services provided by the RTC.

"Welshpool RTC"



Bistro & Bar Meals 7 Days a Week

Main Street, Welshpool, VIC, 3966.

Drive in Bottle Shop: OPEN 7 DAYS

Contact: **PAUL**

Ph/Fax: (03) 56881209

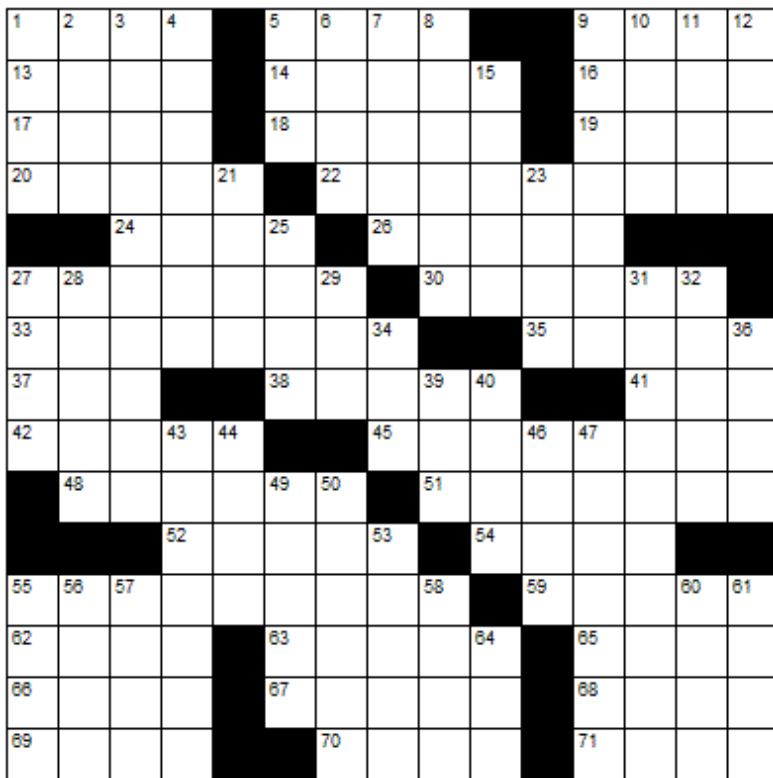
Email: welshpoolhotelmotel@gmail.com

COURTESY BUS AVAILABLE

(please call to book)



CROSSWORD



Across

- | | |
|----------------------------------|-------------------------------|
| 1. Engineering school | 30. Garden building |
| 5. Laugh | 33. A certain sports official |
| 9. Of higher order | 35. It makes dough rise |
| 13. Comply with | 37. Japanese apricot |
| 14. Redress | 38. A light informal meal |
| 16. Affirm | 41. Spy agency |
| 17. Daughter of Zeus and Demeter | 42. Serpentine |
| 18. Testicle | 45. Mobster |
| 19. Scrabble piece | 48. Detective |
| 20. Peel | 51. Employees |
| 22. Mounds | 52. Anagram of "Tutor" |
| 24. Bearing | 54. Layer |
| 26. Ancient empire | 55. Breaks |
| 27. Feeling | 59. Inhabited |

- ## Down
1. Clock sound
 2. Black, in poetry
 3. A formal event
 4. Muller's glass
 5. Crone
 6. "Smallest" particle
 7. Show respect towards
 8. Not digital
 9. Daytime performance
 10. Wicked
 11. Fee
 12. Amazes
 15. Swelling under the skin
 21. Wreaths
 23. Indistinct
 25. French for "Names"
 27. Shade trees
 28. Comportments
 29. Indian bread
 31. Germs in the blood

32. Willow
34. Henpeck
36. Sailors
39. Bird call
40. Clove hitch or figure eight
43. Tomato sauce
44. Mongol hut
46. Electrical or crossword
47. Spits
49. Bully
50. Yay!
53. Weepy
55. Provide nourishment
56. Dash
57. Unit of land
58. Stair
60. Pass the tongue over
61. Tall woody plant
64. An uncle

62. Every single one
63. Grille
65. Arab chieftain
66. Beige
67. Seraglio
68. Type of cereal grass
69. Very intense
70. Hoopla
71. Rice beer



LAST MONTHS CROSSWORD RESULT

S	C	A	B		B	A	R	E	S		A	P	S	E
P	U	R	R		A	L	E	R	T		D	O	T	S
U	R	S	A		N	E	C	R	O	P	O	L	I	S
E	L	E	G	I	Z	E		S	P	A	R	K	L	E
				G	O	A				S	E	A	L	S
V	A	C	A	T	I	O	N	E	R	S				
O	P	E	R	A		M	O	V	I	E		D	I	M
L	E	S	T		L	I	V	I	D		W	A	D	I
E	S	S			T	O	T	A	L		R	A	Z	O
					O	B	S	E	S	S	I	V	E	L
W	I	D	O	W						A	D	E		
I	M	A	G	E	R	Y		A	B	S	O	L	V	E
E	B	U	L	L	I	E	N	C	E		F	E	E	L
L	U	B	E		F	L	E	E	R		F	A	T	S
D	E	E	D		F	L	O	S	S		S	L	O	E

Sponsored by: **Welshpool Supermarket**

Entries must be received before

5th Dec, 2016

All correct entries will be put into a hat and the winner will be drawn by Supermarket staff. No correspondence will be entered into etc.

Please remember to double-check your spelling.

Remember to include your name, contact number and date on your returned entry, Thank you.

Winner of the October Crossword:

Lynn Gray



Welshpool CFA Grand Opening

Saturday 26th Nov. – 2pm

ALL WELCOME

Take a tour around the new building
and see our wonderful new facility



Welshpool Op Shop

Opening Hours

Monday – Friday : 9am – 4pm

Saturday – Sunday : 10am – 1pm

PH: 0474 375 954

New Children's Books

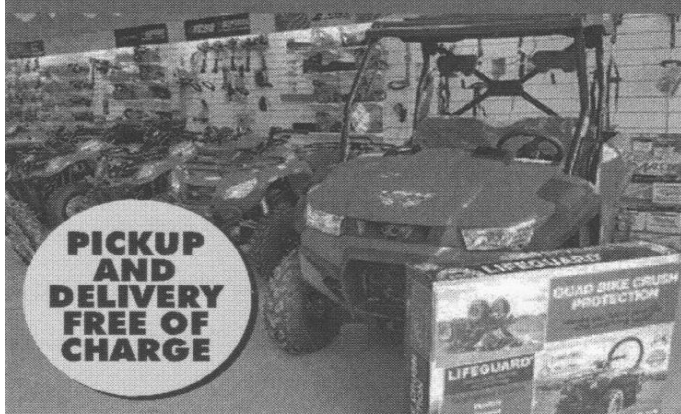
for sale

\$5 each

Call in to the RTC today



FULL MECHANICAL WORKSHOP REPAIR CENTRE



KYMCO BIKE SALES

CROSSFIRE MOTORCYCLES

LANDBOSS UXV

RIDE ON & PUSH MOWER SALES

ECHO POWER PRODUCTS

EFCO POWER PRODUCTS

**ORIGIN ENERGY HOUSEHOLD
GAS DELIVERIES**

WEL3049007

E.W. & H.P. FOWLER

**WELSHPOOL
OUTDOORS
& ORIGIN GAS SUPPLIES**

19 MAIN STREET, WELSHPOOL

P 5688 1304 F 5688 1649

welshpooloutdoors@bigpond.com

LOCAL SERVICES.....



M & C Doran
Quality is our speciality

Michael Doran

Qualified Carpenter & Joiner

16 Turnbull Street

Port Welshpool VIC 3965

Email: buildingservices@mcdoran.com.au

Ph. 03 5688 1229

Mb. 0429 038 409

Fax. 03 5688 1377

M & H Catering

(for all occasions)

Weddings • Engagements • Anniversaries • Deb Balls

Birthday Celebrations • Funeral Gatherings

Corporate Functions • Sports Functions •

Breakfasts, Lunches, Morning/Afternoon Teas

Special dietary requirements, • Waitress available

Menus provided on request

Call 5183 2454, 0429 383 037 or 0428 362 361

FRANCES GREENAWAY
COLOUR CONSULTANT

Reg. No. 2310

**PAINTER &
DECORATOR**

(03) 5688 1615

P.O. Box 17, WELSHPOOL, 3966



Styling on Stanley
Unisex Salon



46 Stanley Street,
Toora
2962.
56862328

Liz O'Neill
Proprietor

Wednesday, Thursday, Friday 9am – 5pm
Saturday by Appointment.

TOORA PHARMACY

Phone (03)56862649 or Fax (03)568262408

Pharmacist Owner: Remon Gerges

Opening Hours: **Mon-Fri:** 8:30am-6.00pm **Saturday** 9.00am-1.00pm

Free Webster packs

Free Delivery

Competitive Prices Every Day

Supply all Medical Pharmaceuticals

Diabetes Australia Agent (DAA)

ALBERTON TIMBER

& TREATMENT PLANT P/L

FOR ALL YOUR TREATED PINE NEEDS

POSTS

SAWN TIMBER

DECKING

CUSTOM TREATING

SLEEPERS

NUTS AND BOLTS

PALINGS

AND MORE

SOUTH GIPPSLAND HIGHWAY, ALBERTON, VIC, 3971

Ph (03) 5183 2437

Fax (03) 5183 2659

Email sales@albertontimber.com.au

WELSHPOOL WASTE



DISPOSAL

John & Glenyse Pyke

*Waste Disposal Bins delivered to
your property and emptied at regular intervals.*

Phone:56881221

SOUTH GIPPSLAND SEPTIC TANK CLEANING

Also Portable Toilets Hire

Call Chris Whittle

(03) 5688 1572



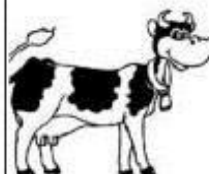
TV & DATA SYSTEMS

Digital Antennas, TV wall mounts, Data &
Computer outlets, Home Theatre, Hidden
Wiring, Networks, Offices, CCTV, Repairs,
Equipment Installations

Licensed Cable Installer

Domestic, Commerical & Industrial

Steve Mooney 0427 257 222



CATTLE PREGNANCY TESTING

10 Years Experience

Reliable and Cost Effective

Servicing Binginwarri, Welshpool,

Toora and Districts

Phone: Trent Crawford 51851248

**When I ask my husband why he doesn't sell
his old cars, he's like...**

It's not for sale...



...I'm gonna fix it one day

Helen Nicholls

PERSONAL TRAINING SERVICES

IT'S TIME TO GET FIT!

FITNESS CIRCUIT

Fridays at 9:00am

At the Ferry Terminal, Port Welshpool

\$10.00 per session

LADIES BOXING FOR FITNESS

(Bookings are Essential)

Mondays 6:30pm

Toora Hall \$10.00

PT sessions are available Tuesday, Wednesday and Thursdays

For more information please contact Helen on

(03)5688 1267

0408 550 090

ANTHONY BRAVINGTON

Cleaning & Property Maintenance Contractor

- Commercial Cleaning, Domestic Cleaning and all types of Property Maintenance
- Accommodation Contracts
- Office Building Contracts
- Retail Shops Contracts
- School Cleaning Contracts
- Builders Cleans
- All Property Maintenance etc
- Window Cleaning
- Carpet Steam Cleaning



THURSDAYS & FRIDAYS ONLY

1 bedroom house	\$70
2 bedroom house	\$90
3 bedroom house	\$120
4 bedroom house	\$150

Call Anthony for all your cleaning needs

Mobile: 0418 146 986

Email: anthonybravington@bigpond.com

TREE SERVICES GIPPSLAND

TREE LOPPING, FULLY INSURED,
PENSIONER DISCOUNTS, FREE QUOTES,
SERVICING GIPPSLAND

**ARBORIST, TRAVEL TOWER,
WOOD CHIPPER**

TREES UP TO 150FT

03 56 862 381

165 Lower Toora road Toora 3962

**OIL AND BATTERY DISTRIBUTORS
SERVICING GIPPSLAND**

Kirwan Builders

TK Construction

"for all your building needs"

Phone Michael.

m. 0428 911 900

h. 5184 1223

DBU. 20399

HIA. 813711

Welshpool & District Playgroup

Playgroup Victoria Member #34801

VENUE: WELSHPOOL KINDERGARTEN

15 MAIN STREET, WELSHPOOL

Program: Wednesdays 10.30am - 12.30pm

Run by parents and Carers for their children aged
0-5 years

Fridays: 1pm - 2.30pm

Run by Parents and Carers for their children aged
0-2 years

During School Terms

Great Facilities, Equipment and Fun

Visited fortnightly by Bushlink Toy Library

**Maternal Child Health Nurse (MCHN) visiting every
6 weeks**

All Welcome, Minimal Cost

Contact: Lisa 0409 179 235 or Emma 0409 503 710

<https://www.facebook.com/WelshpoolPlaygroup/>

more results from the 56th Spring Show – “The Romance of the Rose”

“Romance and Roses” was carried through the Floral Art section and Best Exhibit was created by Margaret Eddy. Other exhibitors were Arie Bos, Hilary Height, Janet Smythe and Rosslyn McPherson.

There were some first time exhibitors and we look forward to welcoming more at the Autumn Show, Friday 10th and Saturday 11th March – Labour Day break time.

We were very pleased to welcome the Hall Ladies Group to cater for visitors to the show and the supper room certainly buzzed with enjoyment and chatter.

The Welshpool & District Horticultural Society meets monthly, usually at the hall, and everyone is welcome to come along.

Best Exhibit in Class A – 3 Pelargoniums - Rosslyn McPherson.

Best Novice Exhibit - Mollis Azalea – G Eddy

Best Rose ‘Ian Thorpe’ – Arie Bos

Best Container – ‘Cecile Brunner’ – Margaret Stokes

Best Exhibit Class C – Collection of Pelargoniums – Rosslyn McPherson

Best Exhibit in D – Plants growing in pots – Hosta – Kate Crowl

Best Exhibit Class F – Fruit & Vegetables Royal Horticultural Society of Victoria Trophy Medal – Yvonne & Rob Williams

Best Exhibit Home Garden Produce – Bottle of sauce – Bev Tyers

Best Exhibit Novice Home Garden Produce – Chutney – Ingrid Gyles

Best Exhibit in Class H Snapshots – ‘Inside looking out’ – Fleur Wheeler

Public Choice – Romance of the Rose – Jan Gyles

Raffle winners – Y Williams, M LeBlanc,
L Rogers, M Agars, E Baud, G Rice, Faye,
J Chatfield, D Monks



Best Exhibit in Floral Art – Margaret Eddy
“Romance of the Rose”

Other trophy winners were A Bos, J Gyles, J Smythe



Aileen Wightman, floral art judge with Hilary Height club secretary, Rosslyn McPherson club president, and Mavis Wightman.



Yvonne Williams with her 1st prize peony