

Incredible Quilts.....Amazing Talent

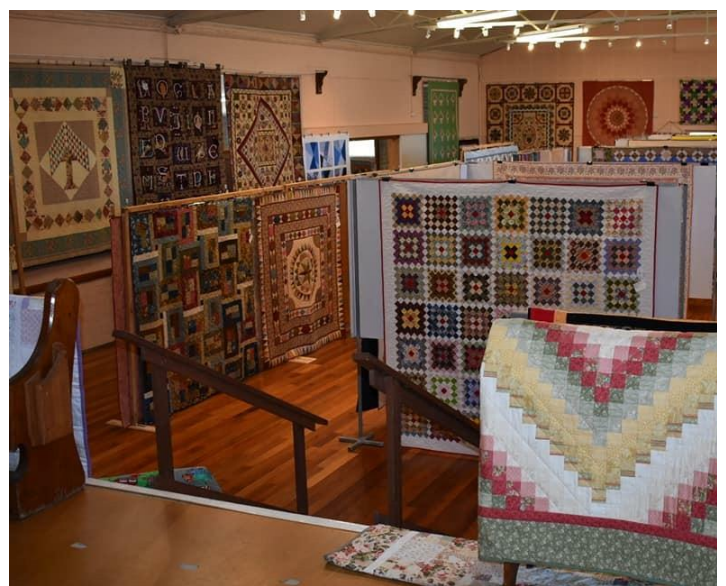
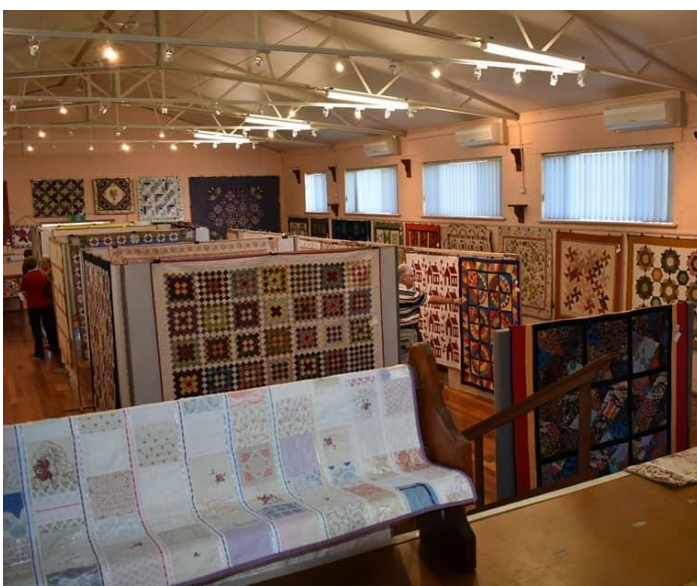
On Friday 12th and Saturday 13th October the inaugural Quilt Exhibition was held at the Welshpool Memorial Hall. Quilts from dozens of women across South Gippsland were on display for members of the public to come and view....and come they did.

The idea was to display quilts from several groups in Foster, Fish Creek and Yarram areas and we were overwhelmed with the display we were able to put on. Over 125 quilts and other items were showcased over the two days. As the call for quilts went out we started to hear from other ladies that don't necessarily belong to a formal group, that were willing to allow us to display the quilts that they have made. The result was a massive array of colour, expertise and variety. We have also gathered names of ladies who may be interested in contributing to next year's exhibition, which will indeed add even more creativity to the show.

There was something on display for everyone to admire. One of our elderly ladies had made a quilt that reflected her travels around Australia. Others had been made for grandchildren or just because they liked the design. Fabrics used were extremely diverse and had been gathered over the years and sewn into the masterpieces we saw on Friday and Saturday.

A busy team of volunteers put together delicious morning and afternoon tea as well as lunches on both days and many people stayed and chatted for hours. It was great to see people's reactions to the different quilts and many questions were asked about how the different styles were put together. We also had Lea-Anne Schirlinger and her husband Chris from Foster North displaying their weaving which initiated great discussions on the techniques used by them.

A raffle was held over the two days. First prize of a beautiful blue and white quilt made by one of our ladies and professionally quilted by Natasha Wakeling from Raw Cotton Quilting was won by Alana Cox of Foster. Second prize went to Melinda Neist of Yarram and third to Susan Pye of Port Franklin.



Disclaimer

This newsletter is an independent self-funded publication produced by staff and volunteers of the RTC and it does not reflect the opinions of the Committee members, South Gippsland Shire, or the Department of Planning and Community Development.



TRADING HOURS

MON - FRI

11.00AM - 4.00PM

- BENDIGO BANK
- CENTRELINK
- VETERANS AFFAIRS
- TAXATION INFORMATION
- MASSAGE (by appointment)
- V/LINE TICKETING OFFICE
- INTERNET ACCESS
- ROOM HIRE
- PASSPORT APPLICATIONS
- VISITING ACCOUNTANT (by appointment)
- DIABETES CLINIC (by appointment)
- TOURIST INFORMATION
- FAX, COPY & PRINT SERVICES



Centrelink Website

The Centrelink website (www.centrelink.gov.au) has been incorporated into the Department of Human Services website humanservices.gov.au. The new site is a convenient, single entry point for health, social and welfare payments and services.

Any questions regarding your payments or entitlements, this would be your first port of call.

- ***You are able to register online and access details of your account.***
- ***Find out the latest information regarding services.***
- ***Calculations can be done to work out family assistance.***
- ***Access forms and brochures.***

A touch screen computer is available at the Welshpool Rural Transaction Centre for your use.

Staff at the Centrelink agency are able to assist you with registration etc.



VLIN BUS SERVICES

**Purchase tickets at the
Rural Transaction Centre or
collect a VLINE Bus Timetable**

DIABETES CLINIC

Next Visit

Wednesday 31st October

If you would like an appointment
or have any queries, please contact

Karen on 03 5683 9780

Should anyone need to speak with the DVA
please contact:

Michael or Phil: (03) 51 266 604

or

Toll Free: 1300 551 0177

Situated at the Morwell Centrelink Office
CNR Chapel & Elgin Streets



Australian Government
Department of Veterans' Affairs

Phil Head

VETERANS' AFFAIRS NETWORK

Email: philip.head@dva.gov.au

WELSHPOOL & DISTRICT HORTICULTURAL SOCIETY Inc.
A000409K

58TH SPRING SHOW

FRIDAY, NOVEMBER 2ND 2018

1.30 to 5.00pm

SATURDAY, NOVEMBER 3RD

10.00am to 4.00pm

WELSHPOOL MEMORIAL HALL

Treasures of the Sea

OFFICIAL OPENING 2.00pm FRIDAY

ADMISSION - \$3.00 : CHILDREN - Free

PLANT STALL

REFRESHMENTS AVAILABLE

SECRETARY TO BE NOTIFIED OF ENTRIES BY
9pm WEDNESDAY 31ST October

Fran Grylls Tel. 5184 1376

10 Salmon Rd Welshpool 3966 (fax 5184 1317)



Gibson Accounting

Kieran Olree

PH: (03) 5176 2031

Fax: (03) 5174 6313

101 Hotham Street
Traralgon, Vic 3844

Email: kieran@gibsonaccounting.com.au

Kieran Olree is at the RTC every Wednesday

By appointment only - **(03) 5176 2031**

For more information and all the latest tax
updates and handy hints for tax time,
please visit Gibson's website:

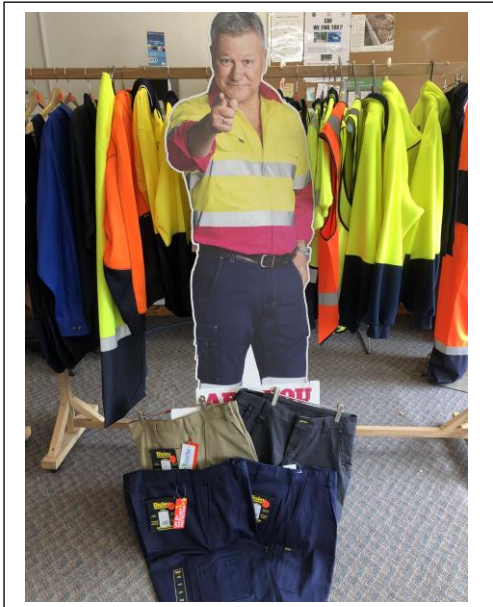
www.gibsonaccounting.com.au



In Store Now – Men's Shorts

All catalogue items can be ordered through the **RTC**

14 Main Street Welshpool or phone 5688 1051



Welshpool & District Advisory Group

A note to all local Non for Profit Organisations

The Welshpool & District Advisory Group (WDAG) have a current membership with local radio station 3MFM. If you have a community event coming up WDAG can organise **free** advertising for your club on the local radio. Call in today and speak to us about your event.



SERVING OUR COMMUNITY

Welshpool & District Advisory Group AGM

Tuesday 20th November - 7pm

Welshpool Hotel

All Welcome

22nd Annual State Cattle, Sheep & Duck Dog Championships



SATURDAY 3 - SUNDAY 4 NOVEMBER 2018

- * CATTLE, SHEEP & DUCK TRIALS
- * TOP DOG CHALLENGE
- * CITY SLICKER DOG TRIALS

BELOKA FARM AND KELPIE STUD

5845 South Gippsland Hwy, Welshpool, VIC 3986

Contact:

Paul Macphail Mob 0418 335 306 info@belokakelpies.com.au

For more info and entry form

belokakelpies.com.au

**NOVELTY
EVENTS
INCLUDING
AUSSIE
DOG IDOLS**

SPONSORED BY



Port Welshpool Fishing Club

Our new season has begun and our Best of Species Competition is off to a great start with James weighing in a 3.52kg snapper.



We have our next competition on **Saturday 3rd November**, 6pm start at the Old Ferry Terminal. Dress up (or down) for our Melbourne Cup dinner. We will be running sweeps and raffles on the night.

RSVP to Alma 5688 1152

Local community member “Byron” needs your help



Founded in 1996, Assistance Dogs Australia trains and places unique dogs with Australians in unique situations. We currently train dogs that specialise in support for people with a physical disability, autism or PTSD. As well as providing a range of services to these individuals and their families. (<https://www.assistedogs.org.au/about-us/>)

Byron's journey for an Assistance Dog started in April 2017 and up until last week was still on going. There has been a lot involved with courses, interviews and paperwork. We are very excited to announce that Byron has had a dog allocated to him, a Chocolate Labrador named Zeus. The family will be travelling to Sydney in November for 10 days intense training with Zeus before settling in to his new home with Byron.

We would like to show Assistance Dogs Australia our appreciation by raising some funds towards the cost of training an Assistance dog which is over \$35,000 over a two year period. Byron has signed to us twice a day about getting a dog ever since our interview in Sydney in March this year. Byron's love for dogs stands out and also for companionship and not to mention help with Byron's escalating anxieties.

If you would like to help out you can donate to the link below or on Assistance Dogs Australia website there is a page set up with Byron's photo on it.

For more information you can also contact Christina Doran 03 5688 1229 or 0429 881 229

<https://give.everydayhero.com/au/byron-s-journey-for-an-assistance-dogs>

Welshpool Basketball Association



We are already half way through our season and everyone is loving the new stadium floor. This year we have 5 minis and 5 juniors teams playing on a Wednesday night, and 4 intermediate and 7 seniors teams playing on a Thursday night. It's great to see so many smiling faces as we continue on towards our Grand Final being held mid-December.



Incredible Quilts.....Amazing Talentcontinued

Total profits from the two-day event has allowed us to donate \$1000 to the “Building Bridges Communities: Bridges to Prosperity” program. This program is being undertaken by The Foster & Toora Medical Centres and Mannagum Community House in Foster. It aims to break the cycle of generational poverty within our community and to help individuals to reach their true potential. This inspiring program is being launched over the next few weeks and anyone interested in learning more about it can contact Carlene Hurst at Foster Medical Centre (office@fostermedical.com.au) or Rebecca Matthews at Manna Gum Community House in Foster on 56 821 101.

The exhibition was put in place by the same team that has run “Craft the Day Away” at the Welshpool Hall in 2017 and 2018. These events have seen 100 women come together to stitch, sew, knit or crochet for the day. It allows women to congregate to chat about their crafts, share their knowledge and inspire others to have a go and make connections.

The response to this exhibition was so positive and we look forward to hosting new events in the years to come. We would like to sincerely thank our large team of volunteers with whom without we couldn't have done such an amazing exhibition. If anyone feels that they may like to contribute their quilts to next year's exhibition we would love to hear from you.

Kerryn Mattingley (kgmatt@bigpond.net.au)



LAWN MOWER RACES



**Saturday 1st
December**

**Races
start
3pm**



**Arthur Sutherland
Recreation Reserve
Port Welshpool Rd
Welshpool**



face painting
jumping castles
mini golf
& more



santa visit 5.30pm



Entry Prices : \$5 per person, \$15 Family, \$20 Competitors



Welshpool Recreation Reserve

E.W. & H.P. FOWLER

WELSHPOOL OUTDOORS & ORIGIN GAS SUPPLIES

19 MAIN STREET WELSHPOOL VIC 3966

PH: 0356881304 EMAIL: welshpooloutdoors@bigpond.com

SMALL EFFORT, BIG RESULTS!

With high quality performance and easy operation, Husqvarna lawn tractors bring versatility and performance to your outdoor work. A wide range of attachments and a built-in choice of cutting methods allow you to decide which combination best suits your garden. Ideal for efficient lawn care and various tasks around your house and land.



H TS138 LAWN TRACTOR

User-friendly lawn tractor with foot-pedal operation, side ejection cutting deck and powerful engine to tackle smaller blocks.



\$2,899

was \$3,299 **SAVE \$400**

Now also a dealer
for

Husqvarna

Call in today to view
our range

Trick or Treat!!

On **Wednesday October 31st** children from our area will be dressing up and coming around in the early evening for a "Trick or Treat"!!

Trick or Treaters will **start at 5.30pm with a free sausage sizzle** at the Rotunda in the Welshpool Park.

Kids!! Why not dress up and join in the fun visiting the neighbours. (with mum and dad's permission of course,and it's also ok to have Mum or Dad in tow !!!).



" Melbourne Cup Weekend "

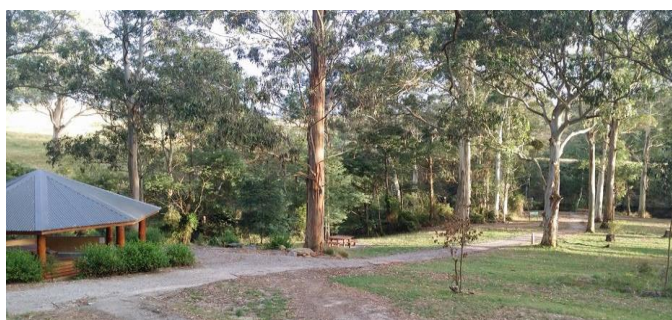
" OPEN DAY "

Sunday 4 November 2018

at the

Agnes Falls Scenic Reserve

10.30am – 4.00pm





The Pick My Project votes are in. Unfortunately the Welshpool Park and Rotunda Upgrade was not successful this time around. However throughout the Gippsland region 23 projects were successful, receiving a total of \$2,434,419 in funding. Some great project will be going ahead including "A Warmer Pool for Yarram", "Mirboo North Splash Park" and the "Pearl Park Music Festival" in Foster.

Thank you to everyone who took the time to vote and support our local project, the Welshpool and District Advisory Group will now look at other avenues for funding our local park area.

Carpet Bowls

Old Ferry Terminal, Port Welshpool

Come along for a fun afternoon of Carpet Bowls

No membership or equipment required,
everything is supplied for you.

Every Tuesday afternoon: 12.45 – 3.30pm

\$3 per session followed by tea, coffee, biscuits
and a chat. Everyone welcome!

For more information call Angela on 5686 2566
or 0412 993 316

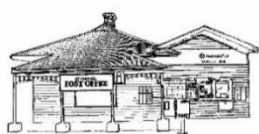
Port Welshpool Working Group



Saturday 11th November

Old Ferry Terminal, Port Welshpool

9am – 2pm



WELSHPOOL POST OFFICE

Licensees, Cath & Alan O'Neill

Ph: 5688 1419 Email: welshpoolpostal@bigpond.com



*Now in store Random Harvest - Aussie Made and
Gluten Free Gourmet Mustards, Oils, Salts, Gift
Packs and more..... Spoil a friend or why not yourself
– call in and check out the range !!!!*



Find us on
Facebook

*Christmas Cards and
Gifts in store from 1st
November !!!
Christmas Catalogue
out soon.*



PORT WELSHPOOL & DISTRICT MARITIME MUSEUM

AS we creep away from winter, the spring sun warms our creaking bones and brings everything to life. It also warns us of the summer heat that's around the corner. Thank you Mother Nature as we are fed up with the chilly winds.

Financial year at the Museum;

As we look back over the financial year for the Museum we are very pleased with our achievements. Though small in numbers, all volunteers have done a sterling job.

Our A.G.M.

In the middle of September we held our Annual General Meeting, chaired by Cr. Ray Argento. Cr Argento was very complimentary to the Committee and Members for their dedication to the museum and wished the Committee for 2018/2019 all the very best. We thank him for his valued support.

Help Please!!

The Long Jetty is taking on a very pleasing look as we watch its rebirth. With other developments taking place locally all is looking good for more visitors to the area and hopefully to the museum. Of course the museum is our focus, we would love to have more visitors as not only does this pay the bills and help with our development, but, it "Keeps History Alive." HELP is another need as it seems volunteers are as scarce as "hen's teeth" and as we all know "Many Hands make Light Work"

RSP Rocco.

With the very sad passing of Rocco, we are a man down. Rocco was a very valued member of the museum with his valued ideas, forward thinking and vision for the future. Rocco will be sadly missed, not only by us but all who he was involved with, as a valued community member.

So folks, yes this is a cry for help.

Life is busy and demanding we all know, but an hour or so at the museum can be very rewarding, talking to people about our area or maybe helping with a project.

New to the area, that's fine, it would be a great way for you to learn about the area in which you live, as I, and many others are guilty of not knowing a great deal of the interesting history of our area, where ever you live. With more help we could not only open on weekends, as this doesn't suit everyone, but we could open week days. Groups are most welcome and well catered for.

If you don't feel comfortable coming on your own, (even though you would be made most welcome) maybe you would like to come with a friend, buddy systems are just fine. Just a few hours of your time, doing whatever suits. Interested? Give us a call!

Our Committee for 2018/2019 is.....

President; Fran Grylls. 041385122

Vice President; Greg Gordon.

Secretary; Janet Taylor. 0413199776

Treasurer; Ellen Ellis. 0428277755

Assistant Treasurer; Wendy Lipianin.



Welshpool Supermarket
& Cafe

Phone 56881452



Fresh made Cakes & Slices Daily

Homemade Sausage Rolls

Ivan's Gourmet Pies

Fresh Meat, Fruit & Vegies

Hot Chickens on weekends (orders taken)

Hours : Monday to Friday : 9am - 5.00pm

Saturday : 9am – 3pm

Sunday : 10am – 3pm

FRANCIE FEET
Mobile Foot Care

Leongatha to Yarram

Francie Feet, foot care offers trimming, filing of toenails and light massage to feet and lower legs

Billy Goat SOAP for sensitive skin available.
Gift vouchers also available, a great gift for family & friends!!

**Don't wear your feet out.
Come along and treat yourself**

Sarah Cannon Clinic
20 Coopers Road
Foster

Call Fran:
(03) 56 881615
0427 179 887

HOME VISITS AVAILABLE



FOSTER SEAFOODS



35 Main Street, Foster

Ph: (03) 5682 2815

With catches of Inlet fish arriving within the shop on a daily basis and our vessels returning from extended trips into Bass Strait, you can be assured that the quality is second to none.

We also have an extensive list of products with very competitive prices.



RTC Rooms for Hire

Office Hire : \$11 per hour

\$33 per day

Consulting Room : \$27.50 per day

Meeting Room Hire : \$38.50 per day

CARPET

CLEANING



CALL PETER

0417372059



Bistro & Bar Meals Thur - Mon

Main Street, Welshpool, VIC, 3966.

Drive in Bottle Shop: OPEN 7 DAYS

Contact: PAUL

Ph/Fax: (03) 56881209

Email: welshpoolhotelmotel@gmail.com

COURTESY BUS AVAILABLE

(please call to book)



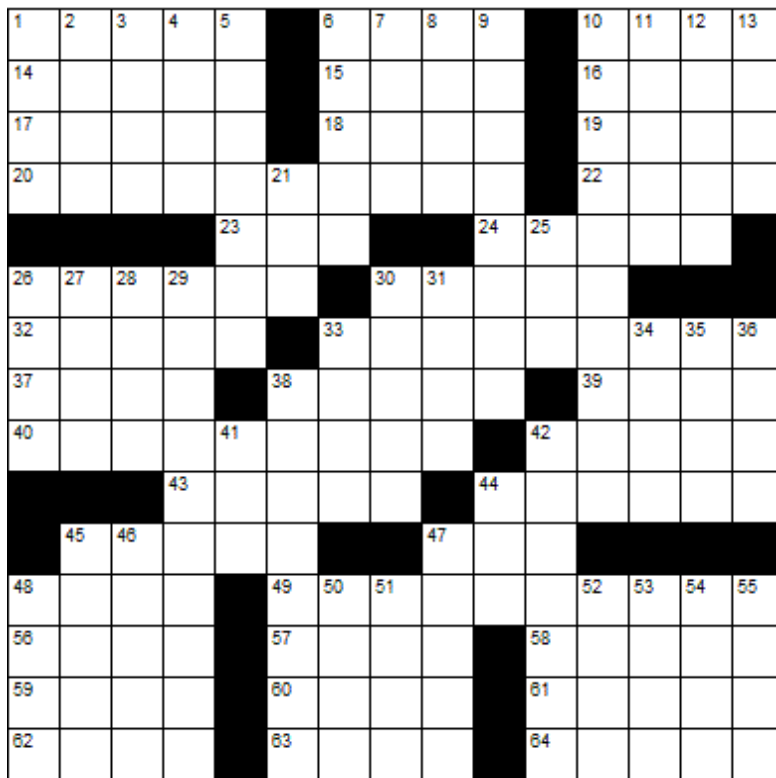
House Wine - \$3

Pot of Beer - \$4

Spirits (selected Basic) - \$5

Bar Snacks & Raffles

CROSSWORD



Down

1. Does something
2. Not this
3. Pipe
4. Weightlifters pump this
5. What we wear
6. Each and all
7. Hubs
8. Flexible mineral
9. Profligates
10. Someone who is paralyzed
11. Convex molding
12. A green fabric mixture
13. Female sheep (plural)
21. Buffoon
25. Antlered animal
26. South American weapon
27. Not odd
28. Low-fat
29. Pampering
30. Leg joints
31. French for "Names"
33. Blend
34. Disabled
35. Auspices
36. Fathers
38. Separating the notes
41. 3 in Roman numerals
42. Reasonable
44. Record (abbrev.)
45. Hawaiian veranda
46. Egg-shaped
47. Eats
48. Big party
50. Twixt
51. Cleave
52. Anagram of "Loot"
53. Murres
54. Lease
55. Being

Across

1. Loft
6. Shade trees
10. Barbershop emblem
14. Unpleasant person
15. Voice Over Internet Protocol
16. Affirm
17. Forbidden
18. Behold, in old Rome
19. Wander
20. Loud
22. "Oh my!"
23. Fodder
24. Storehouse
26. Faith
30. Peal
32. Roasters
33. Dived
37. Its symbol is Pb
38. Originates in
39. Madly in love
40. Yearly income payments
42. Shy
43. Prevaricators
44. Break time
45. Reasonable judgment
47. Lair
48. Donated
49. A mocking drawing of someone
56. Shortly
57. Ends a prayer
58. Drills
59. Nonclerical
60. Prong
61. Groin
62. Assistant
63. Probabilities
64. Gladden



LAST MONTHS CROSSWORD RESULT

P	O	L	Y	P		S	A	G	S		C	A	M	E
I	D	E	A	L		K	I	L	T		U	L	E	X
T	E	S	L	A		I	D	E	A		S	O	R	E
A	S	S	E	S		S	M	E	N	T		T	H	I
						T	A	P			U	B	O	A
C	O	R	T	E	X		C	L	A	I	M			
A	M	O	U	R		D	I	U	R	N	A	L	L	Y
S	E	A	M			F	O	R	T	Y		B	E	A
E	N	D	U	R	A	N	C	E			S	L	A	N
						L	E	V	E	E		A	M	E
						O	U	T	G	O		H	I	E
L	U	L	U			N	A	T	U	R	A	L	I	Z
I	N	T	O			I	C	O	N		R	A	D	O
E	C	R	U			A	M	O	K		E	M	E	N
S	E	A	S			N	E	T	S		D	E	S	K

Sponsored by: **Welshpool Supermarket**

Entries must be received before

19th November, 2018

All correct entries will be put into a hat and the winner will be drawn by Supermarket staff. No correspondence will be entered into etc.

Please remember to double-check your spelling.

Remember to include your name, contact number and date on your returned entry, Thank you.

Winner of the September Crossword:

Lynn Gray



Welshpool Golf Club

With the weather being very kind to us and the course looking its best thanks to the hard working small band of workers who attend the Thursday working bees every week.

The highlight of the past month was our Annual Tournament held over Friday 12th to the Sunday 14th October.

Friday was the ladies 4BBB event along with a multiplier sub event. The A Grade winners were- Faye LePage and Irene Holm with a score of 41 points. B Grade went to Jeanette Swann and Rae Knee with 40 points. The multiplier winners were- Maxine Eabrey and Trish Owen with 52 points. Nearest the pins for the day went to- 6th Sev Piasente and the 2nd shot 17th to Jeanette Swann.

On Saturday the singles mens event was held and the scratch winner with a very good score of 79 was Brian MacPherson. A Grade handicap winner to David Lucas with net 63 (17) and the B Grade handicap went to Lionel Pope with 33 points. The straightest drive to Paul Delaney and the longest to Nathan Lucas. Nearest the pins went to- 6th Andrew Brown, 8th Lionel Pope and the 12th to Clarke Barned.

Sunday was a two person medley ambrose event that saw the combination of Paul Delaney and Lionel Pope win the scratch event with a score of 71. A Grade went to Ian Gibson and Greg Jones with net 65 ¼ (6 ¾), B Grade went to Chris Bailey and Adam McKay with net 65 ¼ (11 ¾). The nearest the pins went to- 3rd and 6th Ian Gibson, 12th Greg Jones, 15th Russell Barwick and the 17th to Lionel Pope. The straightest drive to Tom Welsh for the men and for the ladies to Jen Delaney.

Another highlight for the month was the Mick Platt stableford event. The comprehensive winner was Graham English with 40 points, Balls down the line to Alan Hayes 35 and Russell Barwick with 33. Nearest the pins to- 6th Graham English, 8th Russell Barwick, 12th Ian Gibson and the 15th to Paul Delaney.

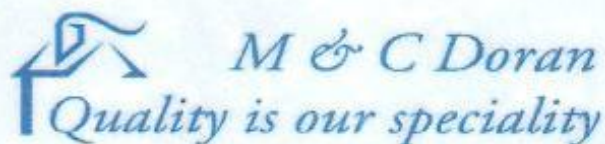
Before some of our trees were cut down- One was heard to say- I'm hitting the woods just great but I'm having a terrible time getting out of them.

One for Russ B- "being a left handed golfer is a big advantage. No one knows enough about your swing to mess you up with advice"

New rule for the start of next year- Dropping a ball is now from knee height no matter how tall you are.



LOCAL SERVICES.....



Michael Doran
Qualified Carpenter & Joiner

16 Turnbull Street
Port Welshpool VIC 3965
Email: buildingservices@mcdoran.com.au
Ph. 03 5688 1229
Mb. 0429 038 409
Fax. 03 5688 1377



TRUCKS * TRACTORS * MACHINERY * PASSENGER & FOOD TRANSPORT VEHICLES
Ian Dubignon **M. 0448 761 642**

FRANCES GREENAWAY
COLOUR CONSULTANT

Reg. No. 2310

PAINTER & DECORATOR

(03) 5688 1615

P.O. Box 17, WELSHPOOL, 3966



Styling on Stanley
Unisex Salon



Liz O'Neill
Proprietor

Wednesday, Thursday, Friday 9am – 5pm
and Saturday

46 Stanley Street,
Toora
2962.
56862328

Toora & District
Community Bank® Branch,
Foster branch and
Welshpool agency



FOR ALL YOUR TREATED PINE NEEDS

POSTS SAWN TIMBER DECKING CUSTOM TREATING
SLEEPERS NUTS AND BOLTS PALINGS AND MORE

SOUTH GIPPSLAND HIGHWAY, ALBERTON, VIC, 3971
Ph (03) 5183 2437 Fax (03) 5183 2659 Email sales@albertontimber.com.au

CONCRETER



SOUTH GIPPSLAND CONCRETE
ALL THINGS CONCRETE
ON-SITE TIMBER MILLING

0400 840 729

WWW.SGCONCRETE.COM.AU

TV & DATA SYSTEMS

Digital Antennas, TV wall mounts, Data & Computer outlets, Home Theatre, Hidden Wiring, Networks, Offices, CCTV, Repairs, Equipment Installations

Licensed Cable Installer

Domestic, Commerical & Industrial

Steve Mooney 0427 257 222

SOUTH GIPPSLAND SEPTIC TANK CLEANING

Also Portable Toilets Hire

Call Chris Whittle

(03) 5688 1572



Welshpool Op Shop

Opening Hours

Monday – Friday : 9am – 4pm

Saturday – Sunday : 10am – 1pm

PH: 0474 375 954

Helen Nicholls

PERSONAL TRAINING SERVICES

IT'S TIME TO GET FIT!

FITNESS CIRCUIT

Fridays at 9:00am

At Agnes

\$10.00 per session

LADIES BOXING FOR FITNESS

(Bookings are Essential)

Mondays 6:30pm – 6 week block - \$50

at Toora Hall

METAPWR

Wednesday 6.30pm – 6 week block - \$50

At the Old Ferry Terminal, Port Welshpool

Casual spots \$13

PT sessions are available Wednesdays and Thursdays

For more information please contact Helen on

0408 550 090

DANNY O'BRIEN MP

Member for Gippsland South

Your strong local voice

54B Cunningsham St Sale VIC
36A Blair St Leongatha VIC
PO Box 9250 Sale VIC 3853
Ph: 5144 1987

www.dannyobrienmp.com.au

for Regional Victoria



WELSHPOOL WASTE DISPOSAL

- Permanent bins & clean up skips
 - Commercial, household or farm waste
 - Cardboard recycling
 - Weekly, fortnightly, monthly
 - 1.5M3 OR 3M3 BINS
 - Locally owned & operated
- CALL OR EMAIL FOR A QUOTE
PH: 03 56881221
www.welshpoolwaste.com.au
welshpoolwaste@bigpond.com

*"Your local name
in the waste game"*

TREE SERVICES GIPPSLAND

TREE LOPPING, FULLY INSURED,
PENSIONER DISCOUNTS, FREE QUOTES,
SERVICING GIPPSLAND

ARBORIST, TRAVEL TOWER,
WOOD CHIPPER

TREES UP TO 150FT

03 56 862 381

165 Lower Toora road Toora 3962

OIL AND BATTERY DISTRIBUTORS
SERVICING GIPPSLAND



ANTHONY BRAVINGTON

Cleaning & Property Maintenance Contractor

- Commercial Cleaning, Domestic Cleaning and all types of Property Maintenance
- Accommodation Contracts
- Office Building Contracts
- Retail Shops Contracts
- School Cleaning Contracts
- Builders Cleans
- All Property Maintenance etc
- Window Cleaning
- Carpet Steam Cleaning



THURSDAYS & FRIDAYS ONLY

1 bedroom house	\$70
2 bedroom house	\$90
3 bedroom house	\$120
4 bedroom house	\$150

Call Anthony for all your cleaning needs

Mobile: 0418 146 986

Email: anthonybravington@bigpond.com

Kirwan Builders

TK Construction

"for all your building needs"

Phone Michael.
m. 0428 911 900
h. 5184 1223

DBU. 20399
HIA. 813711



Butterfly Passenger Service

Privately Owned
Car & Driver Hire

In Sth. Gippsland

8am - 6pm

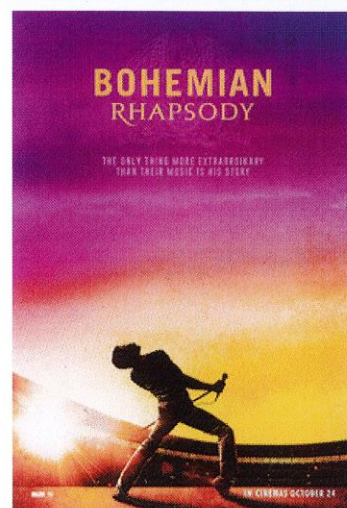
Ph: 0411 334 236

butterflypassengerservice@gmail.com



MOVIE NIGHT

**Fundraiser to help raise
funds for**



Byron is on a wait list with **ASSISTANCE DOGS AUSTRALIA** for an autism assistance dog to help with his rising anxieties, every day living and become his companion for life.

Join us for a fun night out to see the opening of the
BOHEMIAN RHAPSODY
ON
THURSDAY 1st NOVEMBER.

Including a delicious dinner at Chao Phraya Thai Restaurant in Leongatha
and bus transport return from Yanakie, Foster, Toora and Welspool.
Also a raffle on the night and merchandise for sale.

TIMES TO BE CONFIRMED CLOSER TO THE DATE.

TICKETS \$50.00

**To book please contact: Wendy 0435 439 125 or
Christina 0429 881 229**

