



## We're Still Here for You!

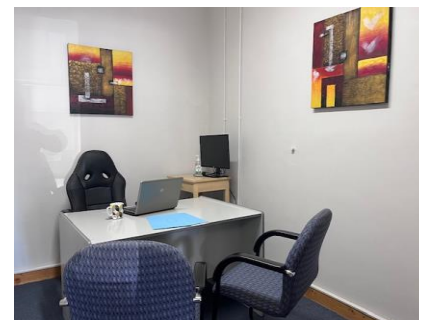
Continuing to Serve Our Community – With Heart and Purpose

While it's certainly disappointing to say goodbye to our Bendigo Bank agency on **October 6th**, we want to remind everyone that **our Rural Transaction Centre remains open and committed to serving our community** in many valuable ways.

Here's what we still proudly offer:

- ✅ **Centrelink Agency** – We're here to help you access vital services and support.
- 📖 **Community Library** – Open during RTC hours and staffed by our friendly librarian every Wednesday afternoon.
- 🏢 **Office Space for Rent** – Affordable and flexible options for local professionals or small businesses.
- ☕ **Meeting Area** – A welcoming space in the library with tea and coffee facilities - perfect for catch-ups or quiet work.
- 🏠 **Multi-use Back Room for Hire** – Great for workshops, community groups, or creative projects.
- 👕 **Bisley Work Wear** – Still available at fantastic prices!
- 🍵 **Local Pottery & Crafts** – Beautiful handmade items from talented local makers, available to browse and buy.

We may be losing one service, but we're not going anywhere. Our team is here to help and support you. Let's keep making this a strong, connected community, together.  
Pop in and say hello!



### Disclaimer

This newsletter is an independent self-funded publication produced by staff and volunteers of the RTC and it does not reflect the opinions of the Committee members, South Gippsland Shire, or the Department of Planning and Community Development.



**TRADING HOURS**  
**MON, WED, THU, & FRI**  
**10.00AM - 3.00PM**  
**PHONE 5688 1087**

- WELSHPOOL COMMUNITY LIBRARY
- BENDIGO BANK AGENCY
- SERVICES AUSTRALIA AGENCY
- V/LINE TICKETING OFFICE
- ROOM HIRE AVAILABLE
- COPY & PRINT SERVICES
- BISLEY WORKWEAR

#### Other services by appointment only

- Gibson Accounting – 5176 2031



**VLINE  
 BUS  
 SERVICES**

**Purchase tickets at the  
 Rural Transaction Centre or  
 collect a VLINE Bus Timetable**

## Agent

### At a Services Australia Agent you can:

- **USE OUR COMPUTER** to access [my.gov.au](http://my.gov.au) and other government services and information
- **USE OUR PHONE** to access the agency's self service options or to speak with us
- **ACCESS FREE WI-FI 24/7** to connect to government services – no password required
- **USE OUR EQUIPMENT** to upload, print and photocopy documents
- **GET YOUR IDENTITY DOCUMENTS CERTIFIED**

### Agents can:

- help you to set up and access digital services
- help you find information online about payments and services
- arrange referrals to specialist services.

### Agents can't:

- access your records
- make decisions about or change your payments or debts
- issue a Medicare card or Health Care Card
- do customer interviews
- contact the agency to get information about your payments or entitlements, without your permission.

Agents aren't Services Australia staff.

### Your local Agent is:

Welshpool & District Advisory Group Inc

**Address:**  
 14 Main St, WELSHPOOL

10am-3pm Monday,  
 Wednesday, Thursday &  
 Friday's

### Self service

You can use myGov to access your Centrelink, Medicare and Child Support online accounts. Go to [my.gov.au](http://my.gov.au)

You can also access our services through the Express Plus mobile apps. For more information go to [servicesaustralia.gov.au/selfservice](http://servicesaustralia.gov.au/selfservice)

### Online Services Support Hotline

myGov Helpdesk 132 307 select option 1  
 Centrelink Helpdesk 132 307 select option 2

### Centrelink phone self service

Phone self service 136 240  
 Report income and update your obligation requirements 133 276

### For help in other languages

Centrelink 131 202  
 Medicare and Child Support 131 450

### How to contact us

ABSTUDY	Freecall™ 1800 132 317
Assistance for Isolated Children	132 318
BasicsCard balance enquiry	Freecall™ 1800 057 111
BasicsCard and	
Income Management	Freecall™ 1800 132 594
Centrelink debt recovery	Freecall™ 1800 076 072
Centrelink Indigenous	
Call Centre	Freecall™ 1800 136 380
Child Support	131 272
Complaints and feedback	Freecall™ 1800 132 468
Disability, sickness and carers	132 717
Families	136 150
Farmers and their partners	132 316
Financial Information Service	132 300
Grandparent Advisers	Freecall™ 1800 245 965
Indigenous debt recovery	Freecall™ 1800 138 193
Job seekers	132 850
Low Income Health Care Card	132 490
Medicare	132 011
Medicare Aboriginal and Torres Strait Islander	
Access Line	Freecall™ 1800 556 955
National Redress Scheme	Freecall™ 1800 737 377
Older Australians	132 300
Youth and students	132 490
TTY enquiries	Freecall™ 1800 810 586

TTY is only for people who are deaf or have a hearing or speech impairment. A TTY phone is required to use this service.



[servicesaustralia.gov.au](http://servicesaustralia.gov.au)

**Working from home and need a change of scenery? Office Space available to rent at Welshpool Rural Transaction Centre.**

Mondays, Thursdays, and Fridays.

Contact us on **5688 1087** for more information.



Gibson Accounting

Kieran Olree

PH: (03) 5176 2031

Fax: (03) 5174 6313

101 Hotham Street  
 Traralgon, Vic 3844

Email: [kieran@gibsonaccounting.com.au](mailto:kieran@gibsonaccounting.com.au)

Kieran Olree is at the RTC every Wednesday

By appointment only - **(03) 5176 2031**

For more information and all the latest tax updates and handy hints for tax time, please visit Gibson's website:

**[www.gibsonaccounting.com.au](http://www.gibsonaccounting.com.au)**





# FATHER'S DAY

## WOOD RAFFLE

**1ST PRIZE**  
**LOAD OF WOOD**  
& **WELSHPOOL**  
**HOTEL PACK**

**2ND PRIZE**  
**LOAD OF WOOD**

**3RD PRIZE**  
**LOAD OF WOOD**



**\$1 PER TICKET**

**RAFFLE DRAWN**  
**FRIDAY**

**\$1 PER**  
**TICKET**

**5TH SEPTEMBER**  
**ALL TICKETS DUE BACK**  
**MONDAY 1st SEPTEMBER**

**LOCAL DELIVERY ONLY**

**TICKETS AVAILABLE AT THE RTC**

*Welshpool Hotel*  
VIC 3966

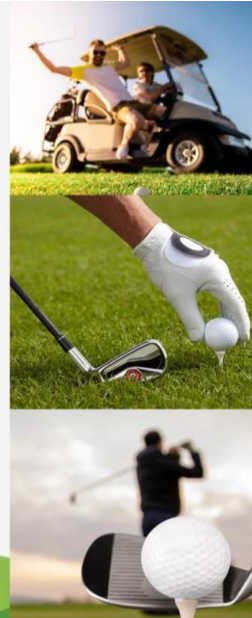
**SUPPORTING**  
**THE**  
**WELSHPOOL**  
**GOLF CLUB**

During the months of June & July our  
Friday night bar raffles raised funds  
for our local Welshpool Golf club!

**WE RAISED**

**\$572**

Get behind this local club & enjoy a  
day out on the green!



LIONS  
CHRISTMAS  
CAKES  
AVAILABLE  
NOW AT  
THE RTC

\$20ea

## Anchor Park, Welshpool

We're so excited to share that the new walls at the Anchor Park rotunda are up, and they look amazing! Not only do they add a fresh new look, but they'll also bring some welcome shelter to our much-loved rotunda, which our community worked hard for.

Many thanks to Glenn and the building maintenance team at South Gippsland Shire Council for making it happen.

And the good news doesn't stop there — next up, BBQ's! These were installed last week and are a massive addition to our town park. We were so lucky to secure a grant from the Community Bank Foster & Toora Grants Programme to secure these, and we hope they will be put to good use!





A variety of Bisley wear available to purchase. Orders can be placed if we don't have your size.

Call in to view our range  
**14 Main Street Welshpool**



**Welshpool Agency (available until  
October 6<sup>th</sup>, 2025)**

**14 Main Street Welshpool**

**Monday, Wednesday, Thursday & Friday**

**10am to 3pm**

**Planning a burn off?**

**Check. Apply. Notify.**  
Go to [firepermits.vic.gov.au](https://firepermits.vic.gov.au)  
or call 1800 668 511



### **Myli – My Community Library**

Join today at the Rural Transaction Centre and have access to a variety of books, audio books, DVD's and more. If it's not on the shelf it can be ordered in. Open Monday, Wednesday, Thursday and Friday 10am to 3pm. A Librarian also attends every Wednesday 12pm to 2pm for any assistance required.



**QUIET OFFICE  
SPACE  
AVAILABLE**  
at the  
**RTC**



**AVAILABLE NOW ON  
MONDAYS, THURSDAYS  
& FRIDAYS**

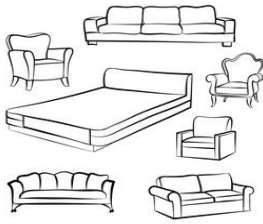


**Perfect for work, study,  
or meetings**

**ENQUIRE WITHIN OR CALL  
5688 1087**



# Welshpool Op Shop & Nursery



Monday to Friday  
Ph: 0417 367 629  
10am – 3pm (Winter Hours)  
Saturday 10am – 2pm



Call in and find yourself a bargain!  
Plenty of clothes available.  
Men's, ladies and children's clothes  
of all sizes.  
Fill a shopping bag for just \$5!!



## ☀ Volunteers Wanted! ☀

Welshpool Op Shop would love for some friendly new faces to join our volunteer team. Whether you can give a few hours a week or a whole day, your time makes a huge difference.

👉 What you'll be doing:

- Helping customers find hidden treasures
- Sorting and displaying donated goods
- Sharing a smile and a chat with the community



No experience needed – just bring your enthusiasm and a willingness to help.

☀ Perks of volunteering:

- Meet new people and make friends
- Support a great cause right here in our community
- Be part of a fun, friendly team

📍 Pop in to the shop for a chat or call us on **56861087** to find out more.

Your time = someone else's treasure. ❤



# Welshpool Basketball Association



We are excited to introduce our committee for the 2025 season.



**President** – Jade Roberts

**Vice President** – Robby Lewis

**Secretary** – Narelle Lagergren

**Treasurer** – Lisa Fitzgerald

**Ordinary Members** – Sinead Hilder, Stacey Fowler, Michael Roberts and Pete Lagergren

We would like to extend a huge thank you to Madelaine and Tina for their incredible work, dedication and love for the club over the years. You have both left big shoes to fill and we are grateful for everything you have done.



Registrations for our Spring 2025 season are now open!

26 Main Street, Welshpool  
Law Firm & Gallery Gift Store

Opening 1 September 2025



**Ellison-Whyte** Law

<https://ellisonwhytelaw.com.au>



## About the artist

Rosie Lyons is a multidisciplinary artist and printmaker residing in Foster. With a strong foundation in design, textiles, and printmaking, her diverse practice encompasses linocut, etching, painting, pyrography, cyanotype, and textile art.

Discover Rosie Lyons Studio Gallery & Gift Store – where nature's quiet poetry and artful craftsmanship converge in a sunlit space nestled among South Gippsland's bushland and coastal breezes.

Join us at our opening celebration, and experience the magic of carved woodblocks, printed treasures, and flame-lit stories, all designed to delight and connect.

Stay up to date with the latest events at the gallery below:



OPENING HOURS - Wednesday & Saturday  
10am to 2pm

Other times by appointment



## Our Services

We offer services as follows:

1. Wills and Estate Planning
2. Powers of Attorney
3. Deceased Estate administration
4. Family Law
5. SMSF and Family/Unit Trust set up
6. Conveyancing, subdivisions, small business leasing, sale and purchase



**Book an consult below:**



## About Us

Sue Ellison-Whyte is the dedicated Principal and lawyer at Ellison-Whyte Law on Mornington Peninsula and South Gippsland, known for client-centered, innovative legal service delivery in areas like conveyancing, estate planning, family and small business law.

**Why should you choose us**



We offer progressive client-centered legal services in person and online, that are flexible, efficient, with cost certainty.

Our service is client-centered, we put our client at the heart of every transaction.

**Contact Us**

OPENING HOURS - Monday & Tuesday  
9am to 3pm

+61 3 5908 3732

[admin@ellisonwhytelaw.com.au](mailto:admin@ellisonwhytelaw.com.au)



## Corner Inlet Stingrays Junior Football Club

ALL IN FOR THE FINALS!

All three of Stingrays junior teams have worked incredibly hard this season, and guess what? They ALL made it to the finals!

This is a remarkable achievement and a true testament to the dedication, effort, and team spirit shown by our players, coaches, families, and loyal supporters. Week in and week out, our young Stingrays have shown what it means to play with heart. Under 10's, 12's and 14's all took to the oval at Toora on Sunday to take on MDU. Unfortunately for all teams, they couldn't quite get the win meaning that was the end of the final's series for the u14's. But luckily for the 10's and 12's, they get another shot at glory taking on Tarwin and Newborough at Foster this Sunday 24<sup>th</sup> August. It's sure to be a great day of junior footy and we would love to see as much support there as possible!

Follow Corner Inlet Stingrays on social media to stay up to date with fixtures, match reports, and all the action from the day. This club is powered by passionate local families and community spirit, and now's the perfect time to show your support.

Let's keep the energy high and junior footy alive, see you at the finals!

A couple Welshpool juniors have earned recognition with invitations to attend the Central Gippsland Junior Football League (CGJFL) vote count on Monday night.

### **Congratulations to Slade Hilder and Abbey Lees (u14's)**

Also representing the Under 12s are Ryan Bacon and Tyson Wilson, while in the Under 14s category, Koby Jenkins, and Lachlan Knee have also received invitations.

This acknowledgement highlights the talent and hard work of these young athletes, and the community wishes them all the best for the evening.





## PORT WELSHPOOL & DISTRICT MARITIME MUSEUM

The Museum doors are closed for our winter break while some housekeeping gets caught up with. Even so the valued volunteers have been hard at it catching up on those little jobs that keep slipping through the cracks. One of those such jobs has been a piece of an RAAF aircraft that has been well kept undercover after it was handed to the Museum some time ago after being hauled up in a fisherman's net. More detailed information is yet to be discovered. And to achieve this, the piece has been handed over to Sale RAAF; so now this precious bit of cargo can go under further examination and investigate so its identity can be revealed. The big question is, is this piece connected to the plane accident mentioned.

During October 29<sup>th</sup>, 1991, an Australian Boeing 707 plane was recovered off Woodside, after crashing into Bass Strait. At the time of the accident weather conditions were reported to be good, but later due to rough seas together with strong tides and the plane being badly smashed on impact, pieces of the plane were discovered some areas well away from the impact. The big question is, is this one of the missing pieces? On board the aircraft that departed from Richmond N.S.W. were five crew members on a training flight to Avalon. While cruising at an altitude of 5,000 feet along the coast, the aircraft lost height and plunged in the sea. The wreckage was found about one km off Woodside Beach and sadly all five occupants were killed. **As always with these accidents an inquiry is investigated and the article as follows is a report for this accident. Probable cause as reported:** The Board of Inquiry concluded that the instructor devised a demonstration of asymmetric flight that was 'inherently dangerous and that was certain to lead to a sudden departure from controlled flight' and that he did not appreciate this. The Board noted, there were deficiencies in the acquisition and documentation of 707 operational knowledge within the RAAF, combined with the absence of effective mechanisms to prevent the erosion of operational knowledge at a time when large numbers of pilots were resigning from the air force. There was no official 707 QFI conversion course and associated syllabus and no adequate QFI instructors' manual. There were deficiencies in the documented procedures and limitations pertaining to asymmetric flight in the 707 and a lack of fidelity in the RAAF 707 simulator in the flight regime in which the accident occurred, which, assuming such a requirement existed, required actual practise in flight. 'The captain acted with the best of intentions but without sufficient professional knowledge or understanding of the consequences of the situation in which he placed the aircraft,' the Board said.

So..... now we wait to get answers for the findings from Sale R.A.A.F. on this precious piece of history. Is it, or isn't it? This is the question????





## SNAP SEND SOLVE

-SNAP - Have you spotted an issue around town?

Snap to help have it fixed.

-SEND – Send a report on the spot.

-SOLVE – We'll get it to the right place so it can be solved.

DOWNLOAD THE APP TODAY

### How can we help?

For information and assistance:

- 9 Smith Street, Leongatha VIC 3953
- 5662 9200
- [council@southgippsland.vic.gov.au](mailto:council@southgippsland.vic.gov.au)
- [www.southgippsland.vic.gov.au](http://www.southgippsland.vic.gov.au)
- Facebook: southgippslandshirecouncil



**Snap  
Send  
Solve**

Did you know that you can report something that needs fixing via Snap, Send, Solve?

Simply download the app from the App Store or Google Play and start reporting

## Annual 3-Day Tournament

### Port Welshpool & District Bowling Club

Community Bank  
Toora & Foster

**Bendigo Bank**

Port Welshpool Long Jetty

**2025**

**Sunday 28<sup>th</sup> December - 3 Bowl Triples.**

**Monday 29<sup>th</sup> December - Fours.**  
(Dinner available on Monday)

**Tuesday 30<sup>th</sup> December - 3 Bowl Triples.**

**\$10 PER PLAYER. 10:00 AM START.**

**LUNCH SANDWICHES - MADE TO ORDER**

**RSVP: Errol Gregory 0417133271**

**[portwelshpoolbc@gmail.com](mailto:portwelshpoolbc@gmail.com)**

## Segway Navimow

Available in store now

**E.W. & H.P. FOWLER**  
**WELSHPOOL OUTDOORS**  
**& ORIGIN GAS SUPPLIES**

19 MAIN STREET  
WELSHPOOL VIC 3966

PH: 0356881304

[welshpooloutdoors@bigpond.com](mailto:welshpooloutdoors@bigpond.com)



### Smart App Control

In the Navimow app, you can find everything you need, from interactive guidance and personalized settings to status update and service extension.



Set and Adjust  
Mowing Area



Check Real-time  
Mower Status



Adjust Mowing  
Schedule



Set an Anti-theft  
Alarm



OTA Updates



LATROBE ORCHESTRA  
&  
STRINGZ COSTERO  
*present*

# THE MAGNIFICENT MUSIC MATINEE!

SUP & SIP TO CINEMATIC MUSIC, CLASSICAL GREATS AND  
GIPPSLAND COMPOSED WORKS

September 6TH 2.30pm 2025

*BYO Food & Drink!*



Leongatha Memorial Hall, Leongatha

ADULTS \$15  
CHILDREN \$5

TRYBOOKING link:  
<https://www.trybooking.com/DCTFJ>  
or CASH@door. Doors open 2pm!

## South Gippsland Go Girls Program 2025



### Women Helping Women



Do you want to feel empowered?  
Do you want to take control of your future?  
Together, with your new friends, let's discover your dreams

You can be part of a fully funded, women's only program based in  
Bass Coast/South Gippsland area

All meals and transport are provided  
In a safe environment, explore your future and plan ahead  
Women of all ages are welcome

Information Session: Friday, August 29th 2025

Wonthaggi Library at 10:00AM & 1:30PM  
Murray St, Wonthaggi VIC 3995

To find out more or to register for the program call or email:  
Michelle Maughan on 0401 993 541 | [michelle@gogirls.org.au](mailto:michelle@gogirls.org.au)

## PROM COUNTRY FARMERS MARKET

3rd SATURDAY EVERY MONTH  
8 am -12 noon



20 Sep 2025

## PROM COUNTRY FARMERS MARKET

Farm fresh produce and more. Venue: Foster War Memorial  
Arts Centre Gardens (In the hall if wet). 3rd Saturday of each  
month, 8am - 12pm

## THE AUSTRALIAN PINK TRIBUTE SHOW

# HOT pink!

SATURDAY 20TH SEPTEMBER  
9PM  
TICKETS \$35PP

BUY TICKETS ONLINE  
OR AT  
THE WELSHPOOL HOTEL





**JBN  
CAR CLEANING**



0428683533

**service list**

Exterior Clean

Interior Clean

Basic to Ultimate Options

Sedans, Wagons, SUV, 4WD.

Utes

Gift Vouchers Available

Price List Available

Servicing Yarram to Fish Creek

Friday, Saturday or Sunday

**Welshpool Supermarket & Café**

Pies, pasties, sandwiches & salads  
home-made slices & muffins.  
Hot & cold drinks & more

**TRADING HOURS**

Monday – Friday 7am to 3:30pm

Saturday 9am to 2pm

CLOSED SUNDAY



**Driving  
Miss Daisy®**  
We're There For You

**Alice Filon**

Independent Franchise Owner  
Gippsland

**For Enquiries & Bookings  
Call: 0492 122 024**

E: [gippsland@drivingmissdaisy.com.au](mailto:gippsland@drivingmissdaisy.com.au)



[www.drivingmissdaisy.com.au](http://www.drivingmissdaisy.com.au)

Companion driving for: Medical appointments,  
Hairdresser, Shopping, Scenic drives, Airport/rail/bus  
transfer, Pets to vet, School & children's activities

**Danny O'BRIEN MP**  
Member for Gippsland South

54B Cunninghame St, Sale VIC 3853

03 5144 1987

[danny.obrien@parliament.vic.gov.au](mailto:danny.obrien@parliament.vic.gov.au)

[www.dannyobrienmp.com.au](http://www.dannyobrienmp.com.au)

*Working for Gippsland South*

[f](#) [t](#) [i](#) /dannyobrienmp

**THE NATIONALS** for Regional Victoria



✨ **ADVERTISE YOUR BUSINESS WITH US** ✨

📣 Reach locals & visitors right here!

✓ Affordable advertising rates

✓ Great community exposure

✓ Support a good cause while promoting  
your business

Call us on 5688 1087

**WELSHPOOL CEMETERY TRUST**

**CHAIRPERSON**

**DAVID GRILLS**

**0428 858 961**

**FOSTER SEAFOODS**



35 Main Street, Foster

Ph: (03) 5682 2815

With catches of Inlet fish arriving within the shop on a  
daily basis and our vessels returning from extended trips  
into Bass Strait, you can be assured that the quality is  
second to none.

We also have an extensive list of products with very  
competitive prices.

**Port Welshpool and District Bowling Club**

Contact Angela Tisler 0448440153

[portwelshpoolbc@gmail.com](mailto:portwelshpoolbc@gmail.com)

22 Bowling Club Rd

(Right of the Long Jetty along the foreshore)

Social and Barefoot Bowls Fridays during the

bowls season (Oct - end of April) from

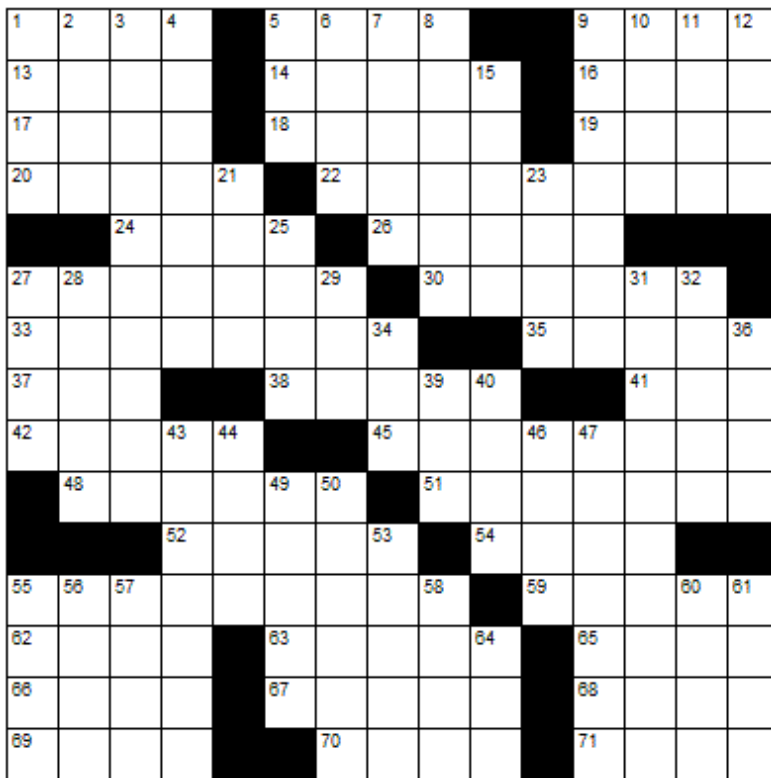
4:30pm.

Bowls provided.

Bar service available. BBQ & Salad dinners  
available most weeks at 6:30pm

**NEW MEMBERS AND BOWLERS MOST  
WELCOME**

# CROSSWORD



## Down

1. Soft drink
2. Not under
3. Rancor
4. Capture
5. Weep
6. Court order
7. Fruit of the oak tree
8. Country
9. Calamity
10. Hindu princess
11. Chills and fever
12. Catholic church service
15. Artillery burst
21. Diva's solo
23. Paddles
25. Spanish lady
27. Border
28. Clairvoyants
29. Toss
31. Gain favor
32. Murmured
34. Uncooked
36. Extinct flightless bird
39. Feline
40. Be cognizant of
43. Soon
44. A few
46. Sketch
47. Angered
49. A special loved one
50. Results
53. Compacted
55. Mats of grass
56. Urine component
57. Legume
58. Clairvoyant
60. Unwanted email
61. French for "Head"
64. South southeast

## Across

1. Center
5. An aquatic bird
9. Streetcar
13. Baking appliance
14. Killer whales
16. Indian music
17. Not more
18. Flora and fauna
19. Rectum
20. Turf
22. Stories covering three novels
24. An aromatic ointment
26. Exploded stars
27. Estrogenic hormone
30. Scandinavian
33. Behaviour
35. Church council
37. G
38. Confused
41. Slime
42. Sea eagles
45. Roamed
48. Walk with long steps
51. Twister
52. Make improvements
54. Verruca
55. Sub-tenant contracts
59. Midsection
62. Chocolate cookie
63. Graphic symbols
65. Stare
66. University administrator
67. Affirmatives
68. French for "State"
69. Warbled
70. Arid
71. Greek territorial unit



*Winning entry will receive a free coffee and cake from the Welshpool Café & Supermarket*



## LAST MONTHS CROSSWORD RESULT

T	O	U	R		E	R	A	S	E		K	A	P	H
U	G	L	Y		S	A	L	T	S		A	B	L	E
L	I	C	E	N	T	I	O	U	S		O	D	O	R
E	V	E		O	R	D	E	R		F	L	U	T	E
S	E	R	I	O	U	S		D	A	R	I	C		
			A	S	S		S	I	L	E	N	T	L	Y
T	H	E	M	E		C	L	E	A	T		I	I	I
W	O	M	B		D	O	U	S	E		P	O	M	P
I	M	P		T	A	U	N	T		C	A	N	O	E
T	E	A	C	H	I	N	G		C	O	P			
			T	R	U	S	T		L	O	V	A	B	L
A	C	H	E	S		D	E	A	V	E		R	I	G
G	A	I	N		B	O	R	D	E	R	L	I	N	E
A	D	Z	E		O	W	N	E	R		I	D	E	S
R	E	E	L		A	N	E	N	T		V	E	R	T

Sponsored by: **Welshpool Supermarket**

Entries must be received before  
15<sup>th</sup> Sept

All correct entries will be put into a hat and the winner will be drawn by Supermarket staff. No correspondence will be entered into etc.

Please remember to double-check your spelling.

**Remember to include your name, contact number and date on your returned entry, Thank you.**

**Winner of the July Crossword:**

NO WINNER





## Carpet Bowls

Old Ferry Terminal, Port Welshpool  
Come along for a fun afternoon of  
Carpet Bowls

No membership  
or equipment required,  
everything is supplied for you.

Every Tuesday afternoon:

1pm sharp

\$5 per session plus a small plate for  
afternoon tea.

Everyone welcome!

Contact Alma 0427310599

or Lyn 0409995891



## WELSHPOOL BASKETBALL

REGISTRATIONS OPEN

SEASON STARTS SEPTEMBER 3RD

SCAN AND REGISTER NOW!



**Looking for Exercise?**

**Easy, Casual, Friendly**

**Welshpool Memorial Hall**

**Wednesdays 6:30-8:30pm**

**All Equipment Supplied, All Levels Welcome**

**\$2 / player / time. Ask JJ on 0400 114 905**

***for more details***



# LOCAL SERVICES.....

## How can we help?

For information and assistance:

- 9 Smith Street, Leongatha VIC 3953
- 5662 9200
- council@southgippsland.vic.gov.au
- www.southgippsland.vic.gov.au
- Facebook: southgippslandshirecouncil



**Snap  
Send  
Solve**

Did you know that you can report something that needs fixing via Snap, Send, Solve?

Simply download the app from the App Store or Google Play and start reporting



**AAC MOBILE AUTO AIR CONDITIONING**

Maintenance & Repairs to...

TRUCKS • TRACTORS • MACHINERY • PASSENGER & FOOD TRANSPORT VEHICLES

Ian Dubignon **M. 0448 761 642**

[aacautoair.com.au](http://aacautoair.com.au)

## WELSHPOOL CRANES

0428 171 666

Mobile Crane  
Dogmen  
Piggers

**Gary Mason**

[info@gmmason.com.au](mailto:info@gmmason.com.au)



THROCKMORTON SERVICES PTY LTD  
**BUILDING MAINTENANCE  
& CARPENTRY**

Email: [throckmorton@bigpond.com](mailto:throckmorton@bigpond.com)

Mb: 0417 582 918

ABN 72 875 167 020



John Hoy  
Trade qualified Farrier  
(25 years experience)

0447 229 390

**ALBERTON TIMBER**  
& TREATMENT PLANT P/L

FOR ALL YOUR TREATED PINE NEEDS

POSTS    SAWN TIMBER    DECKING    CUSTOM TREATING

SLEEPERS    NUTS AND BOLTS    PALINGS    AND MORE

SOUTH GIPPSLAND HIGHWAY, ALBERTON, VIC, 3971

Ph (03) 5183 2437

Fax (03) 5183 2659

Email [sales@albertontimber.com.au](mailto:sales@albertontimber.com.au)



## CONCRETER

Delivering Quality Concrete Services for  
Residential, Commercial & Farm Upgrades.

CALL KANE  
TODAY FOR A  
FREE ON-SITE  
CONSULTATION

**5613 2013 | 0400 840 729**

E: [admin@sgconcrete.com.au](mailto:admin@sgconcrete.com.au)

W: [www.sgconcrete.com.au](http://www.sgconcrete.com.au)

## TV DATA PHONE

Digital Antennas, Masts, Repairs. TV Wall Mounts, Speakers, Home Theatre & Hidden Wiring. WIFI. Cameras & Security Systems. Phone & Computer Outlets. Networks. Satellite Dish and Receivers, VAST and StarLink. Mobile B.B. Antennas. Test and Tagging.

Licensed Cable & Security Installer  
Domestic, Commercial & Industrial  
**Steve Mooney 0427 257 222**

✨ ADVERTISE YOUR BUSINESS WITH US ✨

📢 Reach locals & visitors right here!

✅ Affordable advertising rates

✅ Great community exposure

✅ Support a good cause while promoting your business

Kirwan Builders

## TK Construction

"for all your building needs"

TK Construction - Michael Kirwan

6565 South Gippsland Highway HEDLEY VIC 3967

P: 03 5184 1223 | M: 0428 911 900

E: [kirwanbuilders@gmail.com](mailto:kirwanbuilders@gmail.com)

HIA MEMBERSHIP: 813 711 | DB-U: 20399 | A.B.N: 40 896 158 242



## Gatt's Tile Roof Restorations

We cater for everything roofing

- Pressure washing      -Roof painting
- Repointing tile roofs      -Install gutter guard
- Replace broken tiles      -Repair leaks.

-External high pressure washing of:

- \*Houses      \*Buildings
- \*Driveways      \*Gutters



Port Welshpool workshop

Morwell workshop

Please phone 0434 725 536

All work is done by tradesmen

Fully insured and WorkSafe approved.



## Port Welshpool & District Museum



*The building that houses the collection was designed and built by John Avery in 1881 for W.B.M. Smith. Being the first large home in the village, it became the unofficial community centre, conducting dances, weddings, church services and even a wine salon.*

### ADMISSION CHARGES

<b>Adults</b>	<b>\$5</b>
<b>Pensioner</b>	<b>\$4</b>
<b>Student</b>	<b>\$2</b>
<b>Family</b>	<b>\$10</b>

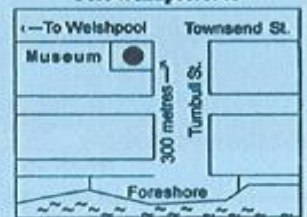
Cnr. Townsend & Turnbull Streets  
Port Welshpool 3965

Opening Hours 12.30pm - 3.30pm  
Sat, Sun, Public Holidays  
and by Appointment.

or call the Museum Secretary  
Janet Taylor 0413 199 776

Website - [ptwelshpoolmuseum.wixsite.com/pw-museum](http://ptwelshpoolmuseum.wixsite.com/pw-museum)

Group visits are welcomed.



### ANTHONY BRAVINGTON

#### Cleaning & Property Maintenance Contractor

- Commercial Cleaning, Domestic Cleaning and all types of Property Maintenance
- Accommodation Contracts
- Office Building Contracts
- Retail Shops Contracts
- School Cleaning Contracts
- Builders Cleans
- All Property Maintenance etc
- Window Cleaning
- Carpet Steam Cleaning



#### THURSDAYS & FRIDAYS ONLY

1 bedroom house	\$70
2 bedroom house	\$90
3 bedroom house	\$120
4 bedroom house	\$150

Call Anthony for all your cleaning needs

**Mobile: 0418 146 986**

**Email: [bravtecleaning@gmail.com](mailto:bravtecleaning@gmail.com)**

## RON LEACH

### CALF BUYING

Mondays & Thursdays

Top Prices

Also buying friesland heifers  
& other small beef stock

**Call 0429 881 464**

# Oven Baked Sausages with Potatoes, Vegetable and Gravy!



## Ingredients

- 700g baby potatoes, halved
- 3 carrots, peeled and cut into 5cm pieces
- 2 red onions, each cut into 8 wedges
- 2 garlic cloves, minced
- 2 tbsp olive oil
- 2 tsp dried thyme
- 1 tsp dried oregano
- Salt and pepper
- 8 – 10 sausages (500-700g)
- Oil spray (optional)
- 30g melted butter, unsalted
- 2 1/2 tbsp flour (plain / all purpose)
- 500 ml beef broth (or chicken)
- Fresh thyme, for garnish (optional)

## Instructions

1. Preheat oven to 200C/390F (standard) or 180C/350F (fan / convection).
2. Place Vegetable ingredients in a large bowl. Toss well to coat.
3. Add sausages and toss briefly.
4. Transfer into roasting pan. Pan should be of a size so the vegetables are stacked about 2 deep – see photos and video. Rearrange sausages so they are on top.

## Gravy

1. In the same bowl used for the vegetables, add butter and flour. Whisk.
2. Add a bit of beef broth and whisk, then whisk in remaining broth. (Don't worry if you end up with some floating butter bits)
3. Pour down the side of the pan (don't pour over the sausages or veggies).
4. Optional: Spray sausages with oil – browns slightly better (especially lean sausages).

## Baking

1. Bake 25 minutes. Turn sausages. Spray again with oil (optional) then bake for a further 25 minutes or until sausages are browned and potatoes are soft.
2. Serve Sausages and Vegetables with Gravy on top, garnished with fresh thyme leaves if desired. (See notes for Gravy thickness adjustment)

## The Month Of September

BIRTH STONE



SAPPHIRE

BIRTH FLOWER



ASTER

STAR SIGNS



VIRGO & LIBRA

## Personality

September borns are known for being meticulous and never make a move without considering the consequences. They pay close attention to the details which gives them a competitive advantage, aiming close to perfection, their favourite destination.

## Did you know...?

- The Romans believed that the month of September was looked after by the god of the fire and forge – Vulcan. Therefore, they expected fires, earthquakes and volcanic eruptions in this month.
- September is the only month with the same number of letters in its name as the number of the month: it is the ninth month and has nine letters.
- In the UK, September 26 is the most common birthday for people born in the last 20 years.

## Special Days



**06 SEPTEMBER**  
National  
Read a Book Day



**13 SEPTEMBER**  
Roald Dahl  
Day



**20 SEPTEMBER**  
National  
Doodle Day



**21 SEPTEMBER**  
International  
Day of Peace

# SPRING

# IS IN THE AIR!

	3		2				1	7
8		2			5	6	3	4
	5				4	2		
	2	6						
	1	3	7			8		
7		8			6		2	9
	8	7		5			4	
2				9		7		1
	9	5				3	8	