

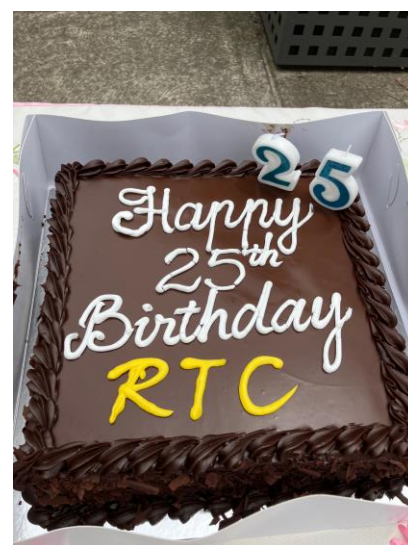


## We turned 25!

On Friday 6<sup>th</sup> December the Welshpool and District Advisory Group celebrated their 25<sup>th</sup> Birthday in front of the RTC with a BBQ. The celebration was enjoyed by many local residents and the Welshpool Primary School children and Teachers.

Ed Fowler who is the long-standing President of the Welshpool and District Advisory group acknowledged the unique community asset of the RTC highlighting the fact that we were the first Rural Transaction Centre in Victoria and one of the few still in operation. This is a great achievement for the Welshpool community to maintain vital services in the town.

We wish to thank Marge Arnup from the Promontory District Finance Group who supported us on our special day along with everyone who helped us reach this milestone.



### Disclaimer

This newsletter is an independent self-funded publication produced by staff and volunteers of the RTC and it does not reflect the opinions of the Committee members, South Gippsland Shire, or the Department of Planning and Community Development.



**TRADING HOURS**  
**MON, WED, THU, & FRI**  
**10.00AM - 3.00PM**  
**PHONE 5688 1087**

- WELSHPOOL COMMUNITY LIBRARY
- BENDIGO BANK AGENCY
- SERVICES AUSTRALIA AGENCY
- V/LINE TICKETING OFFICE
- ROOM HIRE AVAILABLE
- COPY & PRINT SERVICES
- BISLEY WORKWEAR

**Other services by appointment only**

- Gibson Accounting – 5176 2031



**VLINE  
 BUS  
 SERVICES**

**Purchase tickets at the  
 Rural Transaction Centre or  
 collect a VLINE Bus Timetable**

# Agent

**At a Services Australia Agent you can:**

- **USE OUR COMPUTER** to access [my.gov.au](http://my.gov.au) and other government services and information
- **USE OUR PHONE** to access the agency's self service options or to speak with us
- **ACCESS FREE WI-FI 24/7** to connect to government services – no password required
- **USE OUR EQUIPMENT** to upload, print and photocopy documents
- **GET YOUR IDENTITY DOCUMENTS CERTIFIED**

**Agents can:**

- help you to set up and access digital services
- help you find information online about payments and services
- arrange referrals to specialist services.

**Agents can't:**

- access your records
- make decisions about or change your payments or debts
- issue a Medicare card or Health Care Card
- do customer interviews
- contact the agency to get information about your payments or entitlements, without your permission.

Agents aren't Services Australia staff.

**Your local Agent is:**

Welshpool & District Advisory Group Inc  
 Address:  
 14 Main St, WELSHPOOL

10am-3pm Monday,  
 Wednesday, Thursday &  
 Friday's

**Self service**

You can use myGov to access your Centrelink, Medicare and Child Support online accounts. Go to [my.gov.au](http://my.gov.au)

You can also access our services through the Express Plus mobile apps. For more information go to [servicesaustralia.gov.au/selfservice](http://servicesaustralia.gov.au/selfservice)

**Online Services Support Hotline**

myGov Helpdesk 132 307 select option 1  
 Centrelink Helpdesk 132 307 select option 2

**Centrelink phone self service**

Phone self service 136 240  
 Report income and update your obligation requirements 133 276

**For help in other languages**

Centrelink 131 202  
 Medicare and Child Support 131 450

**How to contact us**

ABSTUDY	Freecall™ 1800 132 317
Assistance for Isolated Children	132 318
BasicsCard balance enquiry	Freecall™ 1800 057 111
BasicsCard and Income Management	Freecall™ 1800 132 594
Centrelink debt recovery	Freecall™ 1800 076 072
Centrelink Indigenous Call Centre	Freecall™ 1800 136 380
Child Support	131 272
Complaints and feedback	Freecall™ 1800 132 468
Disability, sickness and carers	132 717
Families	136 150
Farmers and their partners	132 316
Financial Information Service	132 300
Grandparent Advisers	Freecall™ 1800 245 965
Indigenous debt recovery	Freecall™ 1800 138 193
Job seekers	132 850
Low Income Health Care Card	132 490
Medicare	132 011
Medicare Aboriginal and Torres Strait Islander Access Line	Freecall™ 1800 556 955
National Redress Scheme	Freecall™ 1800 737 377
Older Australians	132 300
Youth and students	132 490
TTY enquiries	Freecall™ 1800 810 586

TTY is only for people who are deaf or have a hearing or speech impairment. A TTY phone is required to use this service.



Services Australia

[servicesaustralia.gov.au](http://servicesaustralia.gov.au)

Working from home and need a change of scenery? Office Space available to rent at Welshpool Rural Transaction Centre.

Mondays, Thursdays, and Fridays.

Contact us on **5688 1087** for more information.



Gibson Accounting

Kieran Olree

PH: (03) 5176 2031

Fax: (03) 5174 6313

101 Hotham Street  
 Traralgon, Vic 3844

Email: [kieran@gibsonaccounting.com.au](mailto:kieran@gibsonaccounting.com.au)

Kieran Olree is at the RTC every Wednesday

By appointment only - **(03) 5176 2031**

For more information and all the latest tax updates and handy hints for tax time, please visit Gibson's website:

**[www.gibsonaccounting.com.au](http://www.gibsonaccounting.com.au)**



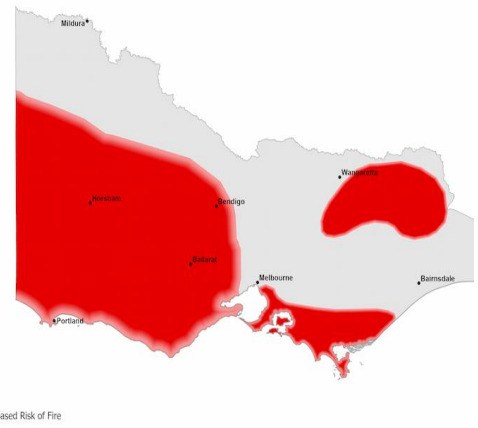
**FOREST FIRE MANAGEMENT VICTORIA**

Victorians are being urged to prepare for an increase in fire activity across large parts of the state this summer.

The Seasonal Bushfire Outlook for Summer gives a picture of the likelihood of fire over the summer months, at both a state and national level. This year's outlook – released today – predicts higher potential for fire in the west and northeast of the state, southwest Gippsland, and the Mornington Peninsula.

In the southwest, a lack of rain in the past 18 months has left a substantial amount of dead and dry plant material within forests, making it easier for fires to start and spread.

**Seasonal Bushfire Outlook Summer 2024**



*South Gippsland Shire Council News*

**The Great Southern Rail Trail**

**New and improved website**

Explore Australia's most southern mainland rail line with the fresh new Great Southern Rail Trail website.

The platform allows users to map out their journey and plan ahead for a scenic walking or riding adventure along the Trail, which spans an impressive 130 kilometres between Nyora and Yarram. The route can be undertaken in full or in easier bite-sized portions.

Explore the distance and elevation between the towns, find your closest water station, learn about the region's history and choose from a variety of access points to the Trail.

The site also gives users the opportunity to delve into the character and charm of each of the Trail's passing towns.

If an adventure along the Great Southern Rail Trail is on your summer holiday to-do list, be sure to head over the new website to get the most out of your upcoming journey.

What are you waiting for? Head to [www.gstrt.com.au](http://www.gstrt.com.au) today!

The new website has been delivered by South Gippsland Shire Council in partnership with Wellington Shire Council.

**SOUTH GIPPSLAND SHIRE COUNCIL**  
Closure: Grand Ridge Road

Drainage works associated with landslip repairs will be taking place on Grand Ridge Road, Trade from Monday 9 December to Friday 13 December.

The closure will take effect between Hollins Road and Canavans Road.

If you are using this road, please detour via Canavans Road or Ferndale Road.

For updates of road hazards and closures, please visit:  
[www.southgippsland.vic.gov.au/roadhazards](http://www.southgippsland.vic.gov.au/roadhazards)

**COUNCIL MEETINGS**

Wednesday 11 December 2.00pm (Council Chambers, Leongatha)

Dates are also listed on Council's website at: [www.southgippsland.vic.gov.au/meeting-dates](http://www.southgippsland.vic.gov.au/meeting-dates)

To watch the 'open' part of the meeting live or when it suits you, visit:  
[www.southgippsland.vic.gov.au/live](http://www.southgippsland.vic.gov.au/live)

**EMPLOYMENT OPPORTUNITIES**

Looking for a new job? We might have the perfect position for you! Check out our current vacant positions here:

[www.southgippsland.vic.gov.au/vacantpositions](http://www.southgippsland.vic.gov.au/vacantpositions)

**16 DAYS OF ACTIVISM: WALK AGAINST FAMILY VIOLENCE**

Raise awareness of gender equity and family violence prevention.

Wear orange and join us on Wednesday 4 December at 12.30pm. The walk will start at the front of Memorial Hall in Leongatha.

You can also head to the Hall before or after the walk for our BigRespect Photo Pop-up.

More information about 16 Days of Activism can be found at:  
[www.16daysgippsland.com.au](http://www.16daysgippsland.com.au)

**REQUEST FOR TENDERS**

Council is seeking submissions from qualified companies/applicants for the following:

**RFT/376 – Mirboo North Early Learning Centre Concept Design**

Tenders close 2.00pm AEDT on Tuesday 10 December 2024.

**RFT/419 – Fish Creek Streetscape**

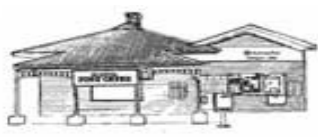
Tenders close 2.00pm AEDT on Tuesday 17 December 2024.

**RFT/423 – Korumburra Commercial Street – H Pedestrian Link**

Tenders close 2.00pm AEDT on Tuesday 21 January 2024.

Documentation is available from Council's e-Tendering Portal  
[www.southgippsland.vic.gov.au/tenders](http://www.southgippsland.vic.gov.au/tenders)

**CONTACT US**  
9 Smith Street, Leongatha  
15 Little Commercial Street, Korumburra  
03 5662 9200  
[www.southgippsland.vic.gov.au](http://www.southgippsland.vic.gov.au)



**WELSHPOOL POST OFFICE**  
20 Main Street Welshpool Phone: 5688 1419  
Email: [welshpoolpostal@bigpond.com](mailto:welshpoolpostal@bigpond.com)

Merry Christmas to all and many thanks for your support throughout a rather challenging year. May we have a much better year next year, and it is great to see most flood impacted residents have now returned to their homes.

*All the very best for 2025!!!!*



Find us on **Facebook**



A variety of Bisley wear available to purchase. Orders can be placed if we don't have your size.

Call in to view our range  
**14 Main Street Welshpool**

We would like to wish all of our loyal customers and friends a very Merry Christmas and Best Wishes for 2025. Thank you all for your ongoing support at the Welshpool agency this year.



**Welshpool Agency**

**14 Main Street Welshpool**

**Monday, Wednesday, Thursday & Friday**

**10am to 3pm**

**PH: 5688 1087**



myli.org.au  
1800 44 6954

## FESTIVE SEASON—CHANGES



Deliveries will temporarily cease during the festive season.

Staffed Library hours fall on Public Holidays - Christmas Day and New Years Day, so no holds will be processed.

Borrowing from in house collection is still possible during RTC opening.

Holds will be available again from Wed Jan 8.

For more information, please visit our website: [myli.au/fsh2425](http://myli.au/fsh2425)



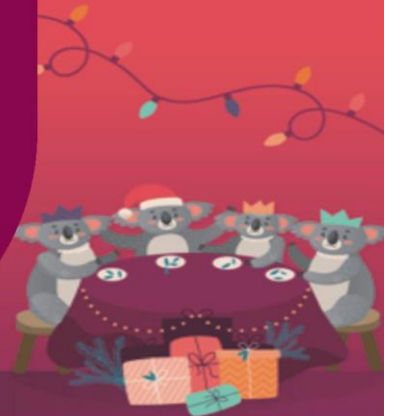
## Share in the merry

From silent nights to loud Christmas lunches, may your festive season be a special one.

During the festive season our branch will close on Wednesday 25 December, and reopen Friday 27 December.

**From the Community Bank Welshpool team and Board.**

 Welshpool Agency 5688 1087



# Welshpool Op Shop & Nursery

Monday to Friday

Ph: 0417 367 629

10am – 4pm

Saturday 10am – 2pm



Call in and find yourself a bargain.  
Plenty of clothes available.  
Men's, ladies and children's clothes  
of all sizes. Fill a shopping bag for  
just \$7!!



Lions Christmas cakes and puddings are available at the Transaction Centre and Op Shop. Support our local Lions by purchasing a delicious cake or pudding.

1.5kg Christmas Cake \$20.00ea

1kg Christmas Cake \$16.00ea

900g Christmas Puddings \$16.00ea

Mini Christmas Cakes \$2.00ea

Gluten Free Option available \$10.00ea



## SUMMER SALE!

### Clothing Items

only

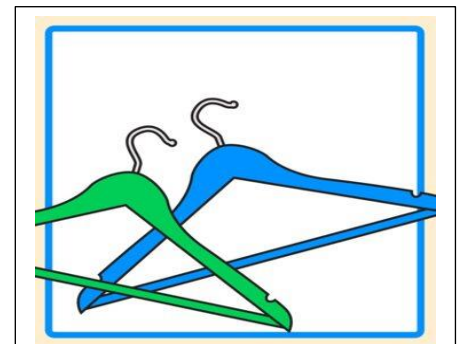
\$1ea

**MERRY CHRISTMAS TO ALL OF OUR  
COMMUNITY, CUSTOMERS AND MANY  
FRIENDS.**

After a very testing start to 2024 with the flood damage that we encountered at the Op Shop, we would like to thank you all for a wonderful year. Thank you to our volunteers, helpers, friends and for the amazing donations we have received this year. Hope you all enjoy this Christmas and here's to another successful year ahead!



**Welshpool Op Shop** would love some donations of coat hangers. We are very grateful for the huge donations of clothing being made, but we are now starting to run very low on coat hangers. These would be hugely appreciated.



# Sea Days Festival

The Seadays Festival returns on Sat Jan 4<sup>th</sup> and Sun Jan 5<sup>th</sup> at the Old Ferry Terminal at Port Welshpool.

The ever popular "Come Try Fishing" will see our local fishing experts on hand to show children (5yrs to 15yrs) the basics of fishing. Each Child receives a free fishing rod at the conclusion of each session. Session times are 10-00am and 2-00pm each day. Book via the website please to avoid disappointment as only 15 spots are available for each session. A \$2-00 booking fee for each child applies to help cover costs.

The Black Snake Productions are back again as well with their cute and cuddly critters for all to see.

The marine touch tanks give everyone the chance to see some of the marine life found in Corner Inlet, along with microscopes set up for an even closer look.

Other educational exhibits will be from Victorian Fishing Authority, Prom Coast Eco-Link, Southerly 10 (Star of the South) and the latest in E-Bike/Rail Trail/Sea Kayak developments.

Welshpool Horticultural Society, MiLi Foster and Summer by the Sea (DECCA) will have a variety of children's activities to stimulate those young minds.

These are just some of the activities and attractions at Seadays 2025, for full details, check out our website for all the latest on [seadaysfestival.com.au](http://seadaysfestival.com.au).

Yarram Lions will have their BBQ trailer operating, and the Port Welshpool Woking Group will have drinks and snacks available. Admission is still only \$5-00 per adult, children 15 years and under are free.

The Port Welshpool Working Group would like to thank the Community Bank, Toora Foster Welshpool for their sponsorship of this attraction.

**Don't forget our Summer Indoor Market on Sunday, 12<sup>th</sup> January 2025**  
**8-30 am to 2-00 pm.**

Market stall enquiries to Alma; 0427310599.



**SeaDays Festival**  
**Port Welshpool**

*Celebrating the Corner Inlet Environment*

**Jan 4<sup>th</sup> & 5<sup>th</sup>**  
**2025**

**'Come Try Fishing'**  
(prior registration via website required)

**Black Snake Productions**  
- interactive animal display

**Marine Touch Tanks'**  
- Hands on environmental activities

**Children's Activities**

**...and MUCH more!**

Community Bank  
Toora, Foster and  
Welshpool

Bendigo Bank

SeaDays Port Welshpool  
[www.seadaysfestival.com.au](http://www.seadaysfestival.com.au)

WEBSITE

Star of the South

## Promontory Produce & Craft Market Inc.

MARKET BOOKINGS TO  
P.O. BOX 180, FOSTER, 3960

MARKET ENQUIRIES 0439 033 960

*The Biggest and Best Craft  
Markets in Gippsland*

*200 Stalls around  
the oval at*

**FOSTER SHOWGROUNDS**  
**2024-2025**

**SUNDAY, NOVEMBER 3rd**

**SUNDAY, DECEMBER 8th**

**SUNDAY, DECEMBER 29th**  
(New Year's Weekend)

**SUNDAY, JANUARY 26th**  
(Australia Day weekend)

**SUNDAY, MARCH 9th**  
(Labour Day weekend)

**SUNDAY, APRIL 20th**  
(Easter Sunday)

8am - 1.00pm

Market Entry: \$2 adult cash, children free



No dogs allowed

# Sea Days Festival at The Port Welshpool & District Maritime Museum

Saturday 4<sup>th</sup> and Sunday 5<sup>th</sup> January 2025  
Museum will be open from 10am – 4pm

Come along and visit the newly renovated Museum and soak up the wealth of history of the fishing industry and the very interesting history of a Port as it was. The ever-popular Devonshire Teas will be on sale.

## Guest Speakers

### **Saturday at 11am: John Wooley**

John will entertain you with history and stories of the oil and gas industry from its beginning in Corner Inlet and Bass Strait.

### **Saturday at 1:30pm: Local Historian and Author Cheryl Glowrey**

Cheryl will speak on the intriguing history of the development of Wilsons Promontory becoming a national park and Port Welshpool's involvement.

Both these guest speakers have given their time in supporting the museum and to share the historic stories of this interesting area.

This is something not to be missed! You will not be disappointed.



**Christmas Carols at Binginwarri will be held on Thursday 19<sup>th</sup> of December commencing at 7:30pm in the Binginwarri Hall. Please bring a plate of supper to share and a donation towards the National Council of Churches in Australia Christmas bowl appeal.**

## Welshpool Recreation Reserve

WOW ...WHAT A DAY!! On Saturday 14<sup>th</sup> December, Welshpool was greeted with sunshine, smiles and plenty of action at the Recreation Reserve with 34 “mowers” in attendance along with their riders who had travelled from all over the countryside – both local and interstate, to join in the races as well as the great activities of the day. We would like to extend a huge ***thank you*** to all the crew from AROLMRA (Australian Ride on Lawn Mower Racing Association) for making the trip and for providing plenty of excitement on the track across the day.... as well as our appreciation to our major sponsors ***Mason Logistics, Welshpool Cranes, the Community Bank Toora & Foster*** plus ***the South Gippsland Shire Council*** for their support in the run up to the races. ***Thank you*** also to our trophy sponsors and those businesses who provided our fantastic and varied raffle prizes. Please know that without your generous and ongoing support days like this wouldn't happen and is very much appreciated.

Thank you to everyone who came along and supported this event, it was fantastic to see such a cheerful and involved crowd! The amusement rides - the Jumping Castle, Swinging Chairs and Slide were a great hit with young and old alike and we do hope you all had a great day and enjoyed the great community spirit here in Welshpool.

Days such as this rely heavily upon our fantastic Volunteers and so to you all – food handlers/ticket sellers etc, a huge ***thank you*** across the board to you all for the countless hours you provided to make this a great day to remember for the whole community.



### Welshpool Lawn Mower Race Day SPONSORS

Ace Industrial	Port Welshpool General Store
Ag Warehouse Foster	Prom Port Cottages
Anedda Family	South Gippsland Property Facilitator
Bhagwan Marine	Stadium 4 Cinema Leongatha
Boost2Drive	The Pantom Store, Toora
Brant Leongatha	The Rusty Gurnard, Port Welshpool
Coprice Leongatha	Toora & District Community Bank
David & Ben Grylls	Toora Lions Club
Evans Petroleum	Toora Post Office
Fonterra	Toora Tourist Park
Foster Service Centre	Welshpool & District Advisory Group
Great Southern Ride, Meeniyan	Welshpool Outdoors
Gurneys Cider, Foster	Welshpool Cranes
Leongatha Health & Whole Foods	Welshpool Golf Club
Long Jetty Caravan Park	Welshpool Hotel
Mason Logistics	Welshpool Supermarket & Café
Moonlit Sanctuary	Wildlife Coast Cruisers
Paul McPhail	Wonthaggi Bunnings
Phillip Island Nature Park	

**Thank you to all of our sponsors for your support  
Please support our local businesses**



COME JOIN US FOR A

# CHRISTMAS

*Eve Party!*

24TH DECEMBER | 2-6PM  
SAGASSAR PARK, TOORA

**LIVE BANDS**  
The Pegs, Teskey's, Barnhurst,  
Tone Deev & Beer Chasers

Loads of fun Kids' Activities :

- ✦ Make Your Own Reindeer Food
- ✦ Christmas Ornament Crafts & Decorate the Tree!
- ✦ Elf on the Shelf Hunt! Find the hidden elf!
- ✦ Prizes to be won

**KIDS FUN**

**FOOD STALLS**

- ✦ Toora Lions Club BBQ
- ✦ Fruit Salads
- ✦ Popcorn
- ✦ You're welcome to BYO a picnic

WE WILL ALSO BE ANNOUNCING THE WINNERS OF THE  
'LIGHT UP TOORA' COMPETITION & DRAWING OUR CHRISTMAS RAFFLE

**FREE ENTRY! ✦ FOOD STALLS AT COST**

# TCAT 2024 CHRISTMAS RAFFLE

LOTS OF GREAT PRIZES -  
\* HAMPERS  
\* PRIZE PACKS  
\* LOCAL BUSINESS VOUCHERS

TICKETS - \$2.00 EACH  
DON'T HAVE CASH -  
NO PROBLEM -  
SCAN THE QR CODE TO  
BUY ONLINE



RAFFLE DRAWN AT THE TCAT  
CHRISTMAS EVE PARTY  
24 DECEMBER - 2-6PM  
@SAGASSAR PARK

PLEASE INCLUDE FULL NAME &  
PHONE NUMBER - ALL WINNERS  
WILL BE NOTIFIED  
YOU DON'T NEED TO BE AT THE  
PARTY - BUT WE WOULD LOVE  
TO SEE YOU THERE

E.W. & H.P. FOWLER  
WELSHPOOL OUTDOORS &  
ORIGIN GAS SUPPLIES

19 MAIN STREET  
WELSHPOOL VIC 3966  
PH: 0356881304  
[welshpooloutdoors@bigpond.com](mailto:welshpooloutdoors@bigpond.com)




# GRAVELY

NEW IN STORE  
ENQUIRE NOW

2024  
AUSTRALIA

**CHRISTMAS**  
**@ THE**  
**WELSHPOOL HOTEL**  
**SANTA IS COMING TO**  
**TOWN**

JOIN US SUNDAY 22ND DECEMBER FROM  
 2PM WITH LIVE MUSIC FROM FIONA  
 CURRAM @ THE WELSHPOOL HOTEL  
 FOLLOWED BY  
 WELSHPOOL CFA BRINGING SANTA FOR  
 A VISIT @ 5PM

DECEMBER 22 • FROM 2PM  
 21-23 MAIN STREET WELSHPOOL  
 FIONA CURRAM PLAYING 2-5PM

**VENUS BAY SURF LIVE SAVING CLUB**  
**MARKETTA**  
**FESTIVAL**

THUR **GIN BAR LIVE** 5 PM 'TIL LATE  
**JAN 2 FOOD MUSIC**  
**TRUCKS MARKET STALLS**

**VBSLSC.ORG.AU** ENQUIRIES  
 SIM 0408 332 126

PEDESTRIAN ONLY ACCESS/SHUTTLE BUS RUNNING

**FRESH**  
**SUMMER**  
**PRODUCE**  
**MARKET**  
 BUY SWAP SELL  
**FISH CREEK**

JAN TO | SATURDAYS  
 MARCH | 9 - 11AM

**Fish Creek Playground**

Bring your locally grown produce for  
 Buy Swap Sell

Fish Creek Community Composter  
 Marg 0488 592 725

The 116th

**FOSTER**  
 & DISTRICT  
 AGRICULTURAL  
**SHOW**

Since 1903

**Saturday 24th Feb 2024**  
**Foster Showgrounds, Station Rd, Foster**

Woodchop, Dog High Jump, Yellow Brick Road, Young Farmers Challenge,  
 On Farm Competitions, Giant Pumpkin, Sheaf Tossing, Photography,  
 ...and all your usual favourite events

**JBN  
CAR CLEANING**



0428683533

**service list**

- Exterior Clean
- Interior Clean
- Basic to Ultimate Options
- Sedans, Wagons, SUV, 4WD, Utes
- Gift Vouchers Available
- Price List Available
- Servicing Yarram to Fish Creek
- Friday, Saturday or Sunday



**Driving  
Miss Daisy**  
We're There For You

**Alice Filon**  
Independent Franchise Owner  
Gippsland  
For Enquiries & Bookings  
Call: 0492 122 024  
E: [gippsland@drivingmissdaisy.com.au](mailto:gippsland@drivingmissdaisy.com.au)



[www.drivingmissdaisy.com.au](http://www.drivingmissdaisy.com.au)

Companion driving for: Medical appointments, Hairdresser, Shopping, Scenic drives, Airport/rail/bus transfer, Pets to vet, School & children's activities

**Danny O'BRIEN MP**  
Member for Gippsland South

- 54B Cunninghame St, Sale VIC 3853
- 03 5144 1987
- [danny.obrien@parliament.vic.gov.au](mailto:danny.obrien@parliament.vic.gov.au)
- [www.dannyobrienmp.com.au](http://www.dannyobrienmp.com.au)



*Working for Gippsland South*

[f](#) [t](#) [i](#) /dannyobrienmp

**THE NATIONALS** for Regional Victoria

**FIRE DANGER PERIOD**

will begin  
1.00am on 9 December 2024



**Mornington Peninsula Shire Council**

**French Island**

**Baw Baw Shire Council**

**South Gippsland Shire Council**

**Wellington Shire Council**

**East Gippsland Shire Council**

**Latrobe City Council**

[www.cfa.vic.gov.au/firedangerperiod](http://www.cfa.vic.gov.au/firedangerperiod)

*Welshpool Supermarket & Café*

Pies, pasties, sandwiches & salads  
home-made slices & muffins.  
Hot & cold drinks & more

**TRADING HOURS**

Monday – Friday 7am to 4pm  
Saturday 9am to 2pm  
CLOSED SUNDAY



**WELSHPOOL CEMETERY TRUST**

**CHAIRPERSON**

**DAVID GRILLS**

**0428 858 961**

**FOSTER SEAFOODS**



35 Main Street, Foster  
Ph: (03) 5682 2815

With catches of Inlet fish arriving within the shop on a daily basis and our vessels returning from extended trips into Bass Strait, you can be assured that the quality is second to none.

We also have an extensive list of products with very competitive prices.

**Port Welshpool and District Bowling Club**

Contact Angela Tisler 0448440153

[portwelshpoolbc@gmail.com](mailto:portwelshpoolbc@gmail.com)

22 Bowling Club Rd  
(Right of the Long Jetty along the foreshore)  
Social and Barefoot Bowls Fridays during the  
bowls season (Oct - end of April) from  
4:30pm.  
Bowls provided.

Bar service available. BBQ & Salad dinners  
available most weeks at 6:30pm

**NEW MEMBERS AND BOWLERS MOST  
WELCOME**

# CROSSWORD



## Across

- |                              |                           |                        |
|------------------------------|---------------------------|------------------------|
| 1. Old stories               | 28. Prevaricated          | 45. Streamlined        |
| 5. Anagram of "Space"        | 31. A Canadian winter hat | 46. Search haphazardly |
| 10. Backside                 | 34. Pup                   | 50. Homeric epic       |
| 14. Cain's brother           | 35. Actress Lupino        | 52. A kind of macaw    |
| 15. Anagram of "Talon"       | 36. Astringent            | 54. Shade tree         |
| 16. Brother of Jacob         | 37. Muse of love poetry   | 55. Purges             |
| 17. Embroidery               | 38. "Smallest" particle   | 56. Self-centred       |
| 19. Tanks                    | 39. Ribonucleic acid      | 58. Poems              |
| 20. Papa                     | 40. Eyeglasses            | 59. Yields             |
| 21. Turf                     | 41. Verse                 | 60. 3 times 3          |
| 22. Gowns                    | 42. Salary payment        | 61. Prying             |
| 23. Pettifogger              | 44. Female deer           | 62. Utilizers          |
| 25. A yellowish-brown colour |                           | 63. French for "Head"  |
| 27. Which person?            |                           |                        |

## Down

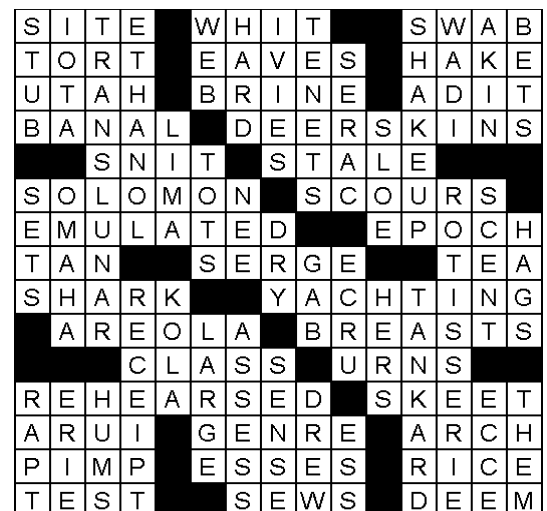
- |                                |                             |
|--------------------------------|-----------------------------|
| 1. Territories                 | 29. Biblical kingdom        |
| 2. A religion based on sorcery | 30. Matron                  |
| 3. Slender                     | 31. Canvas                  |
| 4. A late time of life         | 32. Forearm bone            |
| 5. Record player               | 33. Adjacent to docks       |
| 6. Cringe                      | 34. Ruins                   |
| 7. Again                       | 37. Type of sword           |
| 8. Budgies                     | 38. Throat-clearing sound   |
| 9. Antlered animal             | 40. Outbuilding             |
| 10. Annul                      | 41. Ancient empire          |
| 11. Usefulness                 | 43. Stylish                 |
| 12. Spouse                     | 44. Coercion                |
| 13. Kitty-cat                  | 46. Formula 1 driver        |
| 18. Wood shaping machine       | 47. Eagle's nest            |
| 22. Coarse file                | 48. Gleam                   |
| 24. Travelled through water    | 49. Master of ceremonies    |
| 26. Angel's headwear           | 50. Weightlifters pump this |
| 28. Hit hard                   | 51. Adriatic resort         |
|                                | 53. Was a passenger         |
|                                | 56. Euro forerunner         |
|                                | 57. Explosive               |



*Winning entry will receive a free coffee and cake from the Welshpool Café & Supermarket*



## LAST MONTHS CROSSWORD RESULT



Sponsored by: **Welshpool Supermarket**

Entries must be received before  
**15<sup>th</sup> February**

All correct entries will be put into a hat and the winner will be drawn by Supermarket staff. No correspondence will be entered into etc.

Please remember to double-check your spelling.

**Remember to include your name, contact number and date on your returned entry, Thank you.**

**Winner of the November Crossword:**

Glenyse Pyke



Looking for Expression of Interest

## TABLE TENNIS SUMMER PROGRAM

Welshpool Memorial Hall

All Equipment Supplied

All Levels Welcome

For 6 x Fridays (20/12/24 – 24/01/25)

9:30am – 11:30am

\$2/player/time

Please contact JJ on 0400 114 905

We need enough interest for this programme to run.



## BAILEY'S CHRISTMAS CAKE

Put the following ingredients **into a saucepan and heat until butter melts and sugar dissolves.**

- 1 cup Black Coffee
  - ½ cup Irish Cream
  - ½ cup Brown Sugar
  - 500gms Mixed Fruit, include glace cherries, dried apricots.
  - Instead of mixed fruit Sultanas with any dried fruit to equal 500gms can be used.
    - ½ cup Butter
- When cold mix in:
- 2 large Eggs or 3 small
  - ½ tsp Cinnamon
  - ½ tsp Nutmeg
  - Vanilla Essence
- Then add.....
- 1 ½ cups S.R. Flour
  - 1 tsp Mixed Spice.

Mix well then pour into a lined 20cm spring form cake tin.

Bake for 1hr 20 mins at 180 degrees or when skewer comes out clean.

Enjoy!

Wishing everyone all the Very Best for Christmas, however you spend it.

Wishing your Health and Happiness for 2025.

From the Committee and Members of the Port Welshpool Museum.

Opening hours over the Summer Holidays are

Saturday and Sunday 12.30 to 4.30

Or for group bookings phone Janet

## TABLE TENNIS

WELSHPOOL MEMORIAL HALL

Please join us for a friendly social hit of table tennis

Wednesday 6.30pm-8.30pm

Entry is only \$2 per session

Please contact JJ on 0400 114 905

for all enquiries

All equipment supplied

All ages, all levels welcome!



## Carpet Bowls

Old Ferry Terminal, Port Welshpool

Come along for a fun afternoon of

Carpet Bowls

No membership

or equipment required,

everything is supplied for you.

Every Tuesday afternoon:

12.30 - 3.00pm

\$5 per session followed by tea,

coffee, biscuits and a chat.

Everyone welcome!



# LOCAL SERVICES.....

## How can we help?

For information and assistance:

- 9 Smith Street, Leongatha VIC 3953
- 5662 9200
- council@southgippsland.vic.gov.au
- www.southgippsland.vic.gov.au
- Facebook: southgippslandshirecouncil



**Snap  
Send  
Solve**

Did you know that you can report something that needs fixing via Snap, Send, Solve?

Simply download the app from the App Store or Google Play and start reporting



**AAC MOBILE**  
**AUTO AIR CONDITIONING**  
*Maintenance & Repairs to...*  
**TRUCKS \* TRACTORS \* MACHINERY \* PASSENGER & FOOD TRANSPORT VEHICLES**  
Ian Dubignon **M. 0448 761 642**  
[aacautoair.com.au](http://aacautoair.com.au)

## WELSHPOOL CRANES

0428 171 666

Mobile Crane  
Dogmen  
Riggers

**Gary Mason**  
info@gmmason.com.au



THROCKMORTON SERVICES PTY LTD  
**BUILDING MAINTENANCE  
& CARPENTRY**  
Email: [throckmorton@bigpond.com](mailto:throckmorton@bigpond.com)  
Mb: 0417 582 918  
ABN 72 875 167 020



**John Hoy**  
Trade qualified Farrier  
(25 years experience)

0447 229 390



FOR ALL YOUR TREATED PINE NEEDS

POSTS    SAWN TIMBER    DECKING    CUSTOM TREATING

SLEEPERS    NUTS AND BOLTS    PALINGS    AND MORE

SOUTH GIPPSLAND HIGHWAY, ALBERTON, VIC, 3971  
Ph (03) 5183 2437    Fax (03) 5183 2659    Email sales@albertontimber.com.au



## CONCRETER

Delivering Quality Concrete Services for Residential, Commercial & Farm Upgrades.

**CALL KANE TODAY FOR A FREE ON-SITE CONSULTATION**    **5613 2013 | 0400 840 729**  
E: admin@sgconcrete.com.au  
W: www.sgconcrete.com.au

## SOUTH GIPPSLAND SEPTIC TANK CLEANING

Also Portable Toilets Hire

Call Chris Whittle  
**(03) 5688 1572**



## TV DATA PHONE

Digital Antennas, Masts, Repairs. TV Wall Mounts, Speakers, Home Theatre & Hidden Wiring. WIFI. Cameras & Security Systems. Phone & Computer Outlets. Networks. Satellite Dish and Receivers, VAST and StarLink. Mobile B.B. Antennas. Test and Tagging.

Licensed Cable & Security Installer  
Domestic, Commercial & Industrial  
**Steve Mooney 0427 257 222**



Kirwan Builders  
**TK Construction**  
*"for all your building needs"*

TK Construction – Michael Kirwan  
6565 South Gippsland Highway HEDLEY VIC 3967  
P: 03 5184 1223 | M: 0428 911 900  
E: kirwanbuilders@gmail.com

HIA MEMBERSHIP: 813 711 | DB-U: 20399 | A.B.N: 40 896 158 242

# Gatt's Tile Roof Restorations

We cater for everything roofing

- Pressure washing
- Roof painting
- Repointing tile roofs
- Install gutter guard
- Replace broken tiles
- Repair leaks.

-External high pressure washing of:

- \*Houses
- \*Buildings
- \*Driveways
- \*Gutters



Port Welshpool workshop

Morwell workshop

Please phone 0434 725 536

All work is done by tradesmen

Fully insured and WorkSafe approved.



# Port Welshpool & District Museum

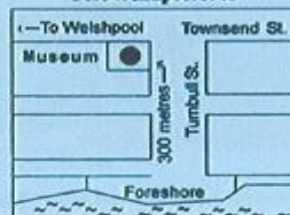


*The building that houses the collection was designed and built by John Avery in 1881 for W.B.M. Smith. Being the first large home in the village, it became the unofficial community centre, conducting dances, weddings, church services and even a wine salon.*

## ADMISSION CHARGES

Adults	\$5
Pensioner	\$4
Student	\$2
Family	\$10

Car. Townsend & Turnbull Streets  
Port Welshpool 3965



Opening Hours 12.30pm - 3.30pm  
Sat, Sun, Public Holidays  
and by Appointment.

or call the Museum Secretary  
Janet Taylor 0413 199 776

Website - [ptwelshpoolmuseum.wixsite.com/pw-museum](http://ptwelshpoolmuseum.wixsite.com/pw-museum)

Group visits are welcomed.



Foster Golf Club  
7 Reserve Street  
Foster Victoria  
3960

19 Chantelle Peters (03)5682 2272  
golfclub19@outlook.com.au

## ANTHONY BRAVINGTON

### Cleaning & Property Maintenance Contractor

- Commercial Cleaning, Domestic Cleaning and all types of Property Maintenance
- Accommodation Contracts
- Office Building Contracts
- Retail Shops Contracts
- School Cleaning Contracts
- Builders Cleans
- All Property Maintenance etc
- Window Cleaning
- Carpet Steam Cleaning



#### THURSDAYS & FRIDAYS ONLY

1 bedroom house	\$70
2 bedroom house	\$90
3 bedroom house	\$120
4 bedroom house	\$150

Call Anthony for all your cleaning needs

Mobile: 0418 146 986

Email: [bravtecleaning@gmail.com](mailto:bravtecleaning@gmail.com)

## RON LEACH

### CALF BUYING

Mondays & Thursdays

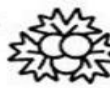
Top Prices

Also buying friesland heifers  
& other small beef stock

Call 0429 881 464

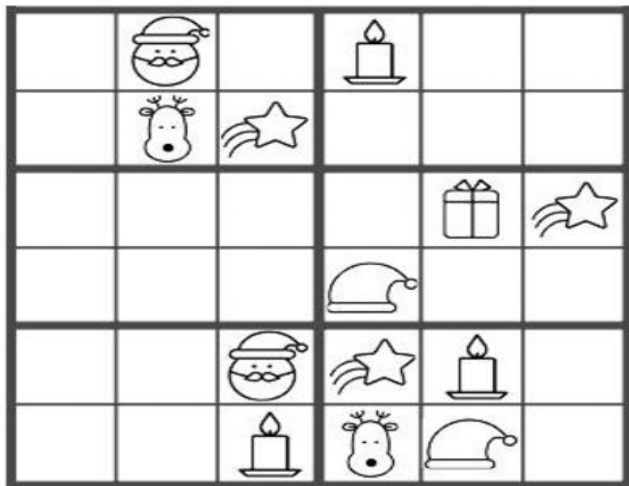


Name \_\_\_\_\_



# Christmas Sudoku

Directions: Draw in the missing pictures so that each row, column and 2x3 grid contains one and only one example of each picture.



© 2017 workbooks-to-print.com



# Christmas WORD SEARCH

I I J L L S D Y R J E I P J J C C V I P  
 W M V G K N S A V C M R L Z O A A B V J  
 G R H O G S X D T T D Z C K L K R O D J  
 B I A Q W L W I C H X K D P L R O I N I  
 V R I P R X W L T T X N R I Y X L J Q N  
 O S Q E P D O O M W R E A T H Q E E K G  
 F T B N E I C H R I S T M A S T R E E L  
 N G O Q A N N Q L E E X E D J N S O Y E  
 D A E R B R E G N I G N E L A C T F N B  
 K I C E N G S T P F G C A M V E Y G Z E  
 Z Q A N K A S H R A O Y W C L E Q K Y L  
 P Q L U W Q M G W R P O D T Y R S A A L  
 H L P C A Z T E A H N E S M Z D T K W S  
 W J E C D K R T N S Z I R E E D N I E R  
 O M R A H N I V H T M G U Y N D W A V M  
 J V I C O O A W P D S N W D O S K Q C S  
 U T F R N O B L D N O R T H P O L E A S  
 H L S S F L G M R K L U T H Z B L N Y E  
 C O B S G E F G U A M W D X Y D T L U D  
 W O B H B A K B H D G Z O H T A I F K L

- |                |             |                |
|----------------|-------------|----------------|
| JINGLE BELLS   | FIREPLACE   | NORTH POLE     |
| BOW            | GARLAND     | ORNAMENTS      |
| CANDY CANE     | GINGERBREAD | PRESENTS       |
| CAROLERS       | HOLIDAY     | REINDEER       |
| CHRISTMAS TREE | JOLLY       | SNOWMAN        |
| DECORATIONS    | SANTA       | WREATH         |
| ELVES          | MISTLETOE   | WRAPPING PAPER |



## The Month Of December

BIRTH STONE



ZIRCON

BIRTH FLOWER



NARCISSUS

STAR SIGNS



SAGITTARIUS & CAPRICORN

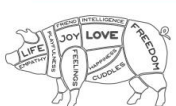
### Personality

December born are the charmers as they have this trait of bringing a place alive with their jokes and smile. They wear a big smile on their face most of the time and that is how people start recognising them. They are attractive personalities and have a very gentle heart as well.

### Did you know...?

- An ancient legend states that some forest animals are able to speak in human language on Christmas Eve!
- December 28th (formerly known as Childermas) is now considered by some to be the unluckiest day of the year. Because it celebrated King Herod's viciousness and Jesus' suffering.
- The term Yuletide comes from a Norse tradition of cutting and burning a tree to bring in the Winter Solstice.

## Special Days



**10 DECEMBER**  
International Animal Rights Day



**13 DECEMBER**  
Christmas Jumper Day



**25 DECEMBER**  
Christmas Day



**31 DECEMBER**  
New Years Eve

## Famous December Birthdays

Taylor Swift, Dick Van Dyke, Jamie Foxx, Charlie Puth, Richard Hammond, Woody Allen, Nelly Furtado, Britney Spears, Amanda Seyfried, Jenna Dewan Tatum, Ozzy Osbourne, Jay Z, Tyra Banks, Nicki Minaj, Dame Judy Dench, Hailee Steinfeld, Vanessa Hudgens, Brad Pitt, Steven Spielberg, Christina Aguilera, Samuel L Jackson, Jared Leto, Denzel Washington, Stan Lee

## Hello December

- D**iamond turns into gem by
- E**nduring what should have
- C**rushed it. But instead,
- E**very ounce of pressure
- M**akes it stronger than
- B**efore. And if coal can
- E**volve, you can too because you're
- R**are, strong, and beautiful

