



Welshpool Op Shop

Have you visited the Op Shop Lately? There have been some major improvements taken place recently and the Op Shop has been re-vamped with a fresh new look. All furniture items are now on display at the front of the store including donated goods and commission furniture for sale. The clothing racks have been relocated closer to the change room allowing for more browsing room for customers. We still have a large array of collectables, books, toys, household items, linen and crockery for sale. A big thank you to all the volunteers who gave up their valuable time during our Saturday working bee and helped create the new improved look of the Op Shop. Clean and sellable furniture and clothing donations can be accepted, please speak to one of our volunteers prior to bringing your goods down on 0474 591 014. Call in and say "Hi" to our volunteers between the hours 10am to 3.30pm Monday to Friday.



Disclaimer

This newsletter is an independent self-funded publication produced by staff and volunteers of the RTC and it does not reflect the opinions of the Committee members, South Gippsland Shire, or the Department of Planning and Community Development.



TRADING HOURS

MON - FRI
10.00AM - 3.00PM

- WELSHPOOL COMMUNITY LIBRARY
- BENDIGO BANK AGENCY
- CENTRELINK AGENCY
- V/LINE TICKETING OFFICE
- ROOM HIRE AVAILABLE
- PASSPORT APPLICATIONS
- COPY & PRINT SERVICES

Other services by appointment only

- Diabetes Clinic – 5683 9780
- Gibson Accounting – 5176 2031
- Royal Flying Doctors – 03 8412 0480
- Massage – 0427 881 398



Centrelink Website

The Centrelink website (www.centrelink.gov.au) has been incorporated into the Department of Human Services website humanservices.gov.au. The new site is a convenient, single entry point for health, social and welfare payments and services.

Any questions regarding your payments or entitlements, this would be your first port of call.

- ***You are able to register online and access details of your account.***
- ***Find out the latest information regarding services.***
- ***Calculations can be done to work out family assistance.***
- ***Access forms and brochures.***

A touch screen computer is available at the Welshpool Rural Transaction Centre for your use.

Staff at the Centrelink agency are able to assist you with registration etc.



VLINE BUS SERVICES

**Purchase tickets at the
Rural Transaction Centre or
collect a VLINE Bus Timetable**

DIABETES CLINIC

If you would like an appointment
or have any queries, please contact

Karen on 03 5683 9780



Gibson Accounting

PH: (03) 5176 2031

Fax: (03) 5174 6313

101 Hotham Street
Traralgon, Vic 3844

Email: kieran@gibsonaccounting.com.au

Kieran Olree

Kieran Olree is at the RTC every Wednesday

By appointment only - **(03) 5176 2031**

For more information and all the latest tax
updates and handy hints for tax time,
please visit Gibson's website:

www.gibsonaccounting.com.au

Welshpool and District Primary School Says “Goodbye” to Carmel Sutherland

At the end of last term Welshpool and District Primary School said goodbye to our long serving Business Manager, Carmel Sutherland. After 23 years of operating the office Carmel has decided to retire. Carmel has been an avid supporter and friend to all students who have passed through Welshpool and District PS. Her kind and loving approach is the reason her office is adorned with letters and flowers from students.

Some of the loveliest experiences I have seen, here at school, have been the connection Carmel has with students. From students saying ‘Good morning Caramel’ to the Preps who ‘just want to see Carmel’ or those students who just need the magic ice pack from Carmel. Every one of these connections are real and filled with love.

Carmel will be greatly missed by not only the students but by the staff and families too. On behalf of the school community I would like to say ‘Thank you Carmel’ for being an integral part of Welshpool and District Primary School; for the support of our families, students and staff, for your smile and warmth and for being the face of WDPS over the past years. We know that you will enjoy your retirement and enjoy being able to spend more time with your family and being able to travel.

Gabrielle Boyd Principal

Carmel is very kind to me. She helps me a lot and has a beautiful voice and beautiful curly hair. Daisy P

I like Carmel because she is kind and nice. She always smiles at me. Karlroy



I love her. She is nice and does heaps of stuff for the school. Molly

Carmel always gives me my bookclub. She also asks me to help with the newsletters. I really like her. Charlie T

Making good things happen

When you bank with us, profits pour into the community. \$1,328,043 so far.

A bank giving back sounds unusual. For us, it's business as usual.

Find out more. Call us on 03 5688 1051 or search Bendigo Bank Welshpool Agency.



 **Bendigo Bank**

Community Bank
Toora, Foster and Welshpool

Welshpool Community Library

We were due to report that the library was now back up and running full time. However unfortunately due to the ever changing situation we are all currently facing, the library has once again been closed.

You are able to call in on **Wednesday's between 12 noon and 2 pm** when the librarian Sue will be here. Browsing for up to 15 minutes is allowed and Sue can process any loans you may choose.

The website and app is also still available for placing books on order. Once these books become available at Welshpool you will be notified and able to call in and collect them.

Please be aware this may again change due to circumstances. Feel free to call in and ask the staff at the RTC for an update on the position of the Library services.

Sorry for any inconvenience this may cause.

Take care and stay safe.

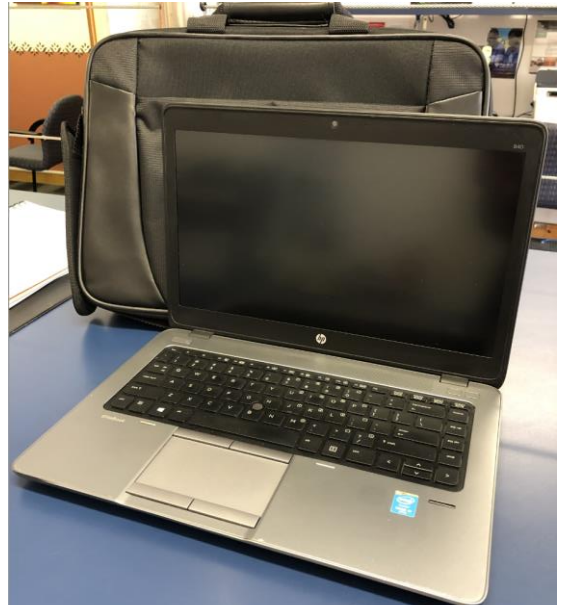


THANK YOU

SOUTH GIPPSLAND SHIRE COUNCIL

The Welshpool and District Advisory Group would like to thank the South Gippsland Shire Council for their donation of \$995 through the Small Grants Program. These funds have been used to purchase a new laptop for the Welshpool Rural Transaction Centre to help with the running of the RTC and Op Shop.

We thank the Council for their ongoing support.



WELSHPOOL RTC



New Jackets in store now

Starting from \$47

Fleece jumpers \$30

Hi Vis and Casual wear

Call in or phone 56881051



WELSHPOOL KINDERGARTEN

OUR KINDERGARTEN FOR OUR COMMUNITY

Welshpool Kindergarten has had a terrific start to the year delivering 15 hours of 3 & 4 Year Old Kindergarten to families of Welshpool and surrounding districts. As part of Welshpool Kindergartens establishment as a standalone service, it is going to review its philosophy.

Welshpool Kindergarten's philosophy is a statement about the beliefs, attitudes, core principles and values that underpin practices at Welshpool Kindergarten. It assists in planning, implementing, and evaluating quality experiences for the children who attend.

It guides everything that happens at Welshpool Kindergarten and supports:

- secure, respectful and reciprocal relationships
- partnerships with families
- quality inclusive practice
- equity and respect for diversity
- ongoing learning and reflection

A clear, thoughtful philosophy becomes an important declaration of how Welshpool Kindergarten sees itself, what it aims to achieve and where its priorities lie.

Wil Pruyn from Prom Coast Centres for Children encourages everyone who has had or who has a connection to the Kindergarten to have their say "We want to ensure that the Welshpool Kindergarten philosophy includes a commitment to work in partnership with families and our community to ensure the best possible outcomes for children."

"In developing the philosophy, we want to hear from our Welshpool and District families and community. Their contribution will help Kindergarten teacher Margaret and educator Denise consider their community views in the philosophy. Some questions to help prompt community thinking include:

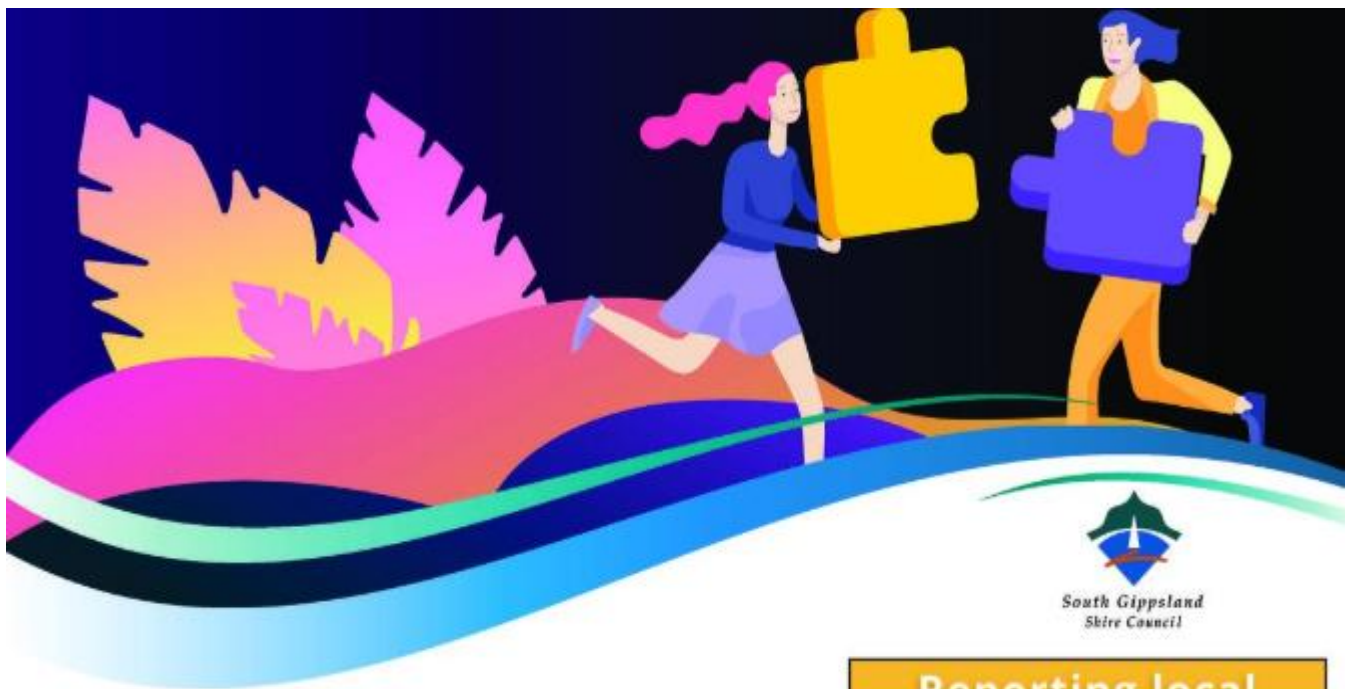
1. What do you value/like about Welshpool Kindergarten?
2. What does our community need from our Kindergarten?
3. What would be a goal/dream for Welshpool Kindergarten?

All contributions are warmly welcomed and can be contributed directly by email to the Kindergarten at:
welshpool.kin@kindergarten.vic.gov.au.

Alternatively you could call in and drop a note in at the Kindergarten. Due date for all contributions is Wednesday 29 July.

The Welshpool Kindergarten looks forward to working with its local community on this important project.





South Gippsland Shire Council News Implementing Our \$2M COVID-19 Community Support Package

Council is proud to be implementing phase one of our \$2M COVID-19 Community Support Package to provide assistance to those experiencing hardship from the pandemic.

Our aim is to help our region to recover from COVID-19 by working alongside our communities and by supporting and building the capacity of individuals, communities, businesses and organisations.

Phase one of the community support package is worth \$1 million and includes:

- Free flu vaccinations
- COVID-19 Business Grants
- COVID-19 Community Grants
- COVID-19 Community Support Program

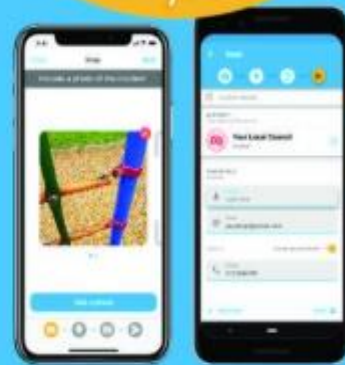
- Fee Refunds for Registered Businesses
- Waiver of the Victorian Landfill Levy increase
- Community Restarter Packs (including hand sanitiser, dispensers, PPE)

We know that many people, businesses and community groups have been doing it tough in recent times and we hope that this package will bring some much-needed relief.

For more information or to apply for available grants/initiatives please visit:
www.southgippsland.vic.gov.au/covidsupport

Reporting local issues is now a

SNAP



Snap Send Solve

For the benefit of communities, everywhere



**** REOPENING IN AUGUST ****

Phone 0400 110 318

the Olive Branch

35 Main Street
Welshpool
Prom Country



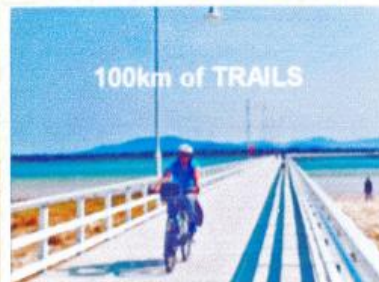
**LET'S GO RIDE A BIKE
WHAT A GREAT DELIGHT !!**



*Drinks and Snacks,
Coffee and Cake*



*Retro, Collectables and Bric a brac
We Buy and Sell*



*Day Hire Available -
From 8 Yrs to Adult*



Find us on
Facebook

Port Welshpool General Store

Welcome to Cel and Magno Malonzo, new owners of the Port Welshpool General Store.

Open 7 days a week, 9am to 8pm Phone orders can be taken on 5688 1210

We wish you every success in your new venture and welcome you to our town.



Magno with sister Luz



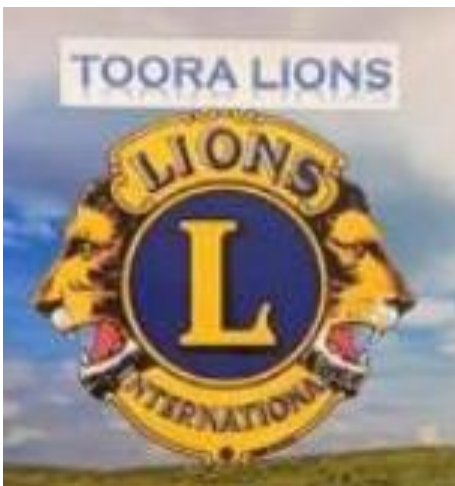
Welshpool Recreation Reserve

The Arthur Sutherland Recreation Reserve has recently been fortunate enough to add a second set of foldaway chairs and stand to our main meeting / dining area. These will be a great asset to the facility and be very well utilised throughout the year for our functions and by the sporting clubs who call Welshpool "home".

We would like to thank the Toora Lions Club for their generous donation of \$500, and also the Toora and District Community Bank through their grants program, for the amount of \$2883.

On behalf of the community, the Committee would like to thank all of our sponsors for their ongoing support.

There may not be much activity going on at the moment with the current situation, however we look forward to seeing you all back again soon.



E.W. & H.P. FOWLER
WELSHPOOL OUTDOORS &
ORIGIN GAS SUPPLIES

19 MAIN STREET
WELSHPOOL VIC 3966
PH: 0356881304
EMAIL: welshpooloutdoors@bigpond.com



WE'RE HERE TO STAY

QUAD BIKE COMPLIANT SAFETY STANDARD

Compliant quad bikes available now that meet the Consumer Goods (Quad Bikes) Safety Standard.

3 YEAR WARRANTY

CFMOTO

CFMOTO
CFMOTO.COM.AU

• Albury (02) 6021 4392 • Ballarat (03) 5339 6200 • Carrong (02) 6076 1151 • Donald (03) 5497 1611 • Ferntree Gully (03) 9758 8000
• Hamilton (03) 5572 4327 • Kilmore (03) 5782 1696 • Lake Boga (03) 5037 2389 • Leongatha (03) 5662 4044 • Portland (03) 5523 5399
• Red Cliffs (03) 5024 3610 • Shepparton (03) 5849 1577 • Tooradin (03) 5998 3216 • Traralgon (03) 5174 1702
• Warragul (03) 5622 3875 • Warrambool (03) 5561 1700 • Welshpool (03) 5688 1304 • Whittlesea (03) 9716 2019

Distributed by Mojo Motorcycles

Welshpool Basketball Association

Attention Players, Parents and Welshpool Basketball members

Message from President Tina Gamlin

The committee has reviewed the current situation and has unanimously decided that the upcoming All Ages basketball season, which would be due to start this September, will not go ahead.

I thank everyone for their understanding and appreciate the committee for their ongoing support.

We will continue to review the situation as to next year's Senior season in February.

Thank you to everyone involved with the Welshpool Basketball Association and I look forward to seeing you all again soon.

Take Care
Tina Gamlin
President



SCHOOLS ARE BACK
TAKE EXTRA CARE
DURING SCHOOL TIMES



Welshpool Op Shop & Nursery

Opening Hours

Monday – Friday : 10am – 3.30pm

Closed Saturday/Sunday

PH: 0474 591 014



RTC Rooms for Hire

Office Hire : \$11 per hour

\$33 per day

Consulting Room : \$27.50 per day

Meeting Room Hire : \$38.50 per day



West Gippsland
Libraries



Located at the
Welshpool RTC

Currently open

Wednesday's
12noon to 2pm



WELSHPOOL POST OFFICE

20 Main Street Welshpool Phone: 5688 1419

Email: welshpoolpostal@bigpond.com

New Samsung Deals in Store Now

Valid Until 9th August 2020

\$299[^] New

- 6.4" HD+ display
- Facial unlock
- 13+2+5MP main 8MP front cameras
- Fingerpri sensor
- 32GB expandable memory
- 4G
- Octa-core processor
- NANO SIM

Samsung Galaxy A11
59490
SAMSUNG

\$379[^] New

- 6.5" HD+ display
- 48+2+8+MP main 13MP fro camera
- 32GB expandat. memor)
- Octa-coi processor
- Facial unlock
- Fingerpri sensor
- Unlocks
- NANO SIM

Samsung Galaxy A21s
59493
SAMSUNG

\$299[^] Save \$30 Was \$329

- 6.4" HD+ display
- 16+5MP main 16MP fro camera
- 32GB expandal. memor)
- 1.8GHz octa-coi process
- Facial unlock
- Fingerpri sensor
- NANO SIM

Telstra Samsung Galaxy A30
44680
SAMSUNG



Find us on
Facebook

Creamy Bacon and Mushroom Pasta Bake



INGREDIENTS

- 300g dried orrechiette pasta
- ½ cup frozen peas
- 2 teaspoons olive oil
- 1 brown onion, thinly sliced
- 200g middle bacon, chopped
- 2 garlic cloves, crushed
- 1 tablespoon fresh thyme leaves
- 200g cup mushrooms, sliced
- 1/3 cup plain flour
- 2 x 375ml cans carnation light & creamy evaporated milk
- ½ cup cheddar cheese, grated
- ½ cup cheddar cheese, grated, extra

METHOD

- 1 Preheat oven to 180°C/160°C fan-forced.
- 2 Cook pasta following packet directions until just tender, adding frozen peas during last 2 minutes of cooking time. Drain. Return to pan.
- 3 Meanwhile, heat 2 teaspoons olive oil in a frying pan over medium heat. Add onion and bacon. Cook for 5 minutes or until onion is soft. Add garlic cloves and fresh thyme leaves. Cook for 1 minute. Add cup mushrooms. Cook for 3 minutes or until just tender. Add plain flour. Cook, stirring, for 1 minute. Gradually add evaporated milk. Bring to the boil, stirring (mixture should thicken slightly).
- 4 Add to pasta in pan with ½ cup grated cheddar cheese. Season. Toss to combine. Pour into a 10 cup-capacity ovenproof dish. Sprinkle with the extra ½ cup grated cheddar. Place on a baking tray. Bake for 30 minutes or until golden and heated thoroughly. Stand for 10 minutes. Serve.

Fudgy Chocolate Caramel Biscuits



INGREDIENTS

- 125g butter, softened
- 1 teaspoon vanilla extract
- 1 ¼ cups firmly packed brown sugar
- 1 egg
- 1 cup plain flour
- ¼ cup self-raising flour
- 1 teaspoon bicarbonate of soda
- 1/3 cup cocoa powder
- 1 cup chopped jersey caramels
- ¾ cup walnuts, toasted, chopped
- ½ cup dark chocolate melts, halved

METHOD

- 1 Preheat oven to 180°C/160°C fan-forced. Line 3 large baking trays with baking paper.
- 2 Using an electric mixer, beat butter, vanilla, sugar and egg until smooth. Sift flours, bicarbonate of soda and cocoa powder over butter mixture. Stir until combined. Fold in caramels, walnuts and chocolate.
- 3 Roll 2 level tablespoons of mixture into balls. Place on prepared trays, 4 cm apart. Using the palm of your hand flatten mixture slightly.
- 4 Bake, 1 tray at a time, for 10 to 12 minutes or until just firm to touch. Stand biscuits on trays for 5 minutes. Transfer to a wire rack to cool. Serve.

**Welshpool
Supermarket
& Café**

'Home Made Cakes'



OPEN 6 DAYS A WEEK
Monday to Friday: 9.30am-4pm
Saturday: 9am-3pm
Sunday: Closed

'Call in for a Latte'
Ph. 03 5688 1452

FRANCIE FEET

Home Visits / Mobile Foot Care
Leongatha to Yarram

Francie Feet, foot care offers trimming, filing of toenails and light massage to feet and lower legs

To Make an appointment

Call Fran:
(03) 5688 1615
0427 179 887

Don't wear your feet out.
Come along and treat yourself

Billy Goat SOAP for sensitive skin available, and Gift vouchers.
A great gift for family & friends!!



FOSTER SEAFOODS



35 Main Street, Foster
Ph: (03) 5682 2815

With catches of Inlet fish arriving within the shop on a daily basis and our vessels returning from extended trips into Bass Strait, you can be assured that the quality is second to none.

We also have an extensive list of products with very competitive prices.

Danny O'BRIEN MP
Member for Gippsland South



54B Cunninghame St, Sale VIC 3853
03 5144 1987
danny.obrien@parliament.vic.gov.au
www.dannyobrienmp.com.au

A better deal

for Gippsland South

Funded from Parliamentary Budget



*Butterfly Passenger
Service*

Based in Foster
Weekdays 8am - 6pm
ph: 0411 334 236

butterflypassengerservice@gmail.com



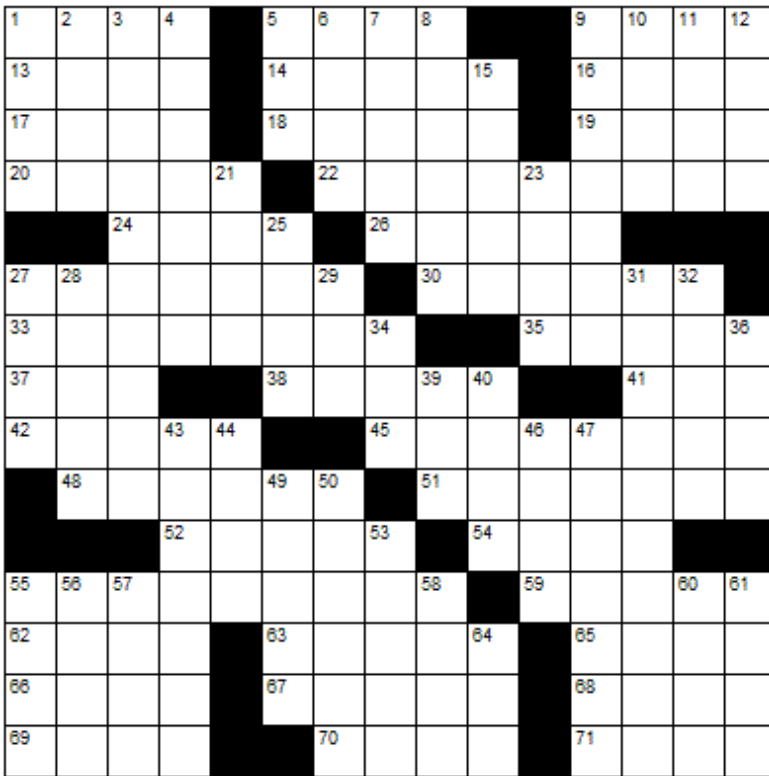
Bistro & Bar Meals: 3pm - 8pm
Takeaway meals & drinks
Call 5688 1209 to place your order

Main Street Welshpool, Vic 3966
Contact: SHANE
Ph/Fax: (03) 56881209
Email: welshpoolhotelmotel@gmail.com

Brrrr! it's another cold day
Keep Safe and Stay Warm
Sending Love and Hugs



CROSSWORD



Down

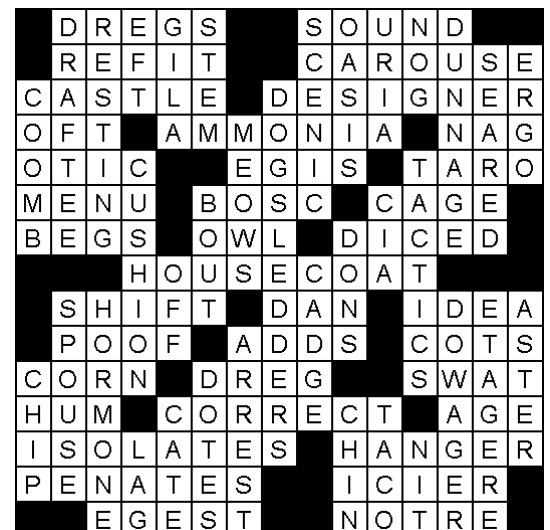
1. Singer Ives
2. Hodgepodge
3. Unacquainted
4. A crisp lustrous fabric
5. Card with one symbol
6. Wash
7. Accumulate
8. Porter
9. Imprisonment
10. Leave out
11. Double-reed woodwind
12. Decomposes
15. Rental agreement
21. Hissy fit
23. Water chestnut
25. Module
27. Envelop
28. Museum piece
29. Slime
31. Suggestive
32. Bloodsucker
34. Apprehend
36. Kid
39. Female deer
40. A cleansing agent
43. Goddess of divine retribution
44. Ear-related
46. Trigonometry (abbrev.)
47. Sidelong
49. Absurd
50. ___ public
53. French for "Queen"
55. Slang for Father
56. Pitcher
57. Sensed
58. Sketched
60. Applications
61. Sassy
64. Donkey

Across

1. Match
5. Winglike
9. A swinging barrier
13. Forearm bone
14. Dromedary
16. Part of an ear
17. Jazz phrase
18. Avoid
19. Violent disturbance
20. Bums around
22. Intensifies
24. List of options
26. Indian antelope
27. Authorship
30. Writing implement
33. Link
35. Agile Old World viverrine
37. Former boxing champ
38. Batrachians
41. Former North African ruler
42. A keyboard instrument
45. Toady
48. Half-wit
51. Otalgia
52. Of lesser importance
54. Falafel bread
55. Pooped
59. Outfit
62. Amazes
63. Nigerian monetary unit
65. Ascend
66. Sandwich shop
67. Sea eagles
68. Affirm
69. Anagram of "Star"
70. Evergreens
71. "___ we forget"



LAST MONTHS CROSSWORD RESULT



Sponsored by: **Welshpool Supermarket**

Entries must be received before

16th August, 2020

All correct entries will be put into a hat and the winner will be drawn by Supermarket staff. No correspondence will be entered into etc.

Please remember to double-check your spelling.

Remember to include your name, contact number and date on your returned entry, Thank you.

Winner of the June Crossword:

Roger McCowan



Community Group Listing

- ***Welshpool & District Advisory Group** – Contact: Linda Razinger 03 5688 1051
- ***Welshpool Fire Brigade** – training every Thursday night 7.30pm
- ***Welshpool Recreation Reserve** – Contact: Madelaine Mason 0409 976 211
- ***Welshpool Basketball Association** – Contact: Madelaine Mason 0409 976 211
- ***Prom Coast Soccer Club** – <http://www.promcoastsoccerclub.com.au/>
Contact: Shellie Cashmore 0419 322 384
- ***Welshpool Memorial Hall** – Contact: Alan O'Neill 5688 1419
- ***Friends of Agnes Falls** – <https://www.facebook.com/FriendsOfAgnesFalls/>
- ***Port Welshpool Fishing Club** – Contact: Vern Suckling 5688 1554
- ***Port Welshpool Working Group** – Contact: Alma Mattingley 0427 310 599
- ***Welshpool & District Playgroup** – <https://www.facebook.com/WelshpoolPlaygroup/>
- ***Welshpool & District Horticultural Society** – meeting every 2nd Wednesday of the month.
Contact: Fran Grylls Ph. 5184 1376
- ***Port Welshpool & District Maritime Museum** – Email: pwmuseum@gmail.com
Contact: Fran Grylls Ph. 5184 1376
- ***Port Welshpool Coast Guard** – Contact: Peter Carrolan 0417 372 059

Port Welshpool Coast Guard

Thank you to the Toora Community Bank Branch, Foster Branch and Welshpool Agency for their Community Bank Grant in which we received funds for new Stormy Seas Life Jackets. These jackets have an all-in-one function and will be a great asset to the volunteers at the Port Welshpool Coast Guard.

A note to our community members, the Port Welshpool Coast Guard boat will be at Paynesville for maintenance until around the 10th August.

Anyone wanting to join the Port Welshpool Coast Guard please contact Peter on the number above. New members are always welcome.



LOCAL SERVICES.....



M & C Doran
Quality is our speciality

Michael Doran
Qualified Carpenter & Joiner

16 Turnbull Street
Port Welshpool VIC 3965
Email: buildingservices@mcdoran.com.au

Ph. 03 5688 1229
Mb. 0429 038 409
Fax. 03 5688 1377



AAC MOBILE
AUTO AIR CONDITIONING

Maintenance & Repairs to...

TRUCKS * TRACTORS * MACHINERY * PASSENGER & FOOD TRANSPORT VEHICLES

Ian Dubignon **M. 0448 761 642**



John Hoy
Trade qualified Farrier
(25 years experience)

0447 229 390



Styling on Stanley
Unisex Salon

46 Stanley Street,
Toora
2962.
56862328

Liz O'Neill
Proprietor

Wednesday, Thursday, Friday 9am – 5pm
and Saturday

**Lawn mowing & Maintenance, Rubish removal, Painting
Window cleaning, Gutters cleaned, High pressure washer**

Lawn mowing & Maintenance
Free Quotes reasonable rates local tradesman



Dave Mcleish
Port Welshpool

0417 538 683

davemcleish@live.com.au



ALBERTON TIMBER
& TREATMENT PLANT P/L

FOR ALL YOUR TREATED PINE NEEDS

POSTS SAWN TIMBER DECKING CUSTOM TREATING

SLEEPERS NUTS AND BOLTS PALINGS AND MORE

SOUTH GIPPSLAND HIGHWAY, ALBERTON, VIC, 3971
Ph (03) 5183 2437 Fax (03) 5183 2659 Email sales@albertontimber.com.au

CONCRETER



SOUTH GIPPSLAND CONCRETE
ALL THINGS CONCRETE
ON-SITE TIMBER MILLING

0400 840 729

WWW.SGCONCRETE.COM.AU

**SOUTH GIPPSLAND
SEPTIC TANK CLEANING**

Also Portable Toilets Hire

Call Chris Whittle

(03) 5688 1572



TV & DATA SYSTEMS

Digital Antennas, TV wall mounts, Data & Computer outlets, Home Theatre, Hidden Wiring, Networks, Offices, CCTV, Repairs, Equipment Installations

Licensed Cable Installer
Domestic, Commerical & Industrial

Steve Mooney 0427 257 222

Kirwan Builders



TK Construction
"for all your building needs"

TK Construction – Michael Kirwan
6565 South Gippsland Highway HEDLEY VIC 3967
P: 03 5184 1223 | M: 0428 911 900
E: kirwanbuilders@gmail.com

HIA MEMBERSHIP: 813 711 | DB-U: 20399 | A.B.N: 40 896 158 242

ANTHONY BRAVINGTON

Cleaning & Property Maintenance Contractor

- Commercial Cleaning, Domestic Cleaning and all types of Property Maintenance
- Accommodation Contracts
- Office Building Contracts
- Retail Shops Contracts
- School Cleaning Contracts
- Builders Cleans
- All Property Maintenance etc
- Window Cleaning
- Carpet Steam Cleaning

THURSDAYS & FRIDAYS ONLY

1 bedroom house	\$70
2 bedroom house	\$90
3 bedroom house	\$120
4 bedroom house	\$150

Call Anthony for all your cleaning needs

Mobile: 0418 146 986

Email: anthonybravington@bigpond.com



J.J. Richards & Sons



WASTE DISPOSAL

- Permanent bins & clean up skips
 - Commercial, household or farm waste
 - Cardboard recycling
 - Weekly, fortnightly, monthly
 - 1.5M3 OR 3M3 BINS
 - Locally owned & operated
- CALL OR EMAIL FOR A QUOTE

PH: 03 9794 5722

www.jjswaste.com.au

operations.melbourne@jjswaste.com.au

*"Your local name
in the waste game"*



Local Medical Transport

Gippsland Southern Health Service, South Gippsland Hospital and Bass Coast Health are working together to transport people to medical appointments within the Shires of South Gippsland and Bass Coast.

The South Gippsland Coast Partnership have hospital vehicles located at Leongatha, Foster and Wonthaggi with a pool of volunteer drivers working from each site.

Transport is for all types of medical appointments including hospital admissions and discharges, podiatry, community health centre and GP visits.

If you require assistance with medical transport please call

5671 3372

Monday to Friday 9am to 4pm

Please also call if you would like to volunteer



WeighLess With Julie Ray

Weight Loss Consultant
Specialising in Healthy Eating

RED ROOF STUDIOS
125 Commercial Road
YARRAM VIC 3971

PHONE 0429832346
TO MAKE AN APPOINTMENT

TRY TO BE
A RAINBOW
IN SOMEONE'S
CLOUD.

– Maya Angelou

Types of Transportation

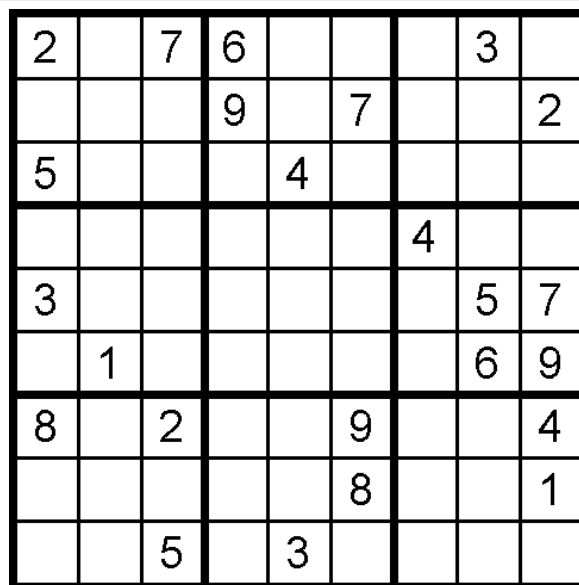
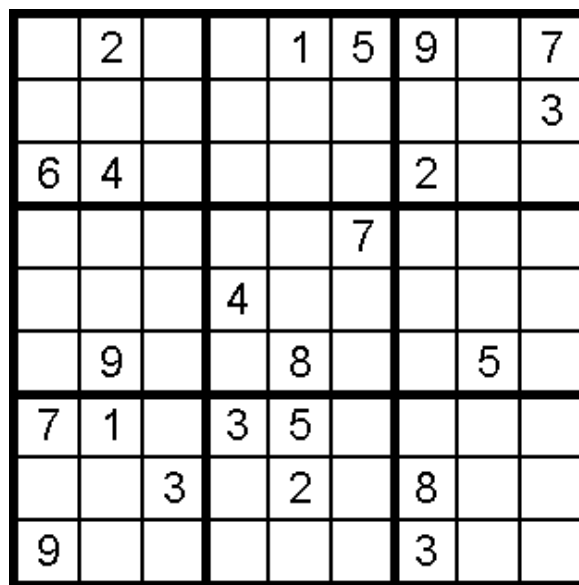
Sail into some fun with this puzzle! We've hidden every word that's in the word list on the next page. Plus, we've hidden an extra word that names a small three-masted ship. Can you find it? Words can appear horizontally, vertically or diagonally, both backward and forward.



- | | |
|-------------------|-------------------|
| AMBULANCE | OCEAN LINER |
| AIRPLANE | PADDLE WHEEL BOAT |
| AUTOMOBILE | RAFT |
| BICYCLE | SLEIGH |
| BLIMP | SNOWMOBILE |
| BOAT | SPACE SHUTTLE |
| CAMEL | SPEED BOAT |
| CANOE | STAGECOACH |
| CARRIAGE | STEAMSHIP |
| CHARIOT | SUBMARINE |
| DOGSLED | SUBWAY |
| DOUBLE DECKER BUS | SUV |
| FERRY | TANK |
| GLIDER | TAXI |
| HELICOPTER | TRACTOR |
| HORSEBACK | TRAIN |
| HOT AIR BALLOON | TRICYCLE |
| HOVERCRAFT | TROLLEY |
| JEEP | TRUCK |
| JET | TUGBOAT |
| KAYAK | UNICYCLE |
| LIMOUSINE | VAN |
| LOCOMOTIVE | WAGON |
| MOPED | YAWL |
| MOTORCYCLE | ZEPPELIN |



My favorite Winter activity is going Back INSIDE & PUTTING MY PAJAMAS ON.



JUNE SOLUTIONS

4	+	3	+	8	=	15
+		x		÷		
5	+	7	x	2	=	24
-		-		÷		
6	+	9	-	1	=	14
=		=		=		
3		12		4		

7	2	4	8	5	3	6	9	1
8	3	1	7	9	6	2	5	4
5	6	9	1	2	4	3	7	8
6	7	3	4	1	5	8	2	9
9	4	8	3	7	2	5	1	6
2	1	5	9	6	8	7	4	3
1	9	6	2	3	7	4	8	5
4	5	2	6	8	9	1	3	7
3	8	7	5	4	1	9	6	2

2	9	8	7	4	3	1	5	6
7	3	6	5	8	1	2	4	9
1	4	5	6	9	2	3	8	7
5	1	9	4	2	7	6	3	8
8	2	7	3	1	6	5	9	4
4	6	3	8	5	9	7	2	1
6	8	4	2	7	5	9	1	3
9	7	2	1	3	4	8	6	5
3	5	1	9	6	8	4	7	2

