



July 2025

Issue Number 576

Phone: 5688 1087

14 Main Street, Welshpool, 3966

email: rtcwelshpool@bigpond.com

www.welshpool.vic.au

The Welshpool and District Advisory Group (W.D.A.G.) Community Update – Closure of Bendigo Bank Agency

The Welshpool and District Advisory Group (W.D.A.G.), a long-standing not-for-profit community organisation, has proudly served the Welshpool area for many years, working to support and strengthen our local community.

When major banks began withdrawing from rural areas, W.D.A.G. took proactive steps to ensure essential services remained accessible in Welshpool. We successfully secured a Federal Government grant to establish one of Victoria's first Rural Transaction Centres (R.T.C.)—a significant milestone made possible through the dedication and hard work of our group. These funds enabled us to purchase the building that has since housed our community bank.

Following the closure of the local ANZ sub-agency, we were fortunate to partner with the Bendigo Community Bank in Toora, allowing banking services to continue locally through an agency of the Toora Community Branch.

For the past 26 years, the Welshpool Transaction Centre has operated with a committed team, offering reliable and personalised service to our customers. Sadly, we have been advised that, as of **October 6th**, Bendigo Bank will be closing our agency, along with 28 other small agency locations across the country. This news has come as a great disappointment to us all. We understand that formal notification from Bendigo Bank should now have been sent to all Welshpool Agency customers.

Despite this setback, W.D.A.G. remains committed to serving our community. The building will continue to operate as a **Centrelink agency and Public Library**, and we also have **office spaces available for rent**. We will continue to be a **Bisley Workwear stockist**, ensuring ongoing access to essential workwear locally.

Our community-owned **Op Shop**, managed entirely by volunteers, will also continue operating as usual. This shop plays a vital role in generating income that directly supports local initiatives, and we are immensely grateful to the volunteers who give their time so generously.

While we are saddened by the closure of our banking service, our determination to continue delivering remaining services is stronger than ever. On behalf of W.D.A.G., we sincerely thank all our banking customers for their loyal support over the years. Although this decision was beyond our control, your continued patronage has meant a great deal to us.

Thank you for standing with us. We look forward to continuing to serve the Welshpool community in new and meaningful ways.

Warm regards,
The Welshpool and District Advisory Group (W.D.A.G.)

Disclaimer

This newsletter is an independent self-funded publication produced by staff and volunteers of the RTC and it does not reflect the opinions of the Committee members, South Gippsland Shire, or the Department of Planning and Community Development.



TRADING HOURS
MON, WED, THU, & FRI
10.00AM - 3.00PM
PHONE 5688 1087

- WELSHPOOL COMMUNITY LIBRARY
- BENDIGO BANK AGENCY
- SERVICES AUSTRALIA AGENCY
- V/LINE TICKETING OFFICE
- ROOM HIRE AVAILABLE
- COPY & PRINT SERVICES
- BISLEY WORKWEAR

Other services by appointment only

- Gibson Accounting – 5176 2031



**VLINE
 BUS
 SERVICES**

**Purchase tickets at the
 Rural Transaction Centre or
 collect a VLINE Bus Timetable**

Agent

At a Services Australia Agent you can:

- **USE OUR COMPUTER** to access my.gov.au and other government services and information
- **USE OUR PHONE** to access the agency's self service options or to speak with us
- **ACCESS FREE WI-FI 24/7** to connect to government services – no password required
- **USE OUR EQUIPMENT** to upload, print and photocopy documents
- **GET YOUR IDENTITY DOCUMENTS CERTIFIED**

Agents can:

- help you to set up and access digital services
- help you find information online about payments and services
- arrange referrals to specialist services.

Agents can't:

- access your records
- make decisions about or change your payments or debts
- issue a Medicare card or Health Care Card
- do customer interviews
- contact the agency to get information about your payments or entitlements, without your permission.

Agents aren't Services Australia staff.

Your local Agent is:

Welshpool & District Advisory Group Inc

Address:
 14 Main St, WELSHPOOL

10am-3pm Monday,
 Wednesday, Thursday &
 Friday's

Self service

You can use myGov to access your Centrelink, Medicare and Child Support online accounts. Go to my.gov.au

You can also access our services through the Express Plus mobile apps. For more information go to servicesaustralia.gov.au/selfservice

Online Services Support Hotline

myGov Helpdesk 132 307 select option 1
 Centrelink Helpdesk 132 307 select option 2

Centrelink phone self service

Phone self service 136 240
 Report income and update your obligation requirements 133 276

For help in other languages

Centrelink 131 202
 Medicare and Child Support 131 450

How to contact us

ABSTUDY	Freecall™ 1800 132 317
Assistance for Isolated Children	132 318
BasicsCard balance enquiry	Freecall™ 1800 057 111
BasicsCard and	
Income Management	Freecall™ 1800 132 594
Centrelink debt recovery	Freecall™ 1800 076 072
Centrelink Indigenous	
Call Centre	Freecall™ 1800 136 380
Child Support	131 272
Complaints and feedback	Freecall™ 1800 132 468
Disability, sickness and carers	132 717
Families	136 150
Farmers and their partners	132 316
Financial Information Service	132 300
Grandparent Advisers	Freecall™ 1800 245 965
Indigenous debt recovery	Freecall™ 1800 138 193
Job seekers	132 850
Low Income Health Care Card	132 490
Medicare	132 011
Medicare Aboriginal and Torres Strait Islander	
Access Line	Freecall™ 1800 556 955
National Redress Scheme	Freecall™ 1800 737 377
Older Australians	132 300
Youth and students	132 490
TTY enquiries	Freecall™ 1800 810 586

TTY is only for people who are deaf or have a hearing or speech impairment. A TTY phone is required to use this service.



servicesaustralia.gov.au

Working from home and need a change of scenery? Office Space available to rent at Welshpool Rural Transaction Centre.

Mondays, Thursdays, and Fridays.

Contact us on **5688 1087** for more information.



Gibson Accounting

Kieran Olree

PH: (03) 5176 2031

Fax: (03) 5174 6313

101 Hotham Street
 Traralgon, Vic 3844

Email: kieran@gibsonaccounting.com.au

Kieran Olree is at the RTC every Wednesday

By appointment only - **(03) 5176 2031**

For more information and all the latest tax updates and handy hints for tax time, please visit Gibson's website:

www.gibsonaccounting.com.au

Welshpool Park

You may have noticed a new table and chairs at the Welshpool Park. There is also a new concrete pad awaiting an extra bin.

Thank you to the South Gippsland Shire for helping create a greater space for our community.

The BBQ in the new rotunda will be here soon, we are just waiting on its arrival.

Once the months start to warm up this will be a fantastic area for everyone to use.



Welshpool Golf Club

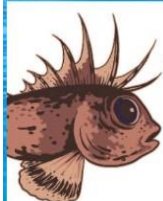
Friday's chicken run saw Russell take the chook out again, his freezer is full so he's donating the chooks back to the club, thanks Russ.

Saturday was a 2 person Ambrose Event with Gary Brown and Nino winning from the Stevo's (father / son combo of Geoff and Ethan). NTP's were Brownny on the 6th, Nino on 15 and Pappy on 17.

Thanks for the team that also cleaned up the damage to the course on the 2nd after some irresponsible person thought it would be a good idea to do some donuts around the Rec reserve and course, thankfully the cameras picked up the individual and the matter is now with the Police. Lucky Sue didn't catch them!

Sunday was an 18-hole Stableford event with Pappy winning the day with 31 points. NTP's were Nino on the 6th and Brett on the 17th

Thanks everyone who is braving the weather and playing in our Comps, the course is still playing great despite the wintery weather.



THE RUSTY GURNARD SOCIAL CLUB

Another \$500 given out. This time Welshpool Primary School is going to put some outdoor blinds up around the new BBQ area. Our representatives from the social club Kim and Andrew are pictured here with Principal Gaby Boyd and some of the junior students. Our gift is very much appreciated by all those involved with the Primary School.



SOUTH GIPPSLAND TENNIS ACADEMY PRESENTS

TERM 3 TENNIS AT FOSTER TENNIS CLUB



Sessions & Pricing:

Hot Shots (Junior programs)

High Performance Squad (Elite junior & adult)

NEW: Cardio Tennis (Adult - Hit your way to fit!)

All sessions are 45 minutes

Cost: \$180 / 9 week term

TERM 3: Monday 21st July to Monday 15th September

Head coach: Ricardo Iniesta

Bookings: rickilainen@gmail.com / 0417 778 455

Made with PosterMyWid.com



A variety of Bisley wear available to purchase. Orders can be placed if we don't have your size.

Call in to view our range
14 Main Street Welshpool

FLOOR STOCK SALE ON NOW



SALE
20% OFF



Myli – My Community Library

Join today at the Rural Transaction Centre and have access to a variety of books, audio books, DVD's and more. If it's not on the shelf it can be ordered in. Open Monday, Wednesday, Thursday and Friday 10am to 3pm. A Librarian also attends every Wednesday 12pm to 2pm for any assistance required.

Community Bank
Toora, Foster and
Welshpool

Bendigo Bank

Welshpool Agency

14 Main Street Welshpool

Monday, Wednesday, Thursday & Friday

10am to 3pm

PH: 5688 1087

Planning a burn off?

Check. Apply. Notify.

**Go to firepermits.vic.gov.au
or call 1800 668 511**



Community Bank
Toora & District, Foster and Welshpool

**Your town.
Your bank.**

Everything you need

We deliver the products and technology you'd expect from a big bank, plus the personal service you wouldn't.

As one of Australia's biggest banks, our heartland remains firmly local. As does our focus on you and the quality banking products you need.

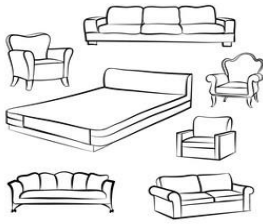
Feel good about who you bank with. Try Bendigo.

Find out more. Search Bendigo Bank near me.

📍 Toora & District 5686 2000 · Foster 5682 2287 · Welshpool 5688 1087

Bendigo Bank

Welshpool Op Shop & Nursery



Monday to Friday
Ph: 0417 367 629
10am – 4pm
Saturday 10am – 2pm



Call in and find yourself a bargain!
Plenty of clothes available.
Men's, ladies and children's clothes
of all sizes.
Fill a shopping bag for just \$5!!



Thank you to Mick, Dave and Jeremy for donating the firewood for the Op Shop, our volunteers are very grateful.

On behalf of the Welshpool and District Advisory Group and our Op Shop volunteers, we would like to sincerely thank Ray for the marvellous paint work creating our new Welshpool Op Shop sign.



More great bargains available at the Welshpool Op Shop

Single bed and base excellent condition \$30,
Kids table & chairs \$25



Welshpool Basketball Association

It's almost basketball season once again in Welshpool.

We will be running our usual season for minis, juniors, intermediates, and possibly a senior's competition as well.

Details are roughly as follows:

Wednesdays – Minis and Juniors

Thursdays – Intermediates and Seniors

Basketball Victoria registration fee - \$32 for under 18 years, \$46 for over 18 years.

Welshpool Basketball fee – Minis \$35, Juniors \$45, Intermediates \$55, Seniors \$55

\$20 refundable top fee

The season will run from Wednesday 3rd / Thursday 4th September through to Wednesday 26th / Thursday 27th November. Knockout Finals 3rd/4th December with the Grand Final on Sunday 7th December.

For more details and to register your interest please join the Facebook page [Welshpool Basketball Association – Official](#) or email welshpoolbasketballassociation@hotmail.com



“NAVIGATING THE AGED CARE SYSTEM OVER 65YO” INFORMATION SESSION



**POSITIVE AGEING SERVICE
HOME CARE PACKAGES
MY AGED CARE**

***HEALTH & WELLBEING**

***PATIENT TRANSPORT**

***LOCAL SERVICES**

***ADVANCED CARE PLAN**

***INDEPENDENT LIVING**

***ACTIVE LIFESTYLES**

**10.30AM-12PM THURSDAY 7TH AUGUST
WELSHPOOL COMMUNITY TRANSACTION CENTRE
MORNING TEA PROVIDED**



**South
Gippsland
Hospital**

Adaptability.
Trust.
Excellence.
Accountability.
Mutual respect.

RSVP:  **5683 9777**

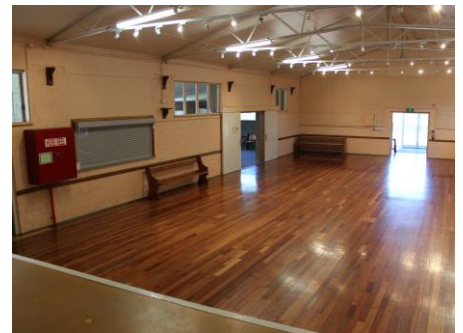


Reception@sghs.com.au

Welshpool Memorial Hall

49 Main Street

Welshpool Vic 3966



Our community Memorial Hall is available for hire.

For all enquiries, please contact the Welshpool RTC on 5688 1087
or call in to 14 Main Street Welshpool

Full Hall Hire

Includes: Use of all facilities including Kitchen \$180

Use of Heating & Cooling \$20

Supper Room Hire

Includes: Use of Kitchen and Supper Room \$90

Use of Heating & Cooling \$20

PORT WELSHPOOL & DISTRICT MARITIME MUSEUM

PETERSONS KNIFE FACTORY OF PORT WELSHPOOL

This story had its beginning many years ago at the Guild Knife Show held in Melbourne. George Nisselle, otherwise known as “Mr. Pocketknife” and a well-known face on the Australian gun and knife show circuit, handed me a box of edged Aussie made artefacts. He’s good that way, gathering old knives for me- trade blade ware mainly – because he knows I collect them and write about Australian knife history.

Most of the items in the box George passed over weren’t very valuable and wouldn’t attract the attention of serious knife collectors, but to me they are precious fragments of bygone era of knife manufacturing in this country. I happily rummaged through the items checking out the trademarks and styles. We cut a deal, and I tucked the box under my arm. Thanks George.

In the box of goodies, 2 trade blades- a 13cm skinning knife with a timber grip and a 20cm butcher’s knife without a handle – trade stamped ‘Peterson Pt. Welshpool & Sydney’. The trademarks puzzled me. I had not seen it before. Finally, it gnawed at me so much that I tried to trace the origin of the trademarks.

Firstly, I set about finding out where Port Welshpool is located. I discovered it is on the south coast of Victoria adjacent to Wilson’s Promontory, the southernmost point of the continent.

I then rang the Victorian Police Department to find the nearest police station to Port Welshpool. My mum told me when I was a kid “If you want to know something son, ask a policeman. A policeman named Mal Heywood at the Toora cop shop was very helpful and directed me to the publican at the Welshpool Hotel. A bloke named Don Daff runs the pub, and he was likewise very helpful and duly directed me to John Woolley at Port Welshpool. Four phone calls and I hit the bullseye.

John subsequently put me on to a 76-yr old lifelong resident of the area, Frank Roberts. A fisherman for most of his life: Frank still fishes with his son Shane, who took over the business and now works it with his son. Three generations all in the same boat- that’s special.

Frank told me that about 60 yrs ago he worked for a couple of years with Peter Peterson at his Blacksmith factory in Port Welshpool. The foundations opposite the pub are still in evidence. He reckons Peterson was getting on a bit age wise in those days. Peterson’s blacksmithing equipment ended up at Coal Creek Historic Village at Korumburra about an hour’s drive away.

Peterson apparently came to Australia as a seaman from Scandinavia. He established a thriving business producing trade knives for fishermen and abattoir use and cultivating hoes and fern slashers. Peterson had contracts to sell his products via wholesalers in Melbourne and Sydney. In fact, the name of a wholesaler, Henry Berry & Co, is stamped on the butcher’s knife.

The quality of Peter Peterson’s blade ware was such, that he even made knives during WWII for Wilson’s Promontory military camp. These knives were perhaps sterile {unmarked for commando use overseas}. More information on them is sought, as well as additional information relating to sets of butchers and slaughterman’s knives. I can attest to the quality of the skinning and butcher’s knives in my possession, which I have sharpened, used and steeled use.

It is believed the firm ended its cycle of existence sometime in the 1960’s.

This article was printed in the Australian Shooter Magazine in 2002. Some of Peterson’s tools displayed at the Museum are from Peterson’s factory that once stood proudly on the corner of Turnbull & Townsend Streets Port Welshpool.

The Museum is closed for the Winter break. But... If you can shed more light on Peter Peterson and his knife factory with stories or photos so this piece of history is not lost as the Port develops further: as we making sure history is kept alive for future generations, just call Janet 0413199776

SNAP SEND SOLVE

-SNAP - Have you spotted an issue around town?

Snap to help have it fixed.

-SEND – Send a report on the spot.

-SOLVE – We'll get it to the right place so it can be solved.

DOWNLOAD THE APP TODAY

How can we help?

For information and assistance:

- 9 Smith Street, Leongatha VIC 3953
- 5662 9200
- council@southgippsland.vic.gov.au
- www.southgippsland.vic.gov.au
- Facebook: [southgippslandshirecouncil](https://www.facebook.com/southgippslandshirecouncil)



**Snap
Send
Solve**

Did you know that you can report something that needs fixing via Snap, Send, Solve?

Simply download the app from the App Store or Google Play and start reporting

Annual 3-Day Tournament

Port Welshpool & District Bowling Club

Community Bank
Toora & Foster

Bendigo Bank

2025

Sunday 28th December - 3 Bowl Triples.

Monday 29th December - Fours. (Dinner available on Monday)

Tuesday 30th December - 3 Bowl Triples.

\$10 PER PLAYER. 10:00 AM START.

LUNCH SANDWICHES - MADE TO ORDER

RSVP: Errol Gregory 0417133271

portwelshpoolbc@gmail.com

Segway Navimow

Available in store now

**E.W. & H.P. FOWLER
WELSHPOOL OUTDOORS
& ORIGIN GAS SUPPLIES**

19 MAIN STREET
WELSHPOOL VIC 3966

PH: 0356881304

welshpooloutdoors@bigpond.com



Smart App Control

In the Navimow app, you can find everything you need, from interactive guidance and personalized settings to status update and service extension.



Set and Adjust
Mowing Area



Check Real-time
Mower Status



Adjust Mowing
Schedule



Set an Anti-theft
Alarm



OTA Updates

Songs, rhymes, stories and play at Welshpool Primary School with Myli Libraries.

For more information call 56821735



A free, fun
session to be
held each month.
2pm start.

Wed March 19	Wed Aug 20
Wed April 30	Wed Sept 17
Wed May 14	Wed Oct 15
Wed June 18	Wed Nov 12
Wed July 23	Wed Dec 10

Play based learning with an
opportunity to connect with
others and join Myli Libraries

For bookings scan this QR
code or go to
myli.au/events



South Gippsland Go Girls Program 2025



Women Helping Women



Do you want to feel empowered?
Do you want to take control of your future?
Together, with your new friends, let's discover your dreams

You can be part of a fully funded, women's only program based in
Bass Coast/South Gippsland area

All meals and transport are provided
In a safe environment, explore your future and plan ahead
Women of all ages are welcome

Information Session: Friday, August 29th 2025

Wonthaggi Library at 10:00AM & 1:30PM
Murray St, Wonthaggi VIC 3995

To find out more or to register for the program call or email:
Michelle Maughan on 0401 993 541 | michelle@gogirls.org.au

LIVE MUSIC AT THE RUSTY GURNARD

Saturday 9 August ~ 2-5 PM



CROWN JULES

QUILL & SHIELD PRESENTS
DUNGEONS & DRAGONS
@THE REGENT THEATRE
1pm-5pm ALL AGES
5:30-10pm Over 18s

FREE!

BOOK NOW

WELSHPOOL HOTEL PROUDLY PRESENTS

GYPSY
THE AUSTRALIAN
FLEETWOOD MAC
TRIBUTE SHOW

"BIG LOVE 2025 TOUR"

SUNDAY 17TH AUG

BOOK NOW - SHOW WILL SELL OUT

**JBN
CAR CLEANING**



0428683533

service list

Exterior Clean

Interior Clean

Basic to Ultimate Options

Sedans, Wagons, SUV, 4WD.

Utes

Gift Vouchers Available

Price List Available

Servicing Yarram to Fish Creek

Friday, Saturday or Sunday

Welshpool Supermarket & Café

Pies, pasties, sandwiches & salads
home-made slices & muffins.
Hot & cold drinks & more

TRADING HOURS

Monday – Friday 7am to 3:30pm

Saturday 9am to 2pm

CLOSED SUNDAY



**Driving
Miss Daisy®**
We're There For You

Alice Filon

Independent Franchise Owner
Gippsland

**For Enquiries & Bookings
Call: 0492 122 024**

E: gippsland@drivingmissdaisy.com.au



www.drivingmissdaisy.com.au

Companion driving for: Medical appointments,
Hairdresser, Shopping, Scenic drives, Airport/rail/bus
transfer, Pets to vet, School & children's activities

Danny O'BRIEN MP
Member for Gippsland South

54B Cunninghame St, Sale VIC 3853

03 5144 1987

danny.obrien@parliament.vic.gov.au

www.dannyobrienmp.com.au

Working for Gippsland South

[f](#) [t](#) [i](#) /dannyobrienmp

THE NATIONALS for Regional Victoria



**Today's 3 year olds
can switch on laptops and
open their favorite apps**



**Me? When I was 3,
I ate mud**

WELSHPOOL CEMETERY TRUST

CHAIRPERSON

DAVID GRILLS

0428 858 961

FOSTER SEAFOODS



35 Main Street, Foster

Ph: (03) 5682 2815

With catches of Inlet fish arriving within the shop on a
daily basis and our vessels returning from extended trips
into Bass Strait, you can be assured that the quality is
second to none.

We also have an extensive list of products with very
competitive prices.

Port Welshpool and District Bowling Club

Contact Angela Tisler 0448440153

portwelshpoolbc@gmail.com

22 Bowling Club Rd

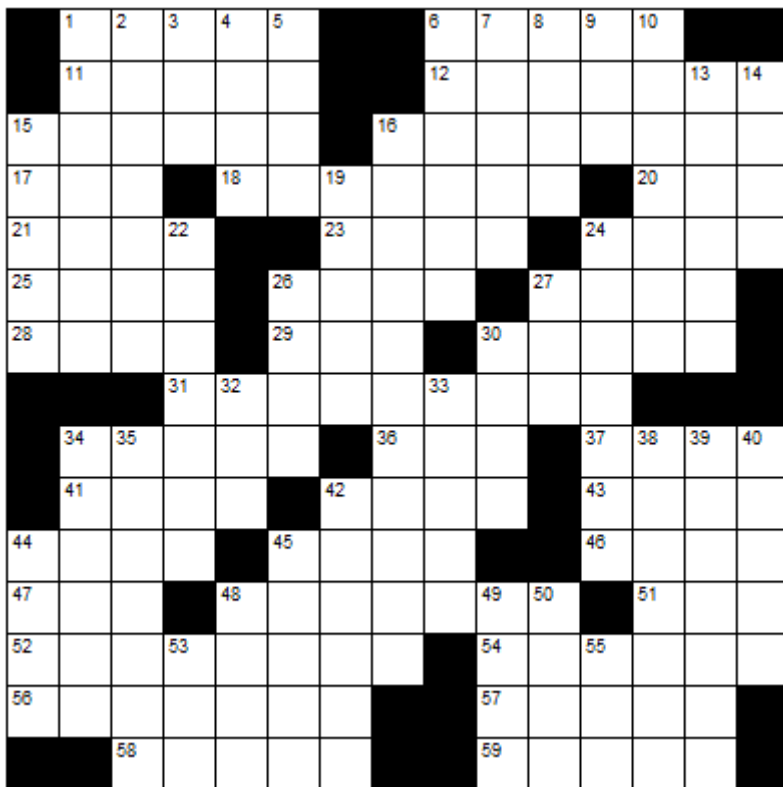
(Right of the Long Jetty along the foreshore)
Social and Barefoot Bowls Fridays during the
bowls season (Oct - end of April) from
4:30pm.

Bowls provided.

Bar service available. BBQ & Salad dinners
available most weeks at 6:30pm

**NEW MEMBERS AND BOWLERS MOST
WELCOME**

CROSSWORD



Down

1. College life
2. Gangster
3. Sash
4. Fertilizer component
5. Coarse file
6. Shrink in fear
7. Absorbs written material
8. Charity
9. Tiny
10. Trellis
13. Boil
14. Ages
15. Maestro's wand
16. Impassively saying
19. Former
22. Lengthwise
24. Elongate
26. Agile
27. Frozen water
30. Cease
32. Air hero
33. Approaches
34. Reliquary
35. Swooped
38. Wandering
39. Huge
40. Adhesive
42. Miserly
44. Impact sound
45. Holy person
48. Sand
49. Cobras
50. Harvard rival
53. French for "Friend"
55. Young boy

Across

1. Illicit sexual relationship
6. Go on all fours
11. Deadly snake
12. Let go
15. Infants
16. Width of a circle
17. Commercials
18. Adds on
20. Darjeeling or oolong
21. French for "Head"
23. Tatters
24. Seats oneself
25. Portent
26. Adjacent
27. Skin irritation
28. Geek
29. Music genre
30. Landslide detritus
31. Guarantee
34. Piquant
36. Modern
37. Voyage
41. Tube
42. Break in two
43. Deep sleep
44. Not false
45. Arouse
46. Gammons
47. Hebrew liquid measure
48. Deny
51. Encountered
52. Thoughtless
54. Containing salt
56. Considering
57. Schemes
58. Simple song
59. Marsh plant



Winning entry will receive a free coffee and cake from the Welshpool Café & Supermarket



LAST MONTHS CROSSWORD RESULT

T	O	U	R		E	R	A	S	E		K	A	P	H
U	G	L	Y		S	A	L	T	S		A	B	L	E
L	I	C	E	N	T	I	O	U	S		O	D	O	R
E	V	E		O	R	D	E	R		F	L	U	T	E
S	E	R	I	O	U	S		D	A	R	I	C		
			A	S	S		S	I	L	E	N	T	L	Y
T	H	E	M	E		C	L	E	A	T		I	I	I
W	O	M	B		D	O	U	S	E		P	O	M	P
I	M	P		T	A	U	N	T		C	A	N	O	E
T	E	A	C	H	I	N	G		C	O	P			
			T	R	U	S	T		L	O	V	A	B	L
A	C	H	E	S		D	E	A	V	E		R	I	G
G	A	I	N		B	O	R	D	E	R	L	I	N	E
A	D	Z	E		O	W	N	E	R		I	D	E	S
R	E	E	L		A	N	E	N	T		V	E	R	T

Sponsored by: **Welshpool Supermarket**

Entries must be received before
15th Aug

All correct entries will be put into a hat and the winner will be drawn by Supermarket staff. No correspondence will be entered into etc.

Please remember to double-check your spelling.

Remember to include your name, contact number and date on your returned entry, Thank you.

Winner of the June Crossword:

Mary Moore



Carpet Bowls

Old Ferry Terminal, Port Welshpool
Come along for a fun afternoon of
Carpet Bowls

No membership
or equipment required,
everything is supplied for you.

Every Tuesday afternoon:

1pm sharp

\$5 per session plus a small plate for
afternoon tea.

Everyone welcome!

Contact Alma 0427310599

or Lyn 0409995891



Looking for Exercise?

Easy, Casual, Friendly

Welshpool Memorial Hall

Wednesdays 6:30-8:30pm

All Equipment Supplied, All Levels Welcome

\$2 / player / time. Ask JJ on 0400 114 905

for more details



LOCAL SERVICES.....

How can we help?

For information and assistance:


- 9 Smith Street, Leongatha VIC 3953
- 5662 9200
- council@southgippsland.vic.gov.au
- www.southgippsland.vic.gov.au
- Facebook: southgippslandshirecouncil



**Snap
Send
Solve**

Did you know that you can report something that needs fixing via Snap, Send, Solve?

Simply download the app from the App Store or Google Play and start reporting



AAC MOBILE AUTO AIR CONDITIONING
Maintenance & Repairs to...
TRUCKS • TRACTORS • MACHINERY • PASSENGER & FOOD TRANSPORT VEHICLES
Ian Dubignon **M. 0448 761 642**
aacautoair.com.au

WELSHPOOL CRANES

0428 171 666

Mobile Crane
Dogmen
Piggers

Gary Mason

info@gmmason.com.au



THROCKMORTON SERVICES PTY LTD
**BUILDING MAINTENANCE
& CARPENTRY**

Email: throckmorton@bigpond.com

Mb: 0417 582 918

ABN 72 875 167 020



John Hoy
Trade qualified Farrier
(25 years experience)

0447 229 390

ALBERTON TIMBER



& TREATMENT PLANT P/L

FOR ALL YOUR TREATED PINE NEEDS

POSTS SAWN TIMBER DECKING CUSTOM TREATING

SLEEPERS NUTS AND BOLTS PALINGS AND MORE

SOUTH GIPPSLAND HIGHWAY, ALBERTON, VIC, 3971

Ph (03) 5183 2437

Fax (03) 5183 2659

Email sales@albertontimber.com.au



CONCRETER

Delivering Quality Concrete Services for
Residential, Commercial & Farm Upgrades.

CALL KANE
TODAY FOR A
FREE ON-SITE
CONSULTATION

5613 2013 | 0400 840 729

E: admin@sgconcrete.com.au

W: www.sgconcrete.com.au

TV DATA PHONE

Digital Antennas, Masts, Repairs. TV Wall Mounts, Speakers, Home Theatre & Hidden Wiring. WIFI. Cameras & Security Systems. Phone & Computer Outlets. Networks. Satellite Dish and Receivers, VAST and StarLink. Mobile B.B. Antennas. Test and Tagging.

Licensed Cable & Security Installer
Domestic, Commercial & Industrial
Steve Mooney 0427 257 222

IF YOU
Believe
IN YOURSELF
Anything
IS POSSIBLE

Kirwan Builders

TK Construction

"for all your building needs"

TK Construction - Michael Kirwan

6565 South Gippsland Highway HEDLEY VIC 3967

P: 03 5184 1223 | M: 0428 911 900

E: kirwanbuilders@gmail.com

HIA MEMBERSHIP: 813 711 | DB-U: 20399 | A.B.N: 40 896 158 242

Gatt's Tile Roof Restorations

We cater for everything roofing

- Pressure washing -Roof painting
- Repointing tile roofs -Install gutter guard
- Replace broken tiles -Repair leaks.

-External high pressure washing of:

- *Houses *Buildings
- *Driveways *Gutters



Port Welshpool workshop

Morwell workshop

Please phone 0434 725 536

All work is done by tradesmen

Fully insured and WorkSafe approved.



Port Welshpool & District Museum



The building that houses the collection was designed and built by John Avery in 1881 for W.B.M. Smith. Being the first large home in the village, it became the unofficial community centre, conducting dances, weddings, church services and even a wine salon.

ADMISSION CHARGES

Adults	\$5
Pensioner	\$4
Student	\$2
Family	\$10

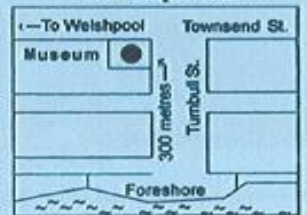
Opening Hours 12.30pm - 3.30pm
Sat, Sun, Public Holidays
and by Appointment.

or call the Museum Secretary
Janet Taylor 0413 199 776

Website - ptwelshpoolmuseum.wixsite.com/pw-museum

Group visits are welcomed.

Cnr. Townsend & Turnbull Streets
Port Welshpool 3965



If you see someone
without a smile, give
them one of yours.

DOLLY PARTON

ANTHONY BRAVINGTON

Cleaning & Property Maintenance Contractor

- Commercial Cleaning, Domestic Cleaning and all types of Property Maintenance
- Accommodation Contracts
- Office Building Contracts
- Retail Shops Contracts
- School Cleaning Contracts
- Builders Cleans
- All Property Maintenance etc
- Window Cleaning
- Carpet Steam Cleaning



THURSDAYS & FRIDAYS ONLY

1 bedroom house	\$70
2 bedroom house	\$90
3 bedroom house	\$120
4 bedroom house	\$150

Call Anthony for all your cleaning needs

Mobile: 0418 146 986

Email: bravtecleaning@gmail.com

RON LEACH

CALF BUYING

Mondays & Thursdays

Top Prices

Also buying friesland heifers
& other small beef stock

Call 0429 881 464

Chicken and Leek Pie

Ingredients

- 1 tbsp olive oil
- 800g Chicken
Thigh Skinless Fillets, cut into 2cm pieces
- 20g butter
- 2 leeks, thinly sliced
- 1/2 cup (125ml) dry white wine
- 2 tbsp plain flour
- 1 tbsp Dijon mustard
- 1 cup (250ml) chicken stock
- 2 spring onions, thinly sliced
- 2 tbsp sour cream
- 2 sheets frozen puff pastry, just thawed
- 1 Egg, lightly whisked

Step 1

Preheat oven to 200C. Heat oil a frying pan over high heat.

Season chicken and cook, in batches, for 5 mins or until browned. Transfer to a plate

Step 2

Melt butter in same pan. Cook leek for 3 mins or until tender. Return chicken to pan with the wine. Simmer, uncovered, for 7 mins or until wine has almost evaporated. Sprinkle over flour. Cook, stirring, for 1 min. Stir in mustard, stock and spring onion. Bring to a simmer. Simmer, partially covered, for 5 mins or until thickened. Stir in sour cream. Season. Set aside for 15 mins to cool.

Step 3

Divide chicken mixture among four 1 1/2-cup (375ml) capacity ramekins. Cut 4 discs from pastry to cover top of pie dishes. Place pastry discs over chicken mixture, pressing down edges to seal. Brush pastry with egg. Bake for 20 mins or until pastry is puffed and golden. Serve with mixed salad leaves.



The Month Of August

BIRTH STONE



PERIDOT

BIRTH FLOWER



GLADIOLUS / POPPY

STAR SIGNS



LEO & VIRGO

Did you know...

- August was named in honor of **Augustus Caesar**. It has 31 days because he wanted as many days as Julius Caesar's month of July had.
- 1981 - **MTV network** debuted on cable television in the USA, actually playing music videos 24 hours a day.
- **The Great Train Robbery** was the robbery of £2.6 million from a Royal Mail train heading from Glasgow to London in the early hours of 8 August 1963.

Personality

August babies are either Leos or Virgos, and there's a lot to like about people born under both of those signs. They tend to be strong, confident and organised. They make naturally strong leaders, because of their charisma and confidence.

Special Days



02 AUGUST

International
Beer Day



12 AUGUST

International
Youth Day



13 AUGUST

International
Lefthander's Day



25 AUGUST

Nottingham
Carnival

Famous August Birthdays

Michael Jackson, Whitney Houston, Barack Obama, Bill Clinton, Halle Berry, Steve Martin, Jack Black, Taika Waititi, James Gunn, Louis Armstrong, Mila Kunis, Jennifer Lawrence, Demi Lovato & Luis Guzmán.



			2	6		7		1
6	8			7			9	
1	9				4	5		
8	2		1				4	
			4	6		2	9	
	5				3		2	8
		9	3				7	4
	4			5			3	6
7		3		1	8			