

ANZAC Day 2023

The Welshpool ANZAC Day Service was held at 9.30am and was attended by a large crowd. The service was conducted by Rod Coughran-Lane from the Friends of Toora RSL Sub Branch, as well as representatives from the School of Air Traffic Control from the Sale RAAF Base. The service was followed by morning tea at the Welshpool Hall.



Disclaimer

This newsletter is an independent self-funded publication produced by staff and volunteers of the RTC and it does not reflect the opinions of the Committee members, South Gippsland Shire, or the Department of Planning and Community Development.



TRADING HOURS
 MON - FRI
 10.00AM - 3.00PM
 PHONE 5688 1087

- WELSHPOOL COMMUNITY LIBRARY
- BENDIGO BANK AGENCY
- SERVICES AUSTRALIA AGENCY
- V/LINE TICKETING OFFICE
- ROOM HIRE AVAILABLE
- PASSPORT APPLICATIONS
- COPY & PRINT SERVICES
- BISLEY WORKWEAR

Other services by appointment only

- Gibson Accounting – 5176 2031



We're closer than you think

Our Agents can help you connect with Centrelink, Medicare and other government programs and services.

Australian Government Services Australia Agents have free self service facilities. They also have staff who can help you.

At our Agents you can:

- use our computer to access my.gov.au and other government programs and services and to search for jobs
- use the telephone to access our self service options or to speak to us
- access free Wi-Fi 24/7 to connect to government services. No password required
- scan, fax and photocopy documents
- have your confirmation of identity documents certified
- lodge forms, print information and pick up brochures.

YOUR LOCAL AGENT IS:

Welshpool Rural Transaction Centre
 14 Main Street
 Welshpool Vic 3966



VLIN BUS SERVICES

Purchase tickets at the
 Rural Transaction Centre or
 collect a VLINE Bus Timetable



The \$250 Power Saving Bonus
 for Victorian households is
 now open.

<https://compare.energy.vic.gov.au/>



Gibson Accounting

PH: (03) 5176 2031

Fax: (03) 5174 6313

101 Hotham Street
 Traralgon, Vic 3844

Email: kieran@gibsonaccounting.com.au

Kieran Olree

Kieran Olree is at the RTC every Wednesday

By appointment only - **(03) 5176 2031**

For more information and all the latest tax
 updates and handy hints for tax time,
 please visit Gibson's website:

www.gibsonaccounting.com.au

WELSHPOOL OP SHOP NEWS

The Op shop has a new phone number! It is 0417 367 629

The Welshpool Op shop is seeking a volunteer who would be willing to mow and whipper snip the back yard of the Op shop as needed.

If you would be interested in donating some time and be an appreciated volunteer please speak to Di Casey at the Op shop or staff at the RTC next door to the Op shop.

Alternatively, you could ring the Op shop on their new mobile number for more information.



Thank You

Thank you to members of the Welshpool Fire Brigade for pressure washing the Welshpool rotunda and painting over the graffiti. Your continued service to our community is invaluable.



Introducing fairer regional fares for Victoria

Enjoy the ride for less



For all ticket enquiries and purchases call in to the Welshpool RTC

Monday to Friday
10am to 3pm

Travelling to and from regional Victoria has never been more affordable

Starting 31 March 2023, no matter where you live in Victoria, it will cost you the same amount to travel. The most you'll pay is the same as a daily capped fare, which is currently \$9.20 or \$4.60 for concession.

For shorter regional trips, it will be even less.

And with weekend saver discounts, travel on Victoria's regional network on weekends and public holidays, and your daily fare will currently only be \$6.70 or \$3.35 concession.



Casual Hoodie jumpers in stock now
Available in Black, Navy and Grey
Only \$49.50

Call in to the RTC
14 Main St Welshpool
5688 1087



The Welshpool Agency hours remain as
Monday to Friday 10am to 3pm

Please note our new phone number
5688 1087

Myli - My Community Library



Are you a member of Myli – My Community Library? (Formally known as the West Gippsland Libraries). Join today at the Rural Transaction Centre and have access to a variety of books, audio books, DVD's and more. If it's not on the shelf it can be ordered in. Open Monday to Friday 10am to 3pm. A Librarian also attends every Wednesday 12noon to 2pm for any assistance required.



RTC Room for Hire
Office Hire: \$11 per hour
\$33 per day

Better banking. Big impact.

It's a win-win when you bank with us.

Community Banks returns profits to the people and communities that generate them.

So your banking becomes part of something much bigger. And much better.

Last year it was helmets for the Stingrays Football Club. This year it's providing a drivers safety program for our local youth.

Find out more. Search Bendigo Bank near me.

 Toora 5686 2000 · Welshpool 5688 1087



Community Bank
Toora and Welshpool

Welshpool Op Shop & Nursery

Monday to Friday

Ph: 0417 367 629

10am – 4pm

Saturday 10am – 2pm



EFTPOS now available



WELSHPOOL OP SHOP

Grab a Bargain!

Fill a basket of clothing for \$3

All ladies, men's and children's clothes.



Shopping for Mother's Day

Thank you to the children of Welshpool & District Primary School for shopping local and joining us at the Welshpool Op Shop for your Mother's Day shopping. It was wonderful to see all the smiling faces excited about what to buy for the special people in their lives.

We hope all of the recipients of the gifts enjoyed them and we hope you all had a lovely Mother's Day.

Australia's Biggest Morning Tea

Celebrating
30 years!

Every dollar raised helps support those impacted by cancer.

When: Tuesday 11th July
Where: Welshpool Op Shop
Time: 10am
Details: \$10 lunch

Come along and enjoy some beautiful home cooked food, great company, have some fun and help raise money for cancer

biggestmorningtea.com.au



WANT TO STAY IN THE KNOW?

In The Know is your fortnightly reminder of what Council is up to at the moment. Have a look at what is going on and how you can get involved!

Do you know someone who might want more information on what Council is up to? Be sure to send this message on and have them [register](#) for a copy or share it on your socials!



WINTER HAS ARRIVED

COZY
BLANKET ✓

CUDDLE
PARTNER ✓



Welshpool & District Primary School

District Athletics



Well done to the students who represented our school at the district athletics last Friday. We had great numbers qualify this year and everyone should be proud of their achievements. A special congratulations goes out to Carlee who won the 800 and 1500 metres, Dylan who won high jump, and Clarydel who won shotput. These students will be advancing to the regional athletics later in the year.

Mr Moore



**2024 Kindergarten Registration
NOW OPEN**



South Gippsland Shire Council

May 1 at 12:00 PM · 🌐

🔔 Three-year-old and four-year-old kindergarten registration for 2024 is now open.

Kindergarten registration is centralised through Council. Simply complete the form and nominate your kindergarten preferences.

📅 Registrations must be lodged by 30 June to receive a first-round offer.

📞 For more information, please phone 5662 9200.

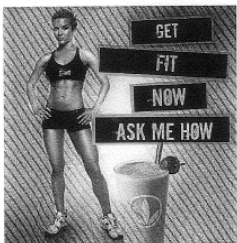
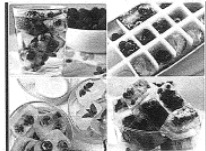
📄 To register go to: <https://www.southgippsland.vic.gov.au/centralenrolment>

SHAKE PARTY

Please join us to sample our wonderful products and discover the keys to optimal health and anti-aging nutrition.

FREE Nutritional Smoothies & Fat Burning Energy Beverage
FREE Healthy choc protein bars/protein balls
FREE Wellness & Weight Management Information
(Lose/ gain weight; energy, fitness/sports, health challenges)
FREE Entry and Lucky Door Prize

We look forward to having you join us.
 Bring a friend
 Children Welcome



Random Door Prizes On the Day

Date: 04/06/23
 Time: 1-3pm
 At :
 Welshpool Memorial Hall
 49 Main st
 Welshpool
 Vic 3966

Please R.S.V.P. by 1/06/23 to Cath 0407506598

PORT WELSHPOOL COMMUNITY MEMBERS – WE WANT YOUR VOTE!

The Port Welshpool Community has identified four projects to include in the Port Welshpool Community Plan. The Port Welshpool Working Group would now like to know which of the following projects would be the most important to you.

- Access to foreshore footpath across road verge
- Lewis Street Lighting
- Seating along foreshore
- Public Toilets at the Long Jetty

Voting forms will be coming to your post box, or be available at the Port Welshpool Store in the coming weeks. Please be sure to vote, and let us know if you want to be part of the team to get these projects happening.



WELSHPOOL POST OFFICE

20 Main Street Welshpool Phone: 5688 1419

Email: welshpoolpostal@bigpond.com



Unlocked Samsung Handsets New Models Available Now.

A04s \$329, A14 5G \$379, A34 5G \$599, A54 5G \$699



Find us on
Facebook

Port Welshpool & District Maritime Museum

As the years roll on, we sadly say good bye to some that have lived in the community and became part of our day to day lives, like Jim Bown to name one, who as I remember him was the high school bus driver, also having beehives with the best honey. Originally living with his family on the foreshore but due to erosion had to shift their home to Stewart St, where it still proudly stands with all its history.

As we look back through the archives we read the following from "The Foster Mirror, Thurs 15th July 1948." The photo is not of the night concerned but is of the flying fox mentioned in transferring the patient. We do not know the occupants in the photo but would love to know.

"Fishermen Brave Gails. To Bring Sick Woman To Hospital"

In the face of raging seas driven before a westerly gale, Mr. Jim Bown, of Port Welshpool, took his 50-ft cray fishing boat out into Bass Strait on Wednesday night last to meet the lighthouse supply ship, the Cape York, which had on board Mrs. Simpkins, the sick wife of the assistant light keeper at Wilson's Promontory. Mrs. Simpkins had been ill for a week or more and when the supply ship arrived at the Promontory it was decided, in view of the sick woman's condition, to try and get her to hospital. The 'flying Fox' was used to transfer the patient from the landing wharf to the vessel.

Mr. Arthur Lundstrom, at Port Welshpool, was then telephoned to arrange for a boat to come out and meet the Cape York.

The only vessel available was Mr. Jim Bown's boat and within a quarter of an hour he was on his way! This was at 4.45pm.

With him were Mr. Len Busk and Mrs. J Robertson jnr, who went to take care of the sick woman. The vessels made contact near Sealer's Cove and Mrs. Simpkins was safely taken aboard. At the juncture the two-way radio transmitters with which practically all the ships of the crayfishing fleet are equipped, proved valuable.

Nightmare Trip To Port

Although the batteries of his set were weak, Mr Bown was able to talk to Mr. Chas Norling, who was sheltering with his boat a mile or two away in Refuge Cove. He relayed the message to another boat anchored at Port Welshpool advising of Mrs. Simpkin's condition and that Mr. Bown expected to make

port in about two hours - 10.30pm.

Insufficient Navigation Lights

This he did but only after a nightmare trip. It was pitched dark and Mr Bown declares he can't remember worse seas. He had to run into the face of a howling westerly to re-enter Corner Inlet. A sheet of water continually broke over the ship and totally inadequate port navigation lights could only be seen at infrequent intervals. Mr Bown was compelled to hook up his batteries and with the use of a powerful spotlight which he focused on shore, was able to estimate his position and safely enter the more protected waters of Port Welshpool. Upon arrival at the pier Dr. Schultze, of Toora [who is relieving Dr. Skinn] was waiting with his car to take Mrs. Simpkins to hospital. Her condition is said to be satisfactory."



Welshpool Table Tennis

On behalf of the Welshpool Table Tennis group and the wider community we would like to thank the Bendigo Community Bank for their generous grant funding. These funds allowed the group to purchase a second table. We are now able to run two tables simultaneously which allows more players to be actively playing.

For those community members interested in joining us, no experience is needed. We are a casual group playing a friendly social hit of table tennis. We supply all of the equipment required.

We meet every Wednesday night 6.30 – 8.30pm. Come along or call JJ on 0400114905 for all enquiries.



Port Welshpool Working Group

Volunteers from the Port Welshpool Working Group and the Port Welshpool Coast Guard have completed the refurbishment of the two tennis courts at Port Welshpool to enable the locals and visitors to enjoy a social game of tennis.

The PWWG have supplied a cabinet with racquets and balls for anyone to use. There is no cost, but all we ask is that you kindly respect the equipment and facilities.

The work to refurbish the two courts consisted of pressure cleaning the concrete surfaces, filling the cracks with flexible sealer, marking out and painting the lines, installing new nets and general clean-up of the area.

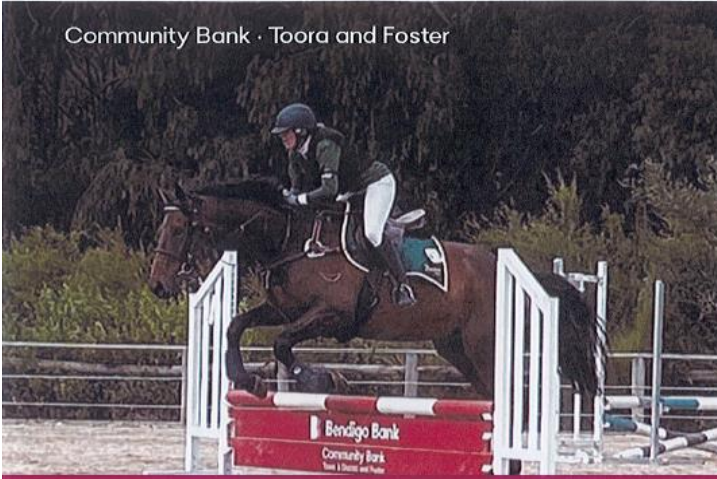
The PWWG would like to thank the South Gippsland Shire for a grant of \$1000-00 towards the purchase of materials and the new nets.

The PWWG would also like to thank all the volunteers who helped in this project, but also give a special thanks to Robin Street and Angela Tisler who carried out many of the tasks involved in completing this community project.

We hope that many folks will be able to enjoy this facility.



Community Bank · Toora and Foster



Supporting your community Sponsorship Program Now Open

When you choose to bank with Bendigo Bank, good things happen in your community.

Find out more. Call 03 5686 2000 or search Bendigo Bank Toora, and request a sponsorship application form today, email admin@pdfg.org.au
Program Opens 1 May 2023, Closes 30 May 2023..
bendigobank.com.au

Bendigo Bank

Bendigo and Adelaide Bank Limited AEN 11 068 049 178, AFSL/Australian Credit Licence 239793/1381193, OUT_2085416, 30142023

Welshpool Golf

Welshpool Golf Club Results. Perfect weather, no wind, no rain, no excuses.

Fri 12th Chook Run Won by B. Mitchell on 19pts, R/U R. Barwick & R. Knowles on 17pts.

Sat 13th 18 hole Stableford won by R. Barwick on 34 pts, R/U A. Ditta on 31pts. Ntp L. Pope 6th.

Sun 14th 9 hole Stableford won by P. Barlow 20 pts, R/U B. Mitchell 19 pts. Ntp P. Delaney 6th & B. Mitchell 8th.



E.W. & H.P. FOWLER WELSHPOOL OUTDOORS & ORIGIN GAS SUPPLIES

19 MAIN STREET
WELSHPOOL VIC 3966
PH: 0356881304

EMAIL: welshpooloutdoors@bigpond.com



Available in store NOW



ATV TRAILER SINGLE AXLE TIPPING

GCV-1600A-AU

RRP: \$1099.00

Tough and rugged steel construction
1-piece heavy-duty welded bed
Heavy-duty 1400mm x 760mm steel mesh bed
725kg hauling capacity, perfect for use around the garden or yard
18-in. tires are designed to tackle any terrain
Extra tall removable sides and 3-in-1 tailgate for added versatility when carrying larger load
Heavy-duty foot pedal dump latch
Chainsaw holder and long-handled tool holders included
Trailer coupler adapter included

ATV TRAILER DUAL AXLE

GCU-1600-AU

RRP: \$1799.00

Superior steel construction
Huge, heavy-duty 1525mm x 760mm oversized steel mesh bed
725kg hauling capacity, perfect tool for use around the yard or farm
Dual 18-in tires are designed to tackle any terrain
Easy to manoeuvre with pivoting rear axle
Removable sides and fold-down tailgate for Dual chainsaw holders and long-handled tool holders included. Grease nipples on wheel hubs and axle pivot.
Trailer coupler adapter included



Welshpool Supermarket & Café

Pies, pasties, sandwiches & salads
home-made slices & muffins.
Hot & cold drinks & more



Monday – Friday 7am to 4pm
Saturday 9am to 3pm
CLOSED SUNDAY

Now also stocking your morning papers

WELSHPOOL CEMETERY TRUST

CHAIRPERSON

DAVID GRYLLES

0428 858 961

SECRETARY

GARY PALMER

0493 061 494



Driving
Miss Daisy®
We're There For You

Alice Filon

Independent Franchise Owner
Gippsland

For Enquiries & Bookings
Call: 0492 122 024

E: gippsland@drivingmissdaisy.com.au



www.drivingmissdaisy.com.au

Companion driving for: Medical appointments,
Hairdresser, Shopping, Scenic drives, Airport/rail/bus
transfer, Pets to vet, School & children's activities

Danny O'BRIEN MP

Member for Gippsland South

54B Cunninghame St, Sale VIC 3853
03 5144 1987
danny.obrien@parliament.vic.gov.au
www.dannyobrienmp.com.au



Working for Gippsland South

[f](#) [t](#) [i](#) /dannyobrienmp

THE NATIONALS for Regional Victoria

FOSTER SEAFOODS



35 Main Street, Foster
Ph: (03) 5682 2815

With catches of Inlet fish arriving within the shop on a daily basis and our vessels returning from extended trips into Bass Strait, you can be assured that the quality is second to none.

We also have an extensive list of products with very competitive prices.



**Bar & Bottle Shop Open Mon & Tues 4pm to 8pm
Wed to Sun from Midday**

Accommodation Available

Meals Available Eat In & Take Away

Monday – Friday 5pm – 8pm

Saturday Midday - 2pm and 5pm – 8pm

Sunday Midday – 2pm

Main Street Welshpool, Vic 3966

Contact: **Ph: (03) 56881309**

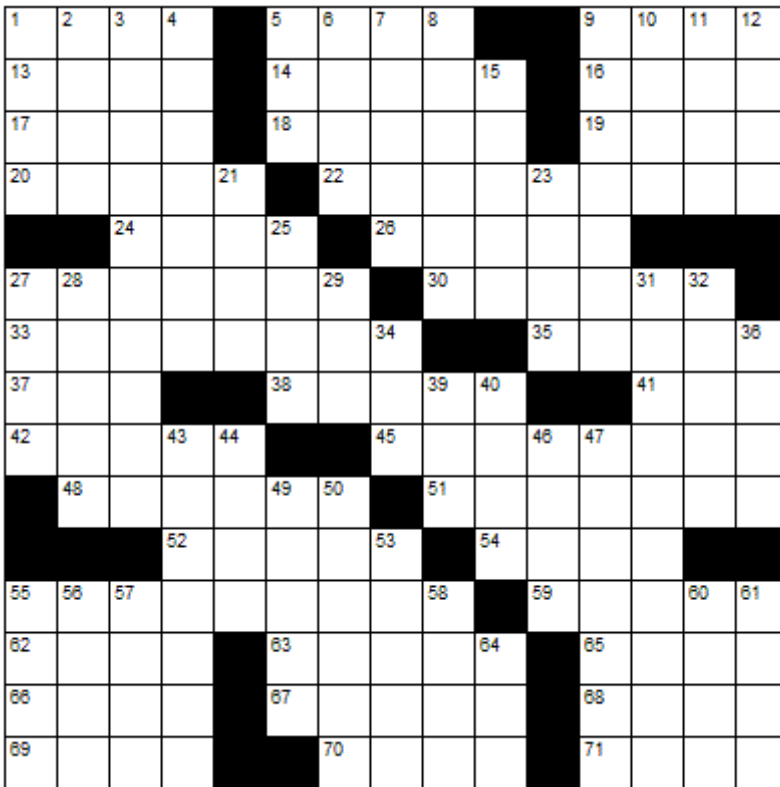


**"Act as if what
you do makes a
difference. It does."**

—WILLIAM JAMES

RS

CROSSWORD



Down

1. Intentions
2. Applaud
3. Up to now
4. Uttermost
5. Top
6. 1 1 1 1
7. Spheres
8. Bury
9. Frenzied
10. Shoestring
11. Coastal raptor
12. Elk or caribou
15. Keen
21. Letters and postcards
23. "Oh dear!"
25. Make a sweater
27. Exhaled hard
28. Hardship
29. East northeast
31. Characteristic of the theatre
32. The business of selling goods
34. Before, in poetry
36. Heredity unit
39. Unhappy
40. Greek goddess of discord
43. Emblem of power
44. Blue-green
46. Sounds of disapproval
47. Curative
49. Exhaust
50. French president's residence
53. Affirmatives
55. Not stereo
56. Footnote note
57. Storage site
58. Garb
60. Greek district
61. Biblical garden
64. East southeast

Across

- | | | |
|--------------------------|----------------------------|--------------------------|
| 1. Dull pain | 33. Rescue rope | 62. Death notice |
| 5. A rounded projection | 35. Thin person | 63. Put out |
| 9. Ran | 37. Bigheadedness | 65. Decorated, as a cake |
| 13. Holly | 38. Brusque | 66. Egyptian river |
| 14. Fatuous | 41. Beer | 67. Requires |
| 16. Scarce | 42. Most bad | 68. What we're called |
| 17. Shopping place | 45. Terrans | 69. Scent |
| 18. Triangular formation | 48. Ebb | 70. Being |
| 19. Skin disease | 51. Illness | 71. Secluded valley |
| 20. Kind of whale | 52. Not late | |
| 22. Adman | 54. Three-handed card game | |
| 24. Durable wood | 55. Played wrong | |
| 26. Refine | 59. Playground chute | |
| 27. One of the halogens | | |
| 30. Plaits | | |



Winning entry will receive a free coffee and cake from the Welshpool Café & Supermarket



LAST MONTHS CROSSWORD RESULT

S	E	N	D	S		P	U	M	P		C	A	R	S	
O	V	E	R	T		A	R	I	A		E	L	A	N	
A	E	R	I	E		R	I	L	L		L	I	I	I	
P	R	O	P	A	G	A	N	D	A		L	A	S	T	
					D	A	D	A		C	A	U	S	E	
B	A	R	F		M	O	T		E	L	L				
O	R	E	O		E	X	E	S		T	I	B	I	A	
S	U	N	R	I	S	E		E	G	O	T	I	S	M	
S	I	D	E	D		S	E	A	R		I	D	L	E	
				W	E	D		A	C	E		S	E	E	N
D	E	B	A	S		R	O	A	D						
A	V	E	R		F	A	N	A	T	I	C	I	S	M	
R	A	I	N		I	R	E	S		R	O	D	E	O	
E	D	G	E		N	E	S	T		T	R	E	E	S	
S	E	E	D		E	A	T	S		Y	E	A	S	T	

Sponsored by: **Welshpool Supermarket**

Entries must be received before
15th June, 2023

All correct entries will be put into a hat and the winner will be drawn by Supermarket staff. No correspondence will be entered into etc.

Please remember to double-check your spelling.

Remember to include your name, contact number and date on your returned entry, Thank you.

Winner of the April Crossword:

Michelle Christensen



WAFF Group

The members of the WAFF Group met again this month to put the final touches on the new Community Plan. We are very excited to have progressed so far within the twelve months since forming the group and look forward to presenting the plan to the community.

In the early stages of planning it was wonderful to have so much input from members of the community putting forward their ideas to improve our area. All of the ideas submitted have been included in the plan. By including all ideas, this gives us a wide picture of what community members are wanting and allows us to work on a number of projects at a time.

The list of projects is not in any given order and some ideas will be easier to achieve than others, however by including them all, this provides a clear picture of where we are now, where we can head to, and in time where we still need to go.

The group are already working on a few of the items on the plan as we speak and we look forward to keeping you up to date with our progress.

Once complete, the new Community Plan will be available for viewing at the Rural Transaction Centre. Stay tuned for more information in the near future.

Did you know about the "Snap Send Solve" app?
If you see something within the South Gippsland Shire that needs fixing – just "Snap Send Solve"
Download the app today

How can we help?

For information and assistance:

- 9 Smith Street, Leongatha VIC 3953
- 5662 9200
- council@southgippsland.vic.gov.au
- www.southgippsland.vic.gov.au
- Facebook: southgippslandshirecouncil



**Snap
Send
Solve**

Did you know that you can report something that needs fixing via Snap, Send, Solve?

Simply download the app from the App Store or Google Play and start reporting

Community Group Listing

- ***Welshpool & District Advisory Group** – Contact: Linda Razinger 03 5688 1087
- ***Welshpool Fire Brigade** – training every Thursday night 7.30pm
- ***Welshpool Recreation Reserve** – Contact: Madelaine Mason 0409 976 211
- ***Welshpool Basketball Association** – Contact: Madelaine Mason 0409 976 211
- ***Prom Coast Soccer Club** – <http://www.promcoastsoccerclub.com.au/>
Contact: Shellie Cashmore 0419 322 384
- ***Welshpool Memorial Hall** – Contact: Diane Bradford 0491 155 029
- ***Friends of Agnes Falls** – <https://www.facebook.com/FriendsOfAgnesFalls/>
- ***Port Welshpool Fishing Club** – Contact: Jenny Horner 0428 862 028
- ***Port Welshpool Working Group** – Contact: Alma Mattingley 0427 310 599
- ***Welshpool & District Playgroup** – <https://www.facebook.com/WelshpoolPlaygroup/>
- ***Welshpool & District Horticultural Society** – meeting every 2nd Wednesday of the month.
Contact: Tom Reakes Ph. 0429966002
- ***Port Welshpool & District Maritime Museum** – Email: pwmuseum@gmail.com
- ***Port Welshpool Coast Guard** – Contact: Robin Street 0401 142 470
- ***Welshpool Golf Club** – Contact: President Paul Delaney 0459965129 / Captain Russell Barwick 0427849846
- ***Welshpool Table Tennis** – Contact: JJ on 0400 114 905

LOCAL SERVICES.....



M & C Doran
Quality is our speciality

Michael Doran
Qualified Carpenter & Joiner

16 Turnbull Street
Port Welshpool VIC 3965
Email: buildingservices@mcdoran.com.au

Ph. 03 5688 1229
Mb. 0429 038 409
Fax. 03 5688 1377



AAC MOBILE
AUTO AIR
CONDITIONING

Maintenance & Repairs to...

TRUCKS * TRACTORS * MACHINERY * PASSENGER & FOOD TRANSPORT VEHICLES

Ian Dubignon **M. 0448 761 642**

aacautoair.com.au



John Hoy
Trade qualified Farrier
(25 years experience)

0447 229 390

Lawn mowing & Maintenance, Rubish removal, Painting
Window cleaning, Gutters cleaned, High presure washer

Lawn mowing & Maintenance
Free Quotes reasonable rates local tradesman



Dave Mcleish
Port Welshpool

0417 538 683

davemcleish@live.com.au

WELSHPOOL CRANES

0428 171 666

Mobile Crans
Dogmen
Piggers

Gary Mason
info@gmmason.com.au

ALBERTON TIMBER
& TREATMENT PLANT P/L

FOR ALL YOUR TREATED PINE NEEDS

POSTS SAWN TIMBER DECKING CUSTOM TREATING

SLEEPERS NUTS AND BOLTS PALINGS AND MORE

SOUTH GIPPSLAND HIGHWAY, ALBERTON, VIC, 3971
Ph (03) 5183 2437 Fax (03) 5183 2659 Email sales@albertontimber.com.au

CONCRETER



SOUTH GIPPSLAND CONCRETE
ALL THINGS CONCRETE
ON-SITE TIMBER MILLING

0400 840 729

WWW.SGCONCRETE.COM.AU

SOUTH GIPPSLAND
SEPTIC TANK CLEANING

Also Portable Toilets Hire

Call Chris Whittle
(03) 5688 1572



TV & DATA SYSTEMS

Digital Antennas, TV wall mounts, Data & Computer outlets, Home Theatre, Hidden Wiring, Networks, Offices, CCTV, Repairs, Equipment Installations

Licensed Cable Installer
Domestic, Commerical & Industrial

Steve Mooney 0427 257 222

Kirwan Builders

TK Construction

"for all your building needs"

TK Construction - Michael Kirwan
6565 South Gippsland Highway HEDLEY VIC 3967
P: 03 5184 1223 | M: 0428 911 900
E: kirwanbuilders@gmail.com

HIA MEMBERSHIP: 813 711 | DB-U: 20399 | A.B.N: 40 896 158 242



Gatt's Tile Roof Restorations

We cater for everything roofing

- Pressure washing
- Roof painting
- Repointing tile roofs
- Install gutter guard
- Replace broken tiles
- Repair leaks

-External high pressure washing of:

- *Houses
- *Buildings
- *Driveways
- *Gutters

Port Welshpool workshop

Morwell workshop

Please phone 0434 725 536

All work is done by tradesmen

Fully insured and Worksafe approved



Carpet Bowls

Old Ferry Terminal, Port Welshpool
Come along for a fun afternoon of
Carpet Bowls

No membership
or equipment required,
everything is supplied for you.

Every Tuesday afternoon:
12.30 - 3.00pm

\$5 per session followed by tea,
coffee, biscuits and a chat.

Everyone welcome!



Foster Golf Club
7 Reserve Street
Foster Victoria
3960

19 Chantelle Peters (03)5682 2272
golfclub19@outlook.com.au

ANTHONY BRAVINGTON

Cleaning & Property Maintenance Contractor

- Commercial Cleaning, Domestic Cleaning and all types of Property Maintenance
- Accommodation Contracts
- Office Building Contracts
- Retail Shops Contracts
- School Cleaning Contracts
- Builders Cleans
- All Property Maintenance etc
- Window Cleaning
- Carpet Steam Cleaning



THURSDAYS & FRIDAYS ONLY

1 bedroom house	\$70
2 bedroom house	\$90
3 bedroom house	\$120
4 bedroom house	\$150

Call Anthony for all your cleaning needs

Mobile: 0418 146 986

Email: bravtecleaning@gmail.com

TABLE TENNIS

WELSHPOOL MEMORIAL HALL

Please join us for a friendly social hit
of table tennis

Wednesday 6.30pm-8.30pm

Gold Coin Entry

Please contact JJ on 0400 114 905 for
all enquiries

All equipment supplied
All ages, all levels welcome!





Winter Wordsearch



KNAMWONSTNXOTFE
 KOWI NTERECOCOAL
 P I C I C L E I Z R R R B K G
 CHMBWMI TTENSMWI
 HSGHWSZI WDYFEAL
 TGHQRAKENEZORFA
 OLXODSSPRUCEI SU
 BOJEVCARDI NALNA
 OVRNLEBGOTAHI OR
 GETCHI LLYGZOMWD
 GSPCDOKTZGQLKFB
 ACTSKATEXSCLDLS
 NI ZMMYWFEXDYEAH
 CWNLUTGYNSOALKB
 SDOQVLQKHWMQSEA

WINTER
 SNOWFLAKE
 SNOWMAN
 ICICLE
 SPRUCE
 HOLLY
 CARDINAL
 FROZEN
 BRRR
 CHILLY
 SLED
 GLOVES
 HAT
 SKATE
 SKI
 TOBOGGAN
 COCOA
 SHOVEL
 MITTENS

	3	4						9
9	6		2					
						6		7
			3		8	5		
	2		6		4			1
		8	5		2			
5		7						
					5		8	1
2						7	3	



Winter Sudoku

DIRECTIONS: Fill in the grid so that each column, row and box contains each of the letters in the word SNOWFLAKE.

			W		E		S	F
O	F				K			E
	N	E					A	
E			O	S				
S				E	L	K	O	N
		N					S	
N	A		E		O		K	
		K			A		L	
L	E		S			N		

April Solution

2	9	8	7	4	3	1	5	6
7	3	6	5	8	1	2	4	9
1	4	5	6	9	2	3	8	7
5	1	9	4	2	7	6	3	8
8	2	7	3	1	6	5	9	4
4	6	3	8	5	9	7	2	1
6	8	4	2	7	5	9	1	3
9	7	2	1	3	4	8	6	5
3	5	1	9	6	8	4	7	2

