



Welshpool Future Focus Group

The Welshpool Future Focus Group (WAFF Group) are pleased to report that the new Community Plan is complete and available for viewing at the Rural Transaction Centre. After consulting with members of the community, the group put all the ideas together and after viewing a number of different plan outlays, came up with the Welshpool & District Community Plan 2023.

The plan includes Our Vision, some information and statistics about the areas the plan covers, and contact details for all of the community groups within the area. The plan then goes on to include some short term, long term and high priority projects followed by a list of other projects as decided by the community members.

We have also included a list of community owned or run assets and any projects they may have on their wish list. Hopefully including them in our overall community plan may assist them with future funding for these projects.

The WAFF Group have made a start on the list and have made a number of enquiries including: Free WiFi in Welshpool

More seating along the Port Welshpool foreshore

Welcome packs for new residents

Replacing the rotunda in Welshpool

Enquiries into a bus shelter at the V/Line bus stop in Welshpool.

With thanks to the Welshpool & District Advisory Group we have also put in a grant for a Community Garden to be developed in the rear garden area of the Welshpool Op Shop. This will be a fantastic area for everyone to use and was very high on the list of items suggested by community members. Fingers crossed we have some good news for you in the near future.

If you would like to join us in helping to improve our beautiful part of South Gippsland please enquire at the Welshpool Rural Transaction Centre.

Welshpool & District Community Plan 2023

Created by the Welshpool Area Future Focus Group (WAFF Group)
in consultation with community members.

Our Vision:

To continue to share our strong sense of community and appreciate the natural beauty, safety and friendly environment our area has to offer.
Caring for our rural lifestyle whilst encouraging a sustainable future through the promotion of increased activity supporting and encouraging new businesses, industries and tourism respectful of the values of the local community members.
To improve current facilities / activities and create new ones to promote and encourage community involvement in both young and old.

Where we are:

Welshpool & District is situated in the Corner Inlet District of South Gippsland, approximately 2 hours from Melbourne, Victoria's capital. Welshpool is situated between Foster to the West and Yarram to the East. The district encompasses Welshpool, Port Welshpool, Hedley, Bingenwarri, Hazel Park, Agnes and Woorarra East. At the eastern end of the South Gippsland Shire these communities are small but have a common theme, community strength and cooperation with each other and the wider community.



Disclaimer

This newsletter is an independent self-funded publication produced by staff and volunteers of the RTC and it does not reflect the opinions of the Committee members, South Gippsland Shire, or the Department of Planning and Community Development.



TRADING HOURS
 MON - FRI
 10.00AM - 3.00PM
 PHONE 5688 1087

- WELSHPOOL COMMUNITY LIBRARY
- BENDIGO BANK AGENCY
- SERVICES AUSTRALIA AGENCY
- V/LINE TICKETING OFFICE
- ROOM HIRE AVAILABLE
- PASSPORT APPLICATIONS
- COPY & PRINT SERVICES
- BISLEY WORKWEAR

Other services by appointment only

- Gibson Accounting – 5176 2031

Agent

At a Services Australia Agent you can:

- **USE OUR COMPUTER** to access my.gov.au and other government services and information
- **USE OUR PHONE** to access the agency's self service options or to speak with us
- **ACCESS FREE WI-FI 24/7** to connect to government services – no password required
- **USE OUR EQUIPMENT** to upload, print and photocopy documents
- **GET YOUR IDENTITY DOCUMENTS CERTIFIED**

Agents can:

- help you to set up and access digital services
- help you find information online about payments and services
- arrange referrals to specialist services.

Agents can't:

- access your records
- make decisions about or change your payments or debts
- issue a Medicare card or Health Care Card
- do customer interviews
- contact the agency to get information about your payments or entitlements, without your permission.

Agents aren't Services Australia staff.

Your local Agent is:

Welshpool & District Advisory Group Inc

Address:

14 Main St, WELSHPOOL

Hours of business:

10am-3pm Monday to Friday

Self service

You can use myGov to access your Centrelink, Medicare and Child Support online accounts. Go to my.gov.au

You can also access our services through the Express Plus mobile apps. For more information go to servicesaustralia.gov.au/selfservice

Online Services Support Hotline

myGov Helpdesk 132 307 select option 1
 Centrelink Helpdesk 132 307 select option 2

Centrelink phone self service

Phone self service 136 240
 Report income and update your obligation requirements 133 276

For help in other languages

Centrelink 131 202
 Medicare and Child Support 131 450

How to contact us

ABSTUDY	Freecall™ 1800 132 317
Assistance for Isolated Children	132 318
BasicsCard balance enquiry	Freecall™ 1800 057 111
BasicsCard and Income Management	Freecall™ 1800 132 594
Centrelink debt recovery	Freecall™ 1800 076 072
Centrelink Indigenous Call Centre	Freecall™ 1800 136 380
Child Support	131 272
Complaints and feedback	Freecall™ 1800 132 468
Disability, sickness and carers	132 717
Families	136 150
Farmers and their partners	132 316
Financial Information Service	132 300
Grandparent Advisers	Freecall™ 1800 245 965
Indigenous debt recovery	Freecall™ 1800 138 193
Job seekers	132 850
Low Income Health Care Card	132 490
Medicare	132 011
Medicare Aboriginal and Torres Strait Islander Access Line	Freecall™ 1800 556 955
National Redress Scheme	Freecall™ 1800 737 377
Older Australians	132 300
Youth and students	132 490
TTY enquiries	Freecall™ 1800 810 586

TTY is only for people who are deaf or have a hearing or speech impairment. A TTY phone is required to use this service.

11/03/2021



VLINE BUS SERVICES

Purchase tickets at the Rural Transaction Centre or collect a VLINE Bus Timetable



servicesaustralia.gov.au



Gibson Accounting

Kieran Olree

PH: (03) 5176 2031

Fax: (03) 5174 6313

101 Hotham Street
 Traralgon, Vic 3844

Email: kieran@gibsonaccounting.com.au

Kieran Olree is at the RTC every Wednesday
 By appointment only - **(03) 5176 2031**
 For more information and all the latest tax updates and handy hints for tax time, please visit Gibson's website:

www.gibsonaccounting.com.au

What's on in Welshpool



Port Welshpool &
District Bowling
Club Inc.

Community Bank Toora &
Foster

Bendigo Bank

OPEN TRIPLES

Sunday 29th OCTOBER 2023

Entries close 5pm 27th October.

Commencing at 10:00am

3 games - 12 ends. Bowls Attire.

\$30 per team.

Afternoon tea provided.

RSVP: Margaret 03 5185 1226 / 0439 681 123

Errol 0417 133 271

**Welshpool & District
Horticultural Society Inc.**
63rd SPRING SHOW



Friday 3rd Nov 1:30pm - 5pm
Official Opening at 2pm

Saturday 4th Nov 10am - 4pm

Welshpool Memorial Hall, South Gippsland Hwy, Victoria
Admission \$5, Children free
Plants for sale from onsite Club Nursery

Show Secretary - Frances Grylls 0481 385 122 | Email: prueflaming@bigpond.com
Assistant Show Secretary - Prue Fleming 0418 775 717 | Entries Notified to Prue by 6pm Wednesday Nov 1st



Port Welshpool Working Group
Market

Sunday 26th November

9am – 2pm

Old Ferry Terminal
Port Welshpool

(Stall enquiries to Alma.....0427310599)

Welshpool Recreation Reserve Committee presents

**Saturday
2nd
December**

Races Start 10am

Lawn Mower Races

Arthur Sutherland Recreation Reserve
Port Welshpool Rd
Welshpool

Jumping Castle
Inflatable Slide
Chair-o-plane
Face Painting
& more

RACING

Welshpool Recreation Reserve

Entry : \$5 per person, \$15 family, \$20 competitor
All day rides pass \$10

Made with PosterMyWall.com



Super Clearance Discounted Line

Hi Vis Taped Polo - \$25 each

Only 4 available – XL, 3XL, 4XL

14 Main Street Welshpool



The Welshpool Agency hours remain as

Monday to Friday 10am to 3pm

Please note our new phone number

5688 1087

Welshpool & District Advisory Group

AGM

Tuesday 14th November

5.30pm

Welshpool Hotel



RTC Room for Hire

Office Hire: \$11 per hour

\$33 per day

Time for a home loan health check!

With the current cost of living, there's never been a better time to review your home loan.

Enquire online at [bendigobank.com.au/healthcheck](https://www.bendigobank.com.au/healthcheck) or call your nearest branch on 5688 1087.

 Community Bank · Toora and Welshpool Agency



*Source: Roy Morgan Single Source Australia, May 2023. All loans are subject to the bank's normal lending criteria. Fees, charges, terms and conditions apply. Please consider your situation and read the Terms and Conditions, available online at www.bendigobank.com.au or upon request from any Bendigo Bank branch, before making a decision. Bendigo and Adelaide Bank Limited ABN 11 068 049 178 AFSL 237879 (1676698-1734981) (05/22) OUT_31609168, 12/09/2023

Welshpool Op Shop & Nursery

Monday to Friday

Ph: 0417 367 629

10am – 4pm

Saturday 10am – 2pm



EFTPOS now available



WELSHPOOL OP SHOP

SPRING CLOTHING NOW ON DISPLAY

Fill a basket for \$5
All ladies, men's and
children's clothes.



The cobwebs in my
house just
became
decorations.

Thanks,
Halloween!



APPLY
NOW

Community Bank · Toora & Foster

Need help with the costs of study?

Applications are invited from eligible students who require assistance with educational costs in 2024.

Open Monday 4 September 2023
Close Friday 26 January 2024

bendigobank.com.au/scholarships



Community Enterprise Foundation™

Community Bank Scholarships will be funded from management accounts of the Community Enterprise Charitable Fund ABN 12 102 648 958 (the Fund), The Bendigo Centre, Bendigo VIC 3550. Sandhurst Trustees Limited ABN 16 004 030 737 AFSL 237906, a subsidiary of Bendigo and Adelaide Bank Limited ABN 11 068 049 176 AFSL 237879, is the Trustee of the Fund. 1400006-1400008 OUT_30779336

Christmas Gift Drive

Toora & Foster Community Bank Branches are partnering with Manna Gum Community House, Paragreen Real Estate, Foster Primary School and St Vincent de Paul this Christmas to provide a brighter Christmas for those in need.

Simply drop off donations at any of the locations listed below
Before 6th December 2023.
Volunteers from Vinnies and Manna Gum will collect the donations and distribute accordingly around our local Gippsland area.

- Bendigo Bank Toora Branch - Mon-Fri 10am-3pm
- Bendigo Bank Foster Branch - Mon-Fri 9:30am-4pm
- Rural Transaction Centre Welshpool - Mon-Fri 10am-3pm
- Manna Gum Community House - Mon-Thurs 10am-3pm
- Paragreen Real Estate Foster - Mon-Fri 9am-5pm Sat 9am-12pm
- Foster Primary School - Mon-Fri 8.30am-3.30pm

Please remember that Christmas is for everybody, gifts gladly accepted for all age groups.
Vouchers enable the recipient to purchase something they need, or even a gift for a loved one they couldn't otherwise purchase.

~Local Businesses Preferred~
~Please Do Not Wrap Gifts~

Online donations through Give Now, see our Facebook page for the link
Cash Donations accepted at our Manna Gum Office or at our local Bendigo Bank Branches

Please join us for an information session:

10am—12pm

Thursday 9th November

South Gippsland Hospital Fleming Room
Morning Tea Provided

An opportunity to learn about:

Positive Ageing Service
Home Care Packages
My Aged Care

Patient transport and other local services to support independent living, active and positive lifestyles, and health and wellbeing over 65 years.

RSVP: 5683 9777 or Reception@sghs.com.au



**South
Gippsland
Hospital**

Adaptability
Trust
Excellence
Accountability
Mutual respect



VICTORIAN VIRTUAL
EMERGENCY DEPARTMENT
Northern Health

**WE ARE HERE
FOR YOU 24/7**

Victorian Virtual Emergency Department

OPEN 24/7



Scan the QR
code or visit
vved.org.au



VICTORIAN VIRTUAL
EMERGENCY DEPARTMENT
Northern Health

The Victorian Virtual Emergency Department allows you to access care for non-life-threatening emergencies, 24 hours a day, seven days a week.

You will be connected to our doctors and nurses via a video call and receive medical advice from the comfort of your home.

Interpreter services are available.

If your emergency is life-threatening, call Triple Zero (000).



visit vved.org.au

Northern Health



Port Welshpool and District Bowling Club

Contact Angela Tisler 0448440153
portwelshpoolbc@gmail.com

22 Bowling Club Rd
(Left of the Long Jetty along the foreshore)

Social and Barefoot Bowls
Fridays during the bowls
season (Oct - end of April)
from 4:30pm.
Bowls provided.

Bar service available. BBQ & Salad dinners
available most weeks at 6:30pm

**NEW MEMBERS AND BOWLERS
MOST WELCOME**



Corner Inlet Swimming Club Dolphins

The Corner Inlet Swimming Club (CISC) welcomes existing and new families to start of our 2023/24 training season commencing Term 4, Monday 2nd October

When: Mondays Junior Squad 5.30pm – 6.30pm
Senior Squad 5.30pm – 7pm
Fridays Junior Squad 4pm – 5pm
Senior Squad 4pm – 5.30pm

Where: Toora Swimming Pool

Why: Fun, Fitness, Technique, Endurance, Competition

Who: 7yo to 100+yo who can competently swim 2 laps of the pool in 3 strokes

What to Bring: Goggles, Flippers, Water Bottle, Towel

Contacts: Bree 0407 354 618 or Jess 0413 954 333
dolphiniscisc@gmail.com
Facebook: Dolphins – Corner Inlet Swimming Club

**Come and try
First session FREE**

(Pool entry fees still apply)

CISC is a family friendly swimming club offering accessible training where members can improve swimming fitness, technique and challenge themselves to achieve personal best times.

"Ribbons are a bonus, not a focus!"



Over \$2000 worth of prizes to be won!

Welshpool Kindergarten Annual

Raffle Fundraiser

Major Prizes

2023

**\$2 per
ticket**

1st 2x Tickets - Wilson's Promontory Cruises by Pennicott Wilderness Journeys & a 6 piece Berry's Creek Gourmet Cheese Platter – total value \$350

7th \$100 Rebecca Farley Photography Voucher & \$25 Yarram Plaza Hot Bread voucher

2nd \$200 Toora Foodworks voucher & \$50 South Gippsland Tank Adventures voucher

8th \$100 Rebecca Farley Photography Voucher & \$25 Toora Woodfire Pizza voucher

3rd Load of Firewood (donated by Charles Ward) & \$25 Yarram Plaza Hot Bread voucher

9th \$100 Rebecca Farley Photography Voucher & \$25 Moore's Butcher Voucher

4th Minnow to Marlin 4 Swimming Lessons & Toy Hamper – total value \$150

Additional Prizes

\$50 Trulli Voucher
2x Stadium 4 Cinema Tickets
\$50 Woolworths Yarram Voucher
\$50 Port Albert Fish and Chip Co Voucher
\$50 Foster Seafoods Voucher
\$50 Victoria Hotel Alberton Voucher
Port Welshpool Store Seafood Platter
\$30 Prom Meats Voucher
Port Welshpool Store 2x Big Bird Burgers
\$25 The Beautie Room Voucher
\$25 Welshpool Supermarket Voucher
\$20 Windmill Café Voucher

5th Toy Hamper & Children's Waterproof Overalls from Inside Out Clothing – total value \$150

6th 4x tickets to AFL – donated by TheirCare & \$25 Toora Woodfire Pizza voucher

All tickets returned by 22nd November
Raffle drawn 24th November
Thank you to our supporters and generous prize donors. The funds raised will go towards updating our indoor furniture.

FRIENDS OF WELSHPOOL BIKE RIDING GROUP



Wednesdays meet up at the Welshpool Train Platform

@ 8.30am and enjoy a Ride to Toora

We will stop and enjoy a Cuppa @ the Windmill Café before riding back to Welshpool.

Come along and join in the Fun and meet new people.

Welshpool & District Primary School

Congratulations to all the students who have earned reading awards.



THANK YOU



We would like to say a big thank you to the Toora Lions Club for their very generous donation towards the redevelopment of the basketball court



Toora Lions



Children's Week



Saturday 21 to Sunday 29 October is national Children's Week! The upcoming week celebrates the talents, skills, achievements, and most importantly, the rights of our youngest residents. The theme for Children's Week 2023 is "Children have the right to relax, play and take part in activities they enjoy".

This year, South Gippsland Shire Council in partnership with Myli – My Community Library, will be hosting a Children's Week event. It will be a celebration of childhood and aims to showcase the greatness of our littlest locals.

The free event will take place Thursday 26 October from 10.00am to 1.00pm at Coal Creek Community Park and Museum (at the Pig and Whistle Café). The event is open to all families and children (0 to 6 years old), and will include activities such as face painting, a petting zoo, sausage sizzle, and story time with Myli – My Community Library as well as arts and crafts.

For further information, please visit: www.southgippsland.vic.gov.au/childrens-week

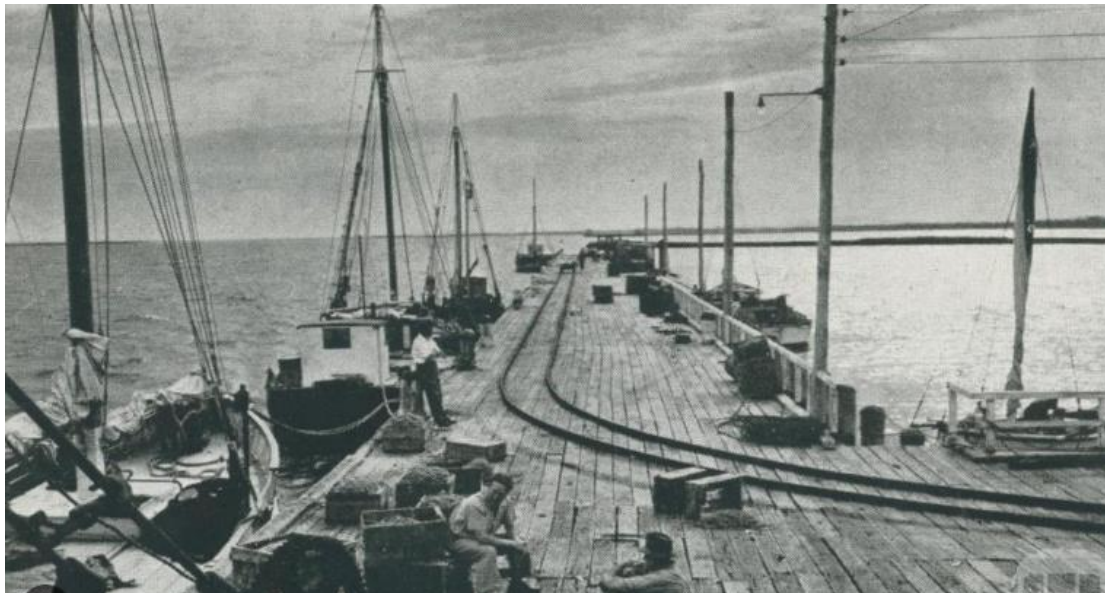
Port Welshpool & District Maritime Museum

The Ship to Shore Radio..... VH3AP...11am and 5.18pm daily

A very important part of Port Welshpool's Maritime history:

When Cray and Shark boats headed out to sea for as many weeks as it was necessary to catch a load of fish to make a living, the communication between "ship to shore" radio was very important. In the season when the weather was good and fish prices excellent, Tasmania was the Port of call but all concerned at Port Welshpool needed to know. Today the contact is always there with the invention of mobile phones: there is always someone just a press of a button away. But back in the day you relied on the "ship to shore" radio in the event of a disaster or where a crew member became ill or the boat needed mechanical assistance, and even then time or the weather could be against you. Usually there was always someone at hand listening as a call was put out for help; to have an ambulance to be on hand or whatever services was in need when the boat returned to shore. On the other side of the coin wives and girlfriends could keep in touch knowing their men were safe and were having a successful trip, and when they planned to return to port. On shore at Port, the radio was kept in the net shed at the end of the fishermen's jetty and was operated by wives and girlfriends. For many years Heather Norling shared in this important service with Wendy Norling, June Busk and Coral Stephens. Heather remembers they also gave a report on the current weather for Bass Strait. After the shed burnt down, the daily report by these dedicated radio operators was from a garage at Midge and Jack Gardeners home next to the now Museum in Turnbull Street. Daral Corbett remembers in the 70's while fishing with Snow Busk and Ian Woods on the "Able", the importance of these women keeping them in touch with the home.

Ryan's Transport of Leongatha is another important part of the ports history as loads of fish were transported by them to Melbourne. Dennis Ryan's memory cast back, when living at the Port in the 60's, he and Jim Stephens operated the radio daily. Dennis noted that the radio was a very important link between the fishing boats and the families of the port and also other vessels in the area to gain local information such as their catches and importantly the weather. Imagine.....As you read this recollection of a Port that was, from just a few that played a very important part in its being, imagine with boats in and out, fish carted to Melbourne, all in the anticipation for a good price, for their hard work. But for the net fishermen returning with their catch, after their fish were boxed, iced and loaded for Melbourne fish market, the nets were then seen draped over the railing of the jetty blowing in the wind drying and inspections made if any holes were visible. Noting these nets of the time were made of dyed cotton. The net shed mentioned was also a community hub for many men of the Port, with sea water in their veins, always interested to know where the fish were biting or just to share their knowledge on the weather and when to go out. When after collecting the daily paper across the road at the Post Office, these old timers relaxed and read the goings on of the world waited till 11 am when they were able to hear what the "ship to shore" radio told them of what was being caught and where and who was expected in.



Welshpool Golf Club

Fri 13th Oct, Chook Run cancelled due to weather.

Sat 14th Oct, Men's Singles Championship. Played under wet, windy & cold conditions.

A Grade Scratch Winner: A. Ditta 90 c/b
R/U: Delaney also 90.

A Grade Handicap Winner: B Mitchell nett 76.
B Grade Handicap Winner: G. Stephenson nett 76.

R/U: B. Macpherson nett 77 & A. Holland nett 82.

NTP: 6th & 8th B. Mitchell.

Sun 15th Oct, 18hole Ambrose Medley. Total contrast to Sat, no rain just a bit windy.

Winners: A. Duncan, D. Lucas & K. Kesper 55 1/2
R/U: A. Ditta & B. Mitchell 64 1/2, A. Holland & L. David 70 1/2,
NTP: 8th B. Vannas, 15th A. Ditta.

FRIDAY NIGHT DRINKS

Join us every Friday night (Until the pub re-opens)
 for drinks and a chat. Free bar snacks available!
 Open from 4pm onwards

Promontory Produce & Craft Market Inc.

MARKET BOOKINGS TO
 P.O. BOX 180, FOSTER, 3960

MARKET ENQUIRIES 0439 033 960

The Biggest and Best Craft Markets in Gippsland
 200 Stalls around the oval at
FOSTER SHOWGROUNDS

2023-2024

SUNDAY, NOVEMBER 5th
 SUNDAY, DECEMBER 10th
 SUNDAY, DECEMBER 31st
 (New Year's Weekend)
 SUNDAY, JANUARY 28th
 (Australia Day weekend)
 SUNDAY, MARCH 10th
 (Labour Day weekend)
 SUNDAY, MARCH 31st
 (Easter Sunday)



No dogs allowed

E.W. & H.P. FOWLER

WELSHPOOL OUTDOORS & ORIGIN GAS SUPPLIES

~~\$3,490~~
NOW \$2,990
RIDE AWAY
SAVE \$500

GEORGE 110

- 110cc, EFI engine ● Electric start
- 6.4-litre ● 2WD
- Hydraulic disc brakes
- Magnetic tether
- Adjustable speed limiter
- Optional smartphone connectivity
- Available in Baja Blue or Rocket Red

~~\$5,290~~
NOW \$4,490
RIDE AWAY
SAVE \$800

GEORGE 110 BY CFMOTO

FREE STARTER PACK WORTH \$250

- Electric - whisper quiet - Youth ATV
- 4.5kW Max power
- 40Nm Max torque
- 3hr+ run time ● 5-inch LCD display
- Optional smartphone connectivity
- White/Lemon Green or White/Lava Orange

19 MAIN STREET
 WELSHPOOL VIC 3966
 PH: 0356881304

EMAIL: welshpooloutdoors@bigpond.com

~~\$8,790~~
NOW \$8,790
RIDE AWAY

GEORGE 400

FREE FRONT BAR & SEAT COVER WORTH \$350

- 400cc engine, 30hp
- Selectable 4WD ● Steel wheels
- Steel carrier racks
- 612kg tow capacity
- Available in Sky Blue

~~\$9,590~~
NOW \$9,590
RIDE AWAY

GEORGE 400

FREE FRONT BAR & SEAT COVER WORTH \$350

- 400cc engine, 30hp ● Power steer
- Selectable 4WD ● Alloy wheels
- 2500lb winch
- Available in Lava Orange

~~\$10,290~~
NOW \$10,290
RIDE AWAY

GEORGE 520

FREE FRONT BAR & SEAT COVER WORTH \$350

- 495cc engine, 34hp ● Power steer
- LED headlights ● Alloy wheels
- 2500lb winch ● 5-inch display
- Handguards ● 612kg tow capacity
- Available in Force Red

~~\$11,990~~
NOW \$11,490
RIDE AWAY
SAVE \$500

GEORGE 625

- 580cc engine, 45hp ● Two drive modes
- Power steer ● Front and rear diff lock
- All 4 wheel disc brakes ● 3000lb winch
- 500kg tow capacity
- Available in Camo or Velocity Grey



In the know

WANT TO STAY IN THE KNOW?
 In The Know is your fortnightly reminder of what Council is up to at the moment.
 Have a look at what is going on and how you can get involved!

Do you know someone who might want more information on what Council is up to?
 Be sure to send this message on and have them [register](#) for a copy or share it on your socials!

[f](#) [t](#) [in](#)

Welshpool Supermarket & Café

Pies, pasties, sandwiches & salads
 home-made slices & muffins.
 Hot & cold drinks & more



WINTER TRADING HOURS

Monday – Friday 7am to 4pm
 Saturday 9am to 2pm
CLOSED SUNDAY



Alice Filon
 Independent Franchise Owner
 Gippsland

Driving Miss Daisy®
 We're There For You

For Enquiries & Bookings
 Call: 0492 122 024

E: gippsland@drivingmissdaisy.com.au

WELSHPOOL CEMETERY TRUST

CHAIRPERSON

DAVID GRILLS **0428 858 961**

www.drivingmissdaisy.com.au

Companion driving for: Medical appointments,
 Hairdresser, Shopping, Scenic drives, Airport/rail/bus
 transfer, Pets to vet, School & children's activities

FOSTER SEAFOODS



35 Main Street, Foster
 Ph: (03) 5682 2815

With catches of Inlet fish arriving within the shop on a daily basis and our vessels returning from extended trips into Bass Strait, you can be assured that the quality is second to none.

We also have an extensive list of products with very competitive prices.

Danny O'BRIEN MP
 Member for Gippsland South

54B Cunninghame St, Sale VIC 3853
 03 5144 1987
danny.obrien@parliament.vic.gov.au
www.dannyobrienmp.com.au

Working for Gippsland South

[f](#) [t](#) [ig](#) /dannyobrienmp

THE NATIONALS for Regional Victoria



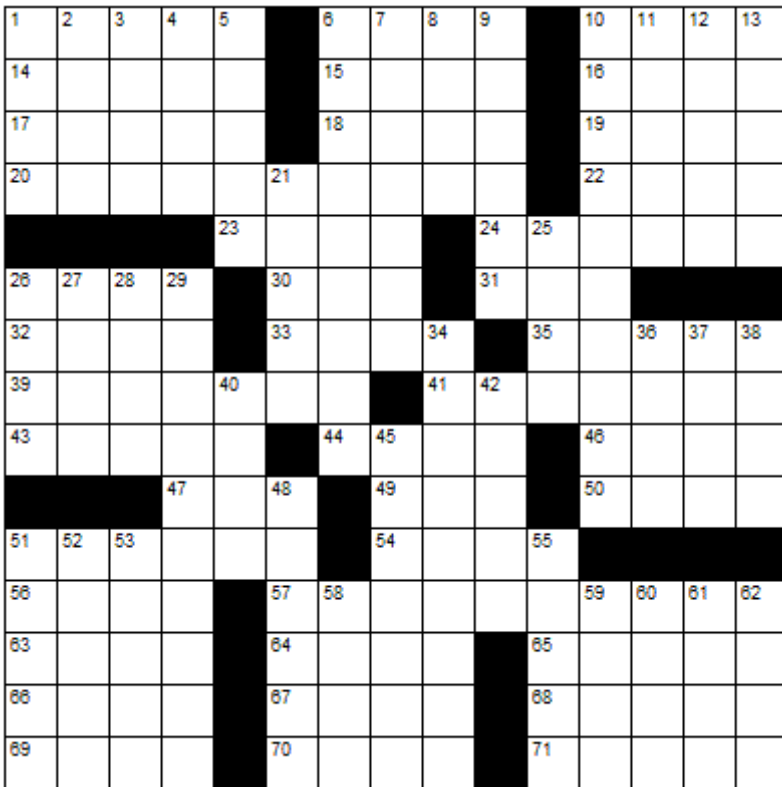

Planning a burn off?

Check. Apply. Notify.
 Go to firepermits.vic.gov.au
 or call 1800 668 511

"Happy people plan actions, they don't plan results."

– Dennis Waitley

CROSSWORD



Down

1. Cicatrix
2. Nil
3. Ancient
4. Visored cap
5. Medieval sword
6. Betrothals
7. Modifications
8. Peel
9. Oust
10. Sexy photographs, informally
11. Immense
12. Labor organization
13. Cast out
21. Beach souvenir
25. Pear type
26. Dogfish
27. Containers
28. Repose
29. Showing curiosity
34. Female heirs
36. Mimicked
37. Marsh plant
38. Glimpse
40. Diva's solo
42. Slumber
45. Auto safety devices
48. Bivalve mollusk
51. Swindles
52. Pee
53. Above the horizon
55. Meat on a stick
58. Style of hairdo
59. Remedy
60. Angers
61. Slave
62. Immediately

Across

1. Serpent
6. Beige
10. Hint
14. Pens
15. Tibia
16. Be suspended from above
17. Highly skilled
18. Shallow containers
19. A Great Lake
20. Weather instruments carried aloft
22. Freudian topics
23. Drink quickly
24. Missing
26. Dugout shelter
30. East southeast
31. Foot digit
32. Comportment
33. Whip
35. Frighten
39. Set up
41. Eludes
43. Daisylike bloom
44. Travel on water by wind
46. Hoard
47. Lip
49. Anger
50. Countercurrent
51. Office
54. Raise a stink
56. Colored part of the eye
57. A division of a species
63. Itemize
64. Resorts
65. Explode
66. Leg joint
67. Border
68. Sporting venue
69. Dispatch
70. Euphemism for death
71. Assail



Winning entry will receive a free coffee and cake from the Welshpool Café & Supermarket



LAST MONTHS CROSSWORD RESULT

Y	A	W	P		A	S	P	S		S	A	P	O
A	G	A	R		P	L	A	T	E		A	N	O
M	U	T	E		T	O	T	A	L		M	A	L
S	E	E	D	S		P	I	T	I	F	U	L	L
					R	A	P	S		O	U	T	E
D	E	S	T	I	N	E		S	E	S	A	M	E
I	M	P	E	T	I	G	O			T	I	A	R
G	O	O			T	O	U	C	H			N	O
S	T	U	C	K		R	O	A	D	S	I	D	E
					E	T	H	I	C	S		D	R
					I	D	O	L	S		E	C	R
T	R	A	N	S	L	A	T	E		S	A	L	E
H	A	L	O		I	V	O	R	Y		Y	A	R
O	L	E	O		C	E	A	S	E		E	T	N
R	E	E	K		S	T	E	W		D	E	E	P

Sponsored by: **Welshpool Supermarket**

Entries must be received before
15th November, 2023

All correct entries will be put into a hat and the winner will be drawn by Supermarket staff. No correspondence will be entered into etc.

Please remember to double-check your spelling.

Remember to include your name, contact number and date on your returned entry, Thank you.

Winner of the September Crossword:

Arie Bos



TABLE TENNIS

WELSHPOOL MEMORIAL HALL

Please join us for a friendly social hit of table tennis

Wednesday 6.30pm-8.30pm

Entry is only \$2 a week

Please contact JJ on 0400 114 905

for all enquiries

All equipment supplied

All ages, all levels welcome!



Carpet Bowls

Old Ferry Terminal, Port Welshpool

Come along for a fun afternoon of

Carpet Bowls

No membership

or equipment required,

everything is supplied for you.

Every Tuesday afternoon:

12.30 - 3.00pm

\$5 per session followed by tea,

coffee, biscuits and a chat.

Everyone welcome!



Community Group Listing

***Welshpool & District Advisory Group (WDAG)** – Contact: Linda Razinger 03 5688 1087

***Welshpool Area Future Focus Group (WAFF Group)** – contact via the Welshpool Rural Transaction Centre

***Welshpool Fire Brigade** – training every Thursday night 7.30pm

***Welshpool Recreation Reserve** – Contact: Madelaine Mason 0409 976 211

***Welshpool Basketball Association** – Contact: Madelaine Mason 0409 976 211

***Prom Coast Soccer Club** – <http://www.promcoastsoccerclub.com.au/>

Contact: Shellie Cashmore 0419 322 384

***Welshpool Memorial Hall** – Contact: Diane Bradford 0491 155 029

***Friends of Agnes Falls** – <https://www.facebook.com/FriendsOfAgnesFalls/>

***Port Welshpool Fishing Club** – Contact: Jenny Horner 0428 862 028

***Port Welshpool Working Group** – Contact: Alma Mattingley 0427 310 599

***Port Welshpool & District Bowling Club** – Contact: Angela Tisler 0448440153

***Welshpool & District Horticultural Society** – meeting every 2nd Wednesday of the month.

Contact: Tom Reakes Ph. 0429966002

***Port Welshpool & District Maritime Museum** – Email: pwmuseum@gmail.com

***Port Welshpool Coast Guard** – Contact: Robin Street 0401 142 470

***Welshpool Golf Club**–Contact: President Paul Delaney 0459965129 /Captain Russell Barwick 0427849846

***Welshpool Table Tennis**-Contact: JJ on 0400 114 905

LOCAL SERVICES.....

DRIFTERS GROOMING



0490 400 808
CHRIS



AAC MOBILE
AUTO AIR
CONDITIONING

Maintenance & Repairs to...

TRUCKS * TRACTORS * MACHINERY * PASSENGER & FOOD TRANSPORT VEHICLES

Ian Dubignon **M. 0448 761 642**
aacautoair.com.au

WELSHPOOL CRANES

0428 171 666

Mobile Crane
Dogmen
Riggers

Gary Mason
info@gmmason.com.au

How can we help?

For information and assistance:

- 9 Smith Street, Leongatha VIC 3953
- 5662 9200
- council@southgippsland.vic.gov.au
- www.southgippsland.vic.gov.au
- Facebook: southgippslandshirecouncil




Snap Send Solve

Did you know that you can report something that needs fixing via Snap, Send, Solve?

Simply download the app from the App Store or Google Play and start reporting



John Hoy
Trade qualified Farrier
(25 years experience)

0447 229 390

ALBERTON TIMBER
& TREATMENT PLANT P/L

FOR ALL YOUR TREATED PINE NEEDS

POSTS SAWN TIMBER DECKING CUSTOM TREATING

SLEEPERS NUTS AND BOLTS PALINGS AND MORE

SOUTH GIPPSLAND HIGHWAY, ALBERTON, VIC, 3971
Ph (03) 5183 2437 Fax (03) 5183 2659 Email sales@albertontimber.com.au



CONCRETER

Delivering Quality Concrete Services for Residential, Commercial & Farm Upgrades.

CALL KANE TODAY FOR A FREE ON-SITE CONSULTATION

5613 2013 | 0400 840 729
E: admin@sgconcrete.com.au
W: www.sgconcrete.com.au

SOUTH GIPPSLAND
SEPTIC TANK CLEANING

Also Portable Toilets Hire

Call Chris Whittle
(03) 5688 1572



TV & DATA SYSTEMS

Digital Antennas, TV wall mounts, Data & Computer outlets, Home Theatre, Hidden Wiring, Networks, Offices, CCTV, Repairs, Equipment Installations

Licensed Cable Installer
Domestic, Commercial & Industrial

Steve Mooney 0427 257 222

Kirwan Builders

TK Construction

"for all your building needs"

TK Construction - Michael Kirwan
6565 South Gippsland Highway HEDLEY VIC 3967
P: 03 5184 1223 | M: 0428 911 900
E: kirwanbuilders@gmail.com

HIA MEMBERSHIP: 813 711 | DB-U: 20399 | A.B.N.: 40 896 158 242



Gatt's Tile Roof Restorations

We cater for everything roofing

- Pressure washing
- Roof painting
- Repointing tile roofs
- Install gutter guard
- Replace broken tiles
- Repair leaks

-External high pressure washing of:

- *Houses
- *Buildings
- *Driveways
- *Gutters



Port Welshpool workshop

Morwell workshop

Please phone 0434 725 536

All work is done by tradesmen

Fully insured and Worksafe approved



Foster Golf Club
7 Reserve Street
Foster Victoria
3960

19 Chantelle Peters (03)5682 2272
golfclub19@outlook.com.au

ANTHONY BRAVINGTON

Cleaning & Property Maintenance Contractor

- Commercial Cleaning, Domestic Cleaning and all types of Property Maintenance
- Accommodation Contracts
- Office Building Contracts
- Retail Shops Contracts
- School Cleaning Contracts
- Builders Cleans
- All Property Maintenance etc
- Window Cleaning
- Carpet Steam Cleaning



THURSDAYS & FRIDAYS ONLY

1 bedroom house	\$70
2 bedroom house	\$90
3 bedroom house	\$120
4 bedroom house	\$150

Call Anthony for all your cleaning needs

Mobile: 0418 146 986

Email: bravtecleaning@gmail.com

HAPPY OCTOBER!



Port Welshpool & District Museum

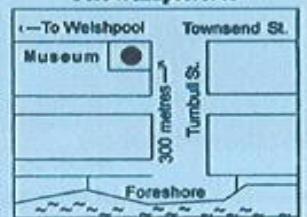


The building that houses the collection was designed and built by John Avery in 1881 for W.B.M. Smith. Being the first large home in the village, it became the unofficial community centre, conducting dances, weddings, church services and even a wine salon.

ADMISSION CHARGES

Adults	\$5
Pensioner	\$4
Student	\$2
Family	\$10

Car. Townsend & Turnbull Streets
Port Welshpool 3965



Opening Hours 12.30pm - 3.30pm
Sat, Sun, Public Holidays
and by Appointment.

or call the Museum Secretary
Janet Taylor 0413 199 776

Website - ptwelshpoolmuseum.wixsite.com/pw-museum

Group visits are welcomed.

RON LEACH

CALF BUYING

Mondays & Thursdays

Top Prices

Also buying friesland heifers
& other small beef stock

Call 0429 881 464

SPOOKY HALLOWEEN WORD SEARCH

K U Q O Z J M Y A P U M P K I N A E
 R T U Q O Y B B K R H L J F U S F I
 L E A F S C R D T O W A I B S O A E
 N C B E G Z A E E N O Y F J R A V G
 R R O Z R Y T N B G R P G S K A X I
 E Q R Q I T I V D O D D S G M I Q J
 T C F N J C R K J Y T S U P Y M C S
 N F Y E F S N O F E A C I N M S W J
 A Y F E A L N O K P J R O O Z W I T
 L R G W B Q B I M C E P J K O Y E S
 O W H O Y H G H L S I Z C B E T M O
 K D B L B U X A P B D R L A M K U H
 C U U L K D X U H K O K T H R G T G
 A C I A K E W N F D T G S T A B S O
 J J D H V S V T C W I T C H E S O D
 R T V Y P D C E B T N S V W C K C N
 A S D H D X L D F M L R T P D Q M F
 X S H A M A G I C B H X H O R W E S



- bats
- candy
- ghost
- magic
- spooky
- costume
- goblins
- haunted
- October
- pumpkin
- witches
- vampires
- halloween
- jackolantern
- trickortreat



	2		8		6	3	4
5			9				
	1						
		6	2			8	1
					7		
	4	2	7				
	8		4		9		6
		4				2	3
1							9

Crossword

1 [] [] [] [] []
 2 [] [] [] [] []
 3 [] [] [] [] []
 4 [] [] [] [] []
 5 [] [] [] [] []
 6 [] [] [] [] []
 7 [] [] [] [] []

September solution

9	5	3	2	4	8	1	7	6
1	7	2	5	9	6	8	4	3
8	4	6	7	1	3	9	5	2
5	3	7	8	6	9	2	1	4
2	9	1	4	5	7	3	6	8
4	6	8	1	3	2	7	9	5
3	8	9	6	7	5	4	2	1
6	2	4	9	8	1	5	3	7
7	1	5	3	2	4	6	8	9

