



HALLOWEEN 2024



This year the Welshpool and District Advisory Group have organised a Halloween treat for everyone. The event will begin at the Welshpool Park where we will have a free BBQ. Come along dressed in your scariest costume to be in the running for Best Costume. Families will then be given a map of Welshpool for trick or treat.

We will then head to the Welshpool Hotel for a spooky disco. Thank you to Skye for coming onboard to host the disco with more treats and spooky fun for everyone.

If you would like your home to be part of the trick or treat street walk, please see the girls at the RTC to give your details.



Disclaimer

This newsletter is an independent self-funded publication produced by staff and volunteers of the RTC and it does not reflect the opinions of the Committee members, South Gippsland Shire, or the Department of Planning and Community Development.



TRADING HOURS
MON, WED, THU, & FRI
10.00AM - 3.00PM
PHONE 5688 1087

- WELSHPOOL COMMUNITY LIBRARY
- BENDIGO BANK AGENCY
- SERVICES AUSTRALIA AGENCY
- V/LINE TICKETING OFFICE
- ROOM HIRE AVAILABLE
- PASSPORT APPLICATIONS
- COPY & PRINT SERVICES
- BISLEY WORKWEAR

Other services by appointment only

- Gibson Accounting – 5176 2031



**VLINE
BUS
SERVICES**

**Purchase tickets at the
Rural Transaction Centre or
collect a VLINE Bus Timetable**

Agent

At a Services Australia Agent you can:

- **USE OUR COMPUTER** to access my.gov.au and other government services and information
- **USE OUR PHONE** to access the agency's self service options or to speak with us
- **ACCESS FREE WI-FI 24/7** to connect to government services – no password required
- **USE OUR EQUIPMENT** to upload, print and photocopy documents
- **GET YOUR IDENTITY DOCUMENTS CERTIFIED**

Agents can:

- help you to set up and access digital services
- help you find information online about payments and services
- arrange referrals to specialist services.

Agents can't:

- access your records
- make decisions about or change your payments or debts
- issue a Medicare card or Health Care Card
- do customer interviews
- contact the agency to get information about your payments or entitlements, without your permission.

Agents aren't Services Australia staff.

Your local Agent is:

Welshpool & District Advisory Group Inc

Address:
14 Main St, WELSHPOOL

10am-3pm Monday,
Wednesday, Thursday &
Friday's

Self service

You can use myGov to access your Centrelink, Medicare and Child Support online accounts. Go to my.gov.au

You can also access our services through the Express Plus mobile apps. For more information go to servicesaustralia.gov.au/selfservice

Online Services Support Hotline

myGov Helpdesk 132 307 select option 1
Centrelink Helpdesk 132 307 select option 2

Centrelink phone self service

Phone self service 136 240
Report income and update your obligation requirements 133 276

For help in other languages

Centrelink 131 202
Medicare and Child Support 131 450

How to contact us

ABSTUDY	Freecall™ 1800 132 317
Assistance for Isolated Children	132 318
BasicsCard balance enquiry	Freecall™ 1800 057 111
BasicsCard and	
Income Management	Freecall™ 1800 132 594
Centrelink debt recovery	Freecall™ 1800 076 072
Centrelink Indigenous	
Call Centre	Freecall™ 1800 136 380
Child Support	131 272
Complaints and feedback	Freecall™ 1800 132 468
Disability, sickness and carers	132 717
Families	136 150
Farmers and their partners	132 316
Financial Information Service	132 300
Grandparent Advisers	Freecall™ 1800 245 965
Indigenous debt recovery	Freecall™ 1800 138 193
Job seekers	132 850
Low Income Health Care Card	132 490
Medicare	132 011
Medicare Aboriginal and Torres Strait Islander	
Access Line	Freecall™ 1800 556 955
National Redress Scheme	Freecall™ 1800 737 377
Older Australians	132 300
Youth and students	132 490
TTY enquiries	Freecall™ 1800 810 586

TTY is only for people who are deaf or have a hearing or speech impairment. A TTY phone is required to use this service.



Services
Australia

servicesaustralia.gov.au

**Working from home and need a change
of scenery? Office Space available to rent
at Welshpool Rural Transaction Centre.**

Mondays, Thursdays, and Fridays.

Contact us on **5688 1087** for more
information.



Gibson Accounting

PH: (03) 5176 2031

Fax: (03) 5174 6313

101 Hotham Street
Traralgon, Vic 3844

Email: kieran@gibsonaccounting.com.au

Kieran Olree

Kieran Olree is at the RTC every Wednesday

By appointment only - **(03) 5176 2031**

For more information and all the latest tax
updates and handy hints for tax time,
please visit Gibson's website:

www.gibsonaccounting.com.au

Welshpool Basketball Association



We are now halfway through our season, and it has been so much fun!

All teams have shown incredible improvements in their skills and team efforts and are playing very well leaving close scores on the board every week.

We would like to thank all the amazing volunteers that have put their hands up this year and filled in our rosters, in both the kitchen and on the scoring bench. Without the help of volunteers, we wouldn't have the great club that we have today that all our kids love so much!



Welshpool & District Primary School



Term 4 continues with our cooking & life skills program for students. Everyone enjoys the classes especially at the end when they get to eat their wares. Learning to use utensils, knife, spatula, etc and sensibly work around heating appliances is amongst some of the tasks learnt. Crushed garlic just like our nan used to use, no herb from a jar, well done kids, great effort.

Classed conducted by our visiting teacher Rob Cannon.





A variety of Bisley wear available to purchase. Orders can be placed if we don't have your size.

Call in to view our range
14 Main Street Welshpool

We have changed the way we bring you the community newsletter. Our monthly newsletters will be available in print at the Rural Transaction Centre and other shops within Welshpool.

Coloured copies will also be available to view on Facebook at **Welshpool RTC** or you can request a copy direct to your email.

To sign up to our mailing list, contact us on rtcwelshpool@bigpond.com, call us on 5688 1087 or call in to the RTC

Welshpool & District Advisory Group

Annual General Meeting

Thursday 28th November

5pm at the RTC

New Members Welcome

Community Bank
Toora, Foster and
Welshpool

Bendigo Bank

Welshpool Agency

14 Main Street Welshpool

Monday, Wednesday, Thursday & Friday

10am to 3pm

PH: 5688 1087



IMPORTANT INFORMATION

Please be advised that until further notice, the Welshpool Rural Transaction Centre will be closed on Tuesdays. We apologise for the inconvenience this may cause and we thank you for your patience and understanding.

Your closest Bendigo Bank Branch is Toora operating from 10am-3pm.

Myli – My Community Library

Join today at the Rural Transaction Centre and have access to a variety of books, audio books, DVD's and more. If it's not on the shelf it can be ordered in. Open Monday, Wednesday, Thursday and Friday 10am to 3pm. A Librarian also attends every Wednesday 12noon to 2pm for any assistance required.



Welshpool Op Shop & Nursery

Monday to Friday

Ph: 0417 367 629

10am – 4pm

Saturday 10am – 2pm



Call in and find yourself a bargain.

Plenty of clothes available.

Men's, ladies and children's clothes
of all sizes. Fill a shopping bag for
just \$7!!



Our deepest Sympathy on the loss of Joy Palmer.
Joy volunteered in the Welshpool Op Shop for
many years and was a very special lady.
Our thoughts are with the David, Robert and
family.



The Norris's saved \$5,772 last year on their home loan!*

All over Australia, homeowners are saving money with a free home loan health check.

How much could you save?

📍 Welshpool Agency 5688 1087



*Amount saved was annual payments reduction on an owner-occupier home loan when repayments dropped by \$481 a month from lower interest rate and loan restructure. Actual savings will depend on individual circumstances. All loans are subject to the bank's normal lending criteria. Fees, charges, terms and conditions apply and are subject to change. Credit provided by Bendigo and Adelaide Bank Limited ABN 11 068 049 178 Australian Credit Licence 237879. A1963170. OUT_40196389, 06/09/2024

Welshpool Golf Club

A great weekend of golf was held. On Friday 11 players competed for the chook with Stevo winning with 16 points on a countback from Pappy also on 16 points. Sherelle Roberts also got a BDL with 15 points and Stevo had a nearest the pin on the 8th.

On Saturday the men played a 4BBB comp with Nino (welcome back mate) and Brownly taking out the prize with 37 points on a countback from Grubby and Harry getting a BDL. Russ got a ball for a NTP on the 8th.

On Sunday was the Mick Platt Day with a great field competing. The winner with 31 points for the men was Pappy and he'd be happy with the bottle of Whisky (thanks to the Platt Family for donating the prizes). BDL went to Harry, Brownly and Nino. Sherelle won the womens with a handy 34 points and Sue getting a BDL.

Thanks to the Platt family for sponsoring the day and hopefully we see more of you playing Rick & Joe.

Thanks also to Stevo and his band of friends who contributed to the bar takings on Saturday as well.



You can now collect FREE firewood for personal use from state forest firewood collection areas until November 30!

Find your local collection spot at <https://www.ffm.vic.gov.au/.../firewood-collection-in...>

Remember to follow the rules:

- 📍 Only collect from designated areas
- 📏 Limit: 2 cubic metres per person per day
- 🌳 Max: 16 cubic metres per household per financial year

We're here to support those on low incomes who rely on firewood for heating and cooking 🍷

For financial assistance to buy firewood, check out www.ffm.vic.gov.au/firewood/energy-concession-and-support



**SPRING FIREWOOD
COLLECTION SEASON
IS NOW OPEN**

Promontory Produce & Craft Market Inc.

MARKET BOOKINGS TO
P.O. BOX 180, FOSTER, 3960

MARKET ENQUIRIES 0439 033 960

*The Biggest and Best Craft
Markets in Gippsland
200 Stalls around
the oval at
FOSTER SHOWGROUNDS
2024-2025*

SUNDAY, NOVEMBER 3rd

SUNDAY, DECEMBER 8th

SUNDAY, DECEMBER 29th
(New Year's Weekend)

SUNDAY, JANUARY 26th
(Australia Day weekend)

SUNDAY, MARCH 9th
(Labour Day weekend)

SUNDAY, APRIL 20th
(Easter Sunday)

8am - 1.00pm

Market Entry: \$2 adult cash, children free



No dogs allowed

The Port Welshpool & District Maritime Museum

Every day Newspapers, Magazines and books are brought borrowed and donated to help us understand, learn or just purely for relaxation as we sit in the sun to soak up some warmth away from the chills of the day. As we look into history and read about days gone by, many questions can be asked of the area we live in and we question in wonder "What is their story" or "I wonder what use to be there". As we watch many dwellings at Port Welshpool take on a new look as they are transformed into a new chapter in their lives, you look back and remember how they used to be and who lived there. Land that stood vacant for many years is now being purchased to build a dream holiday home where a dream can be fulfilled for a retiree to enjoy seaside living. As you watch this happening you see the old slipping away and new history being born. We watch with excitement as the hotel takes on a new chapter in its life and become a welcome addition for all to enjoy, we cast our minds back to when that land was a tidal flat and a short cut to the General store. Across the road another landmark once stood. Many can't imagine a knife factory once chugged away on this block and was world renowned for its products. Then there are others that stay hidden hoping to be noticed in the not-too-distant future as the elements of Mother Nature slowly takes its toll before renovations are not an option because the cost is too great and it's cheaper to knock down and then all is lost. One such building is the once very popular Kiosk that stood proudly at the beach side of the Long Jetty Caravan Park and helping everyone with their needs as they spent the day at the beach. If only this building could speak maybe its first cry would be "What about me" as it watches the activity going on around it. Lots of changes have happened at the Caravan Park but this building has been ignored, sadly. The Long Jetty has had many changes too; from boats being slipped, cattle boat from Tasmania unloading there and sadly disasters to facing many years of neglect but thanks of many loud persistent voices, the rebuild has been very welcome. Maybe one day before it gets beyond saving that forgotten Kiosk and all its history will come alive, with photos on display to show how it was once an important part of the area and can be productive again for the many visitors to the area.

NEW VOLUNTEERS WANTED.

The Museum Committee are always looking for new volunteers.

If you are able to give us a few hours of your time we would love to welcome you aboard. Give Janet a call and have a chat, 0413199776. You don't have to know the area, just being a part of history can be very fulfilling.



Healthier Ways Forward

A 6 week program for seniors living in the Corner Inlet Area.

What Is It?

'Healthier Ways Forward' is a short term program, designed to help people gain a better awareness of how nutrition and movement can improve overall health, especially as we get older.

What Does It Involve?

Healthier Ways Forward is run by a Physiotherapist and a Dietitian.

Topics presented include:

- Healthy eating for healthy ageing
- Basics of falls prevention
- Healthy eating for strong bones
- Moving your body, and chronic disease
- Gut health
- Getting back into exercise

When Is It?

Fridays, 2pm to 3pm.

- Starting Friday 18th October.

Where?

'Healthier Ways Forward' is held at Mannagum Community House.
33 Station Road. Foster. 3960

How Do I Join?

Call Justine Kleeman on PH: 5683 9782 to register.

How Much Does it Cost?

'Healthier Ways Forward' is free to anyone aged over 65 years or over 50 years if you are Aboriginal and/or Torres Strait Islander.

South Gippsland Hospital 87 Station Road, Foster call 5683 9780 www.southgippslandhospital.org.au

phn
SOUTH GIPPSLAND
HOSPITAL

South Gippsland Hospital

Manna Gum Community House Christmas Gift Drive

Drop off donation point
HERE

Before 5th December 2024.

Volunteers from Vinnies and Manna Gum will collect the donations and distribute accordingly around our local Gippsland area.

Please remember that Christmas is for everybody, gifts gladly accepted for all age groups.
Vouchers enable the recipient to purchase something they need, or even a gift for a loved one they couldn't otherwise purchase.

~Local Businesses Preferred~

~Please Do Not Wrap Gifts~

Online donations through Give Now, see our Facebook page for the link
Cash Donations accepted at our Manna Gum Office or at our local Bendigo Bank Branches



Welshpool Recreation Reserve

This year the Welshpool Recreation Reserve will host the Welshpool Lawn Mower Race Day on Saturday 14th December. Members from the Australian Ride On Lawn Mower Racing Association will show us their skills on the track, with the A Class mowers having motors up to 450cc.

With some exciting action on the track, we will also have plenty of activities for everyone including market stalls, rides, an animal nursery, face painters, raffle and more. The canteen will be open with a range of food available as well as the Toora Lions Club helping with the BBQ. Big Bears Donuts will also be attending with their coffee and donut truck.

Racing will start at 10am running through to around 3pm. Following trophy presentation and the raffle draw we will have live music from 'Duffy' until around 5pm. Kick back, relax and make a full day of it with your family and friends.

Unlike many of the recreation reserves within the South Gippsland Shire, the Welshpool Recreation Reserve is community owned. Please help continue to keep this community facility running by supporting us and coming along, it will be a great family day out and you will be helping us along the way. Look forward to seeing you all.

Annual General Meeting
Monday 28th October
7pm at the Rec Reserve
New Members Welcome

Welshpool Recreation Reserve Committee presents

Saturday 14th December

Lawn Mower Races

Races Start 10am

Jumping Castle
Inflatable Slide
Animal Nursery
Face Painting
market stalls
& more

Arthur Sutherland
Recreation Reserve
Port Welshpool Rd
Welshpool

RACING

Welshpool Recreation Reserve

Entry : \$5 per person, \$15 family
All day rides pass \$10

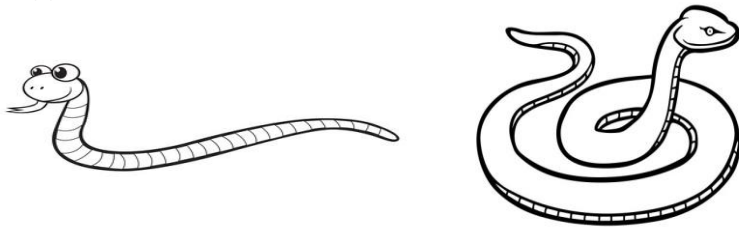


Snakes are slithering out! 🌱☀️

As temperatures rise, snakes are emerging from their winter inactivity. Here's what you need to know:

- 🛠️ Keep your yard tidy and keep your grass cut low.
- 🩹 Have a first aid kit ready with compression bandages.
- 🐾 Give snakes space, if you see one, calmly leave the area with pets and children.
- ☎️ Call DEECA on 136 186 for advice on snake controllers in your area.
- 🚑 If someone is bitten, call 000 immediately!

Snakes are generally harmless when left alone. Let's coexist peacefully with these fascinating creatures!
Snakes are protected under the Wildlife Act 1975 and it is illegal to harm them or capture them without authority.
If you suspect wildlife crime, you can make a report with Crime Stoppers Victoria on 1800 333 000.



Petition for Support to build a Toilet Block at the Long Jetty.



If you would like to show your support of the building of a toilet block at Port Welshpool Jetty, please pop into one of the local businesses' and sign your name. This petition will be put forward to council by members of the **Welshpool Area Future Focus Group** and the **Port Welshpool Working Group**.

E.W. & H.P. FOWLER WELSHPOOL OUTDOORS & ORIGIN GAS SUPPLIES

19 MAIN STREET
WELSHPOOL VIC 3966
PH: 0356881304

welshpooloutdoors@bigpond.com

**NEW IN STORE
ENQUIRE NOW**

**2024
AUSTRALIA**



Welshpool & District Horticultural Society Inc.

64th SPRING SHOW - 2024

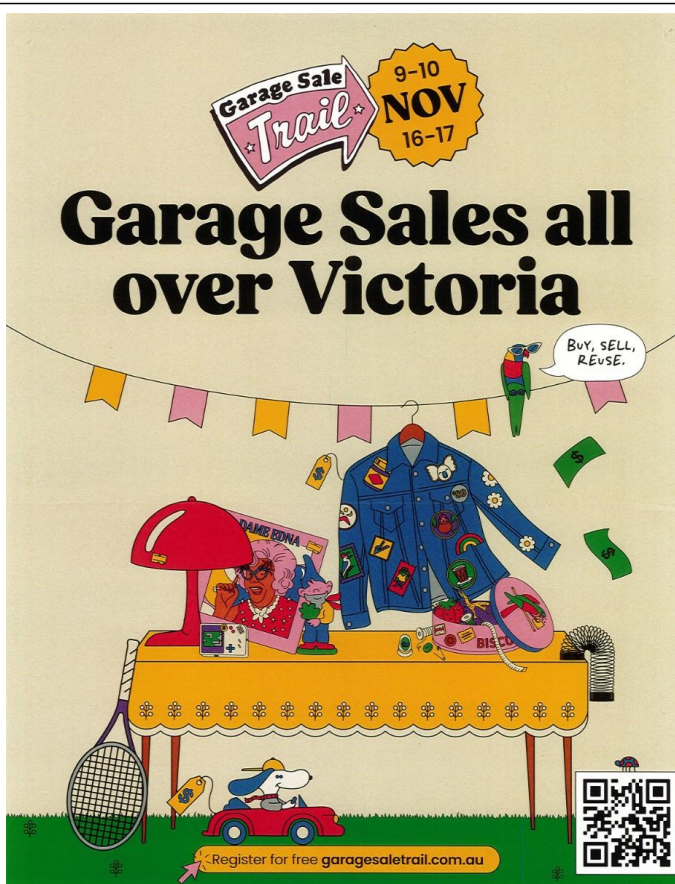
Spring Wedding

Friday 1st Nov 1:30pm - 5pm
Official Opening at 2pm

Saturday 2nd Nov 10am - 4pm

Welshpool Memorial Hall, South Gippsland Hwy, Victoria
Admission \$5, Children free, Cash Only
Plants for sale from onsite Club Nursery

Show Secretary - Frances Grylls 0481 385 122 | Email: pruefleming@bigpond.com
Assistant Show Secretary - Prue Fleming 0418 775 717 | Entries Notified to Prue by 6pm Wednesday Oct 30th



Made locally possible by:
South Gippsland Shire Council



**JBN
CAR CLEANING**



0428683533

service list

Exterior Clean

Interior Clean

Basic to Ultimate Options

Sedans, Wagons, SUV, 4WD.

Utes

Gift Vouchers Available

Price List Available

Servicing Yarram to Fish Creek

Friday, Saturday or Sunday



**Driving
Miss Daisy®**
We're There For You

Alice Filon

Independent Franchise Owner
Gippsland

**For Enquiries & Bookings
Call: 0492 122 024**

E: gippsland@drivingmissdaisy.com.au



www.drivingmissdaisy.com.au

Companion driving for: Medical appointments,
Hairdresser, Shopping, Scenic drives, Airport/rail/bus
transfer, Pets to vet, School & children's activities

Danny O'BRIEN MP
Member for Gippsland South

📍 54B Cunninghame St, Sale VIC 3853

☎ 03 5144 1987

✉ danny.obrien@parliament.vic.gov.au

🌐 www.dannyobrienmp.com.au

Working for Gippsland South

[f](#) [t](#) [i](#) /dannyobrienmp

THE NATIONALS for Regional Victoria



Mainly music

Hi come n check out this great music program
Fridays 9:30. Actions, drama, dance learning
numbers etc.

Cost \$3 per family. Morning tea provided for
parents n littles. 150 commercial rd yarram. All
preschool parents n carers welcome.



Welshpool Supermarket & Café

Pies, pasties, sandwiches & salads
home-made slices & muffins.
Hot & cold drinks & more

TRADING HOURS

Monday – Friday 7am to 4pm

Saturday 9am to 2pm

CLOSED SUNDAY



WELSHPOOL CEMETERY TRUST

CHAIRPERSON

DAVID GRILLS

0428 858 961

FOSTER SEAFOODS



35 Main Street, Foster

Ph: (03) 5682 2815

With catches of Inlet fish arriving within the shop on a
daily basis and our vessels returning from extended trips
into Bass Strait, you can be assured that the quality is
second to none.

We also have an extensive list of products with very
competitive prices.

Port Welshpool and District Bowling Club

Contact Angela Tisler 0448440153

portwelshpoolbc@gmail.com

22 Bowling Club Rd

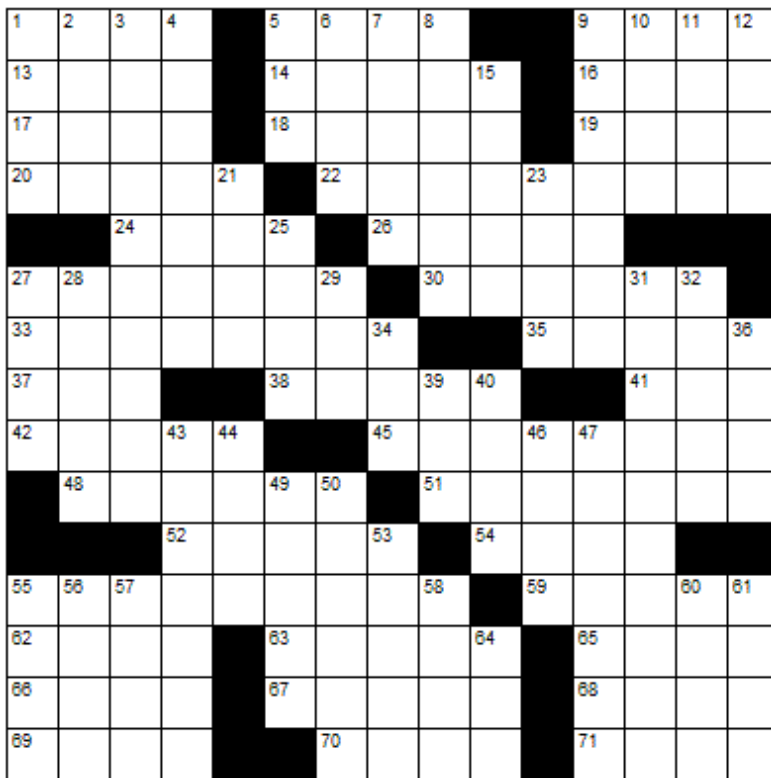
(Left of the Long Jetty along the foreshore)
Social and Barefoot Bowls Fridays during the
bowls season (Oct - end of April) from
4:30pm.

Bowls provided.

Bar service available. BBQ & Salad dinners
available most weeks at 6:30pm

**NEW MEMBERS AND BOWLERS MOST
WELCOME**

CROSSWORD



Down

1. French for "State"
2. Handout
3. Certain dark-colored igneous rocks
4. A Christian recluse
5. Confederate soldier
6. Relating to urine
7. Meddle
8. Foursome
9. Refuse to do business with
10. Component of urine
11. Leave in a hurry
12. Rabbit
15. Fry briefly
21. Stigma
23. Tastes
25. Goddess of discord
27. Disable
28. Anagram of "Urban"
29. Put clothing on
31. Green chalcedony
32. Hoisting device
34. Tear
36. Jittery
39. Spy agency
40. Gambling game
43. Stalemate
44. A heavy open wagon
46. Adult male sheep
47. Snipped
49. Requires
50. Erase
53. Appointed
55. Wan
56. Beers
57. Badgers
58. Only
60. District
61. Adolescent
64. Indian bread

Across

1. Border
5. Iron oxide
9. Shrub
13. Unit of pressure
14. Sea eagles
16. Killer whale
17. Away from the wind
18. Flora and fauna
19. 365 days
20. Abounds
22. Scintillate
24. Agreeable
26. Terrace
27. Condiment
30. The deepest and most remote part
33. Toward the front
35. Inscribed pillar
37. Nigerian tribesman
38. A small cut
41. Cover
42. Frenzied
45. Stabbing
48. Incarcerate
51. Drawing a comparison
52. Primp
54. Leave out
55. Long slender cigars
59. Small fatty European fish
62. "Oh my!"
63. An evil supernatural being
65. Minute opening
66. Lower limbs
67. Grave marker
68. Type of sword
69. To be, in old Rome
70. Biblical garden
71. Prefect



Winning entry will receive a free coffee and cake from the Welshpool Café & Supermarket



Sponsored by: **Welshpool Supermarket**

**Entries must be received before
15th November**

All correct entries will be put into a hat and the winner will be drawn by Supermarket staff. No correspondence will be entered into etc.

Please remember to double-check your spelling.

Remember to include your name, contact number and date on your returned entry, Thank you.

Winner of the September Crossword:

Sue Agar



LAST MONTHS CROSSWORD RESULT

S	O	F	A		S	W	A	B		U	S	E	D
A	D	A	R		S	A	L	O	N		T	A	K
G	E	T	S		T	I	A	R	A		E	V	E
A	S	H	E	S		F	R	E	S	H	N	E	S
					O	N	E	S		M	A	T	E
A	D	M	I	R	A	L		L	Y	R	I	C	S
B	R	A	C	E	L	E	T			A	L	O	H
R	U	B			T	E	A	R	S			G	A
I	G	L	O	O			R	I	N	G	S	I	D
	S	E	C	R	E	T		D	I	L	U	T	E
					T	A	X	E	S		T	U	N
R	E	T	A	L	I	A	T	E		E	S	T	E
A	G	O	G			S	M	A	L	L		P	I
T	A	R	O			T	E	R	S	E		O	V
E	D	E	N				D	E	E	D		T	E

GIPPSLAND OFFSHORE WIND DAYS

Come along in
November and meet
the developers behind
Gippsland's proposed
offshore wind projects



GIPPSLAND OFFSHORE WIND DAYS

**NOV
8**

SEASPRAY - 4:30 - 6:30 pm
Seaspray Surf Life Saving Club

**NOV
13**

FOSTER - 3:00 - 6:00 pm
Manna Gum Community House

**NOV
14**

TRARALGON - 4:00 - 6:00 pm
Gippsland Performing Arts Centre

**NOV
23**

YARRAM - 8:30 am - 3:30 pm
Yarram Agricultural Show

TABLE TENNIS

WELSHPOOL MEMORIAL HALL

Please join us for a friendly social hit of
table tennis

Wednesday 6.30pm-8.30pm

Entry is only \$2 per session

Please contact JJ on 0400 114 905

for all enquiries

All equipment supplied

All ages, all levels welcome!



Carpet Bowls

Old Ferry Terminal, Port Welshpool

Come along for a fun afternoon of
Carpet Bowls

No membership

or equipment required,
everything is supplied for you.

Every Tuesday afternoon:

12.30 - 3.00pm

\$5 per session followed by tea,
coffee, biscuits and a chat.

Everyone welcome!



LOCAL SERVICES.....

How can we help?

For information and assistance:


- 9 Smith Street, Leongatha VIC 3953
- 5662 9200
- council@southgippsland.vic.gov.au
- www.southgippsland.vic.gov.au
- Facebook: southgippslandshirecouncil



**Snap
Send
Solve**

Did you know that
you can report
something that
needs fixing via
Snap, Send, Solve?

Simply download
the app from the App
Store or Google Play
and start reporting



AAC MOBILE
AUTO AIR
CONDITIONING

Maintenance & Repairs to...

TRUCKS * TRACTORS * MACHINERY * PASSENGER & FOOD TRANSPORT VEHICLES

Ian Dubignon **M. 0448 761 642**

aacautoair.com.au

WELSHPOOL CRANES

0428 171 666

Mobile Crane
Dogmen
Piggers

Gary Mason

info@gmmason.com.au



THROCKMORTON SERVICES PTY LTD
**BUILDING MAINTENANCE
& CARPENTRY**

Email: throckmorton@bigpond.com

Mb: 0417 582 918

ABN 72 875 167 020



John Hoy
Trade qualified Farrier
(25 years experience)

0447 229 390

ALBERTON TIMBER
& TREATMENT PLANT P/L

FOR ALL YOUR TREATED PINE NEEDS

POSTS SAWN TIMBER DECKING CUSTOM TREATING
SLEEPERS NUTS AND BOLTS PALINGS AND MORE

SOUTH GIPPSLAND HIGHWAY, ALBERTON, VIC, 3971

Ph (03) 5183 2437

Fax (03) 5183 2659

Email sales@albertontimber.com.au

CONCRETER

Delivering Quality Concrete Services for
Residential, Commercial & Farm Upgrades.



CALL KANE
TODAY FOR A
FREE ON-SITE
CONSULTATION

5613 2013 | 0400 840 729

E: admin@sgconcrete.com.au

W: www.sgconcrete.com.au

SOUTH GIPPSLAND SEPTIC TANK CLEANING

Also Portable Toilets Hire

Call Chris Whittle

(03) 5688 1572



TV DATA PHONE

Digital Antennas, Masts, Repairs. TV Wall Mounts,
Speakers, Home Theatre & Hidden Wiring. WIFI.
Cameras & Security Systems. Phone & Computer
Outlets. Networks. Satellite Dish and Receivers, VAST
and StarLink. Mobile B.B. Antennas. Test and Tagging.

Licensed Cable & Security Installer
Domestic, Commercial & Industrial
Steve Mooney 0427 257 222

Kirwan Builders

TK Construction

"for all your building needs"

TK Construction - Michael Kirwan

6565 South Gippsland Highway HEDLEY VIC 3967

P: 03 5184 1223 | M: 0428 911 900

E: kirwanbuilders@gmail.com

HIA MEMBERSHIP: 813 711 | DB-U: 20399 | A.B.N: 40 896 158 242

Gatt's Tile Roof Restorations

We cater for everything roofing

- Pressure washing -Roof painting
- Repointing tile roofs -Install gutter guard
- Replace broken tiles -Repair leaks.

-External high pressure washing of:

- *Houses *Buildings
- *Driveways *Gutters



Port Welshpool workshop

Morwell workshop

Please phone 0434 725 536

All work is done by tradesmen

Fully insured and WorkSafe approved.



Port Welshpool & District Museum



The building that houses the collection was designed and built by John Avery in 1881 for W.B.M. Smith. Being the first large home in the village, it became the unofficial community centre, conducting dances, weddings, church services and even a wine salon.

ADMISSION CHARGES

Adults	\$5
Pensioner	\$4
Student	\$2
Family	\$10

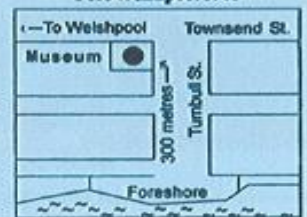
Cnr. Townsend & Turnbull Streets
Port Welshpool 3965

Opening Hours 12.30pm - 3.30pm
Sat, Sun, Public Holidays
and by Appointment.

or call the Museum Secretary
Janet Taylor 0413 199 776

Website - ptwelshpoolmuseum.wixsite.com/pw-museum

Group visits are welcomed.



ANTHONY BRAVINGTON

Cleaning & Property Maintenance Contractor

- Commercial Cleaning, Domestic Cleaning and all types of Property Maintenance
- Accommodation Contracts
- Office Building Contracts
- Retail Shops Contracts
- School Cleaning Contracts
- Builders Cleans
- All Property Maintenance etc
- Window Cleaning
- Carpet Steam Cleaning



THURSDAYS & FRIDAYS ONLY

1 bedroom house	\$70
2 bedroom house	\$90
3 bedroom house	\$120
4 bedroom house	\$150

Call Anthony for all your cleaning needs

Mobile: 0418 146 986

Email: bravtecleaning@gmail.com

RON LEACH

CALF BUYING

Mondays & Thursdays

Top Prices

Also buying friesland heifers
& other small beef stock

Call 0429 881 464

Word search grid containing Halloween-themed words.

BAT
BROOMSTICK
CANDY
CAT
COSTUME
CREEPY
DRACULA
FANGS
FRANKENSTEIN
GHOST
GHOUL
HAUNTED
MAGIC
MASK
MONSTER
MUMMY
OCTOBER
POTION
PUMPKIN
SCARECROW
SKELETON
SKULL
SLIMY
SPIDER
SPOOKY
TREAT
TRICK
WEREWOLF
WITCH

The Month Of October

BIRTH STONE

OPAL

BIRTH FLOWER

MARIGOLD

STAR SIGNS

LIBRA & SCORPIO

Personality

People born in October have the ability to maintain a great balance around them and know how to tackle things diplomatically. They are the ones who rarely get into heated arguments and are the ones who survive wild parties easily. Their calm nature and strong resolve make them great thinkers.

Did you know...?

- Daylight Savings Time ends every year at 2am on the last Sunday of October.
- The Beatles' first single, *Love Me Do* backed with *P.S. I Love You*, was released in October 1963.
- October was originally the 8th month in the Roman Calendar until it was switched to the Gregorian Calendar where it became the 10th month. While it is still named 'October' after the Latin numeral 'Octo', meaning eight, it is now known as the 10th month in the calendars we use every day.

Special Days

06 OCTOBER	13 OCTOBER	25 OCTOBER	31 OCTOBER
National Badger Day	National No Bra Day	World Pasta Day	Halloween

Famous October Birthdays

Simon Cowell, Bruno Mars, Eminem, Hilary Clinton, Bill Gates, Frank Ocean, Katy Perry, Christopher Columbus, John Lennon, Pablo Picasso, Teddy Roosevelt, Kate Winslet, Sadiq Khan, Samuel Taylor Coleridge, John Keats, Eleanor Roosevelt, Mahalia Jackson, Sylvia Plath, Buster Keaton, Zach Galifianakis, Sting, Gwen Stefani, Matt Damon, Emily Proctor, Hugh Jackman, Josh Hutcherson.

Why did the ghost go to the bar?

For the boos!

OCTOBER

BREAST CANCER AWARENESS MONTH

4 TIPS

to help detect breast cancer early:

Know what's normal for you

Self-exam every month

Visit doctor regularly

Mammograms

©pinkribbongood