

Corner Inlet Stingrays



Congratulations to our local junior football club on a fantastic season, a special mention to the U10's team on taking home the premiership. They went into the Grand Final against Moe as the undefeated raging hot favourites and played like absolute superstars leaving a score of 19-9.



Toora Netball Club

On Saturday 14th September, the under 17s Toora netball team played the Grand Final against Boolarra. The girls fought back from being 8 points down, to end the game on a tie. With extra time played the girls unfortunately just ran out of time and went down by one point, final score Boolarra 47 to Toora 46.

The girls gave it their all and it was a fantastic game to watch. It was a tough loss but getting this far was a huge achievement. Everyone is incredibly proud of you all.



Disclaimer

This newsletter is an independent self-funded publication produced by staff and volunteers of the RTC and it does not reflect the opinions of the Committee members, South Gippsland Shire, or the Department of Planning and Community Development.



TRADING HOURS
MON, WED, THU, & FRI
10.00AM - 3.00PM
PHONE 5688 1087

- WELSHPOOL COMMUNITY LIBRARY
- BENDIGO BANK AGENCY
- SERVICES AUSTRALIA AGENCY
- V/LINE TICKETING OFFICE
- ROOM HIRE AVAILABLE
- PASSPORT APPLICATIONS
- COPY & PRINT SERVICES
- BISLEY WORKWEAR

Other services by appointment only

- Gibson Accounting – 5176 2031



**VLINE
 BUS
 SERVICES**

**Purchase tickets at the
 Rural Transaction Centre or
 collect a VLINE Bus Timetable**

Agent

At a Services Australia Agent you can:

- USE OUR COMPUTER to access my.gov.au and other government services and information
- USE OUR PHONE to access the agency's self service options or to speak with us
- ACCESS FREE Wi-Fi 24/7 to connect to government services – no password required
- USE OUR EQUIPMENT to upload, print and photocopy documents
- GET YOUR IDENTITY DOCUMENTS CERTIFIED

Agents can:

- help you to set up and access digital services
- help you find information online about payments and services
- arrange referrals to specialist services.

Agents can't:

- access your records
- make decisions about or change your payments or debts
- issue a Medicare card or Health Care Card
- do customer interviews
- contact the agency to get information about your payments or entitlements, without your permission.

Agents aren't Services Australia staff.

Your local Agent is:

Welshpool & District Advisory Group Inc

Address:
 14 Main St, WELSHPOOL

10am-3pm Monday,
 Wednesday, Thursday &
 Friday's

Self service

You can use myGov to access your Centrelink, Medicare and Child Support online accounts. Go to my.gov.au

You can also access our services through the Express Plus mobile apps. For more information go to servicesaustralia.gov.au/selfservice

Online Services Support Hotline

myGov Helpdesk 132 307 select option 1
 Centrelink Helpdesk 132 307 select option 2

Centrelink phone self service

Phone self service 136 240
 Report income and update your obligation requirements 133 276

For help in other languages

Centrelink 131 202
 Medicare and Child Support 131 450

How to contact us

ABSTUDY Freecall™ 1800 132 317
 Assistance for Isolated Children 132 318
 BasicsCard balance enquiry Freecall™ 1800 057 111
 BasicsCard and Income Management Freecall™ 1800 132 594
 Centrelink debt recovery Freecall™ 1800 076 072
 Centrelink Indigenous Call Centre Freecall™ 1800 136 380
 Child Support 131 272
 Complaints and feedback Freecall™ 1800 132 468
 Disability, sickness and carers 132 717
 Families 136 150
 Farmers and their partners 132 316
 Financial Information Service 132 300
 Grandparent Advisers Freecall™ 1800 245 965
 Indigenous debt recovery Freecall™ 1800 138 193
 Job seekers 132 850
 Low Income Health Care Card 132 490
 Medicare 132 011
 Medicare Aboriginal and Torres Strait Islander Access Line Freecall™ 1800 556 955
 National Redress Scheme Freecall™ 1800 737 377
 Older Australians 132 300
 Youth and students 132 490
 TTY enquiries Freecall™ 1800 810 586
 TTY is only for people who are deaf or have a hearing or speech impairment. A TTY phone is required to use this service.



servicesaustralia.gov.au

Working from home and need a change of scenery? Office Space available to rent at Welshpool Rural Transaction Centre.

Mondays, Thursdays, and Fridays.

Contact us on **5688 1087** for more information.



Gibson Accounting

Kieran Olree

PH: (03) 5176 2031

Fax: (03) 5174 6313

101 Hotham Street
 Traralgon, Vic 3844

Email: kieran@gibsonaccounting.com.au

Kieran Olree is at the RTC every Wednesday

By appointment only - **(03) 5176 2031**

For more information and all the latest tax updates and handy hints for tax time, please visit Gibson's website:

www.gibsonaccounting.com.au

Welshpool Basketball Association



What a great start to our 2024 season! It has been great to see so many families return as well as welcoming new families and players. We started the season with a great turnout for our skills session despite the challenging weather. Players, especially our Mini's, had the opportunity to get to know one another, train together and familiarise themselves with their coaches. We would like to thank the parents and committee members for running a great session.

The Norris's saved \$5,772 last year on their home loan!*

All over Australia, homeowners are saving money with a free home loan health check.

How much could you save?

📍 Welshpool Agency 5688 1087

Bendigo Bank

*Amount saved was annual payments reduction on an owner-occupier home loan when repayments dropped by \$481 a month from lower interest rate and loan restructure. Actual savings will depend on individual circumstances. All loans are subject to the bank's normal lending criteria. Fees, charges, terms and conditions apply and are subject to change. Credit provided by Bendigo and Adelaide Bank Limited ABN 11 068 049 178 Australian Credit Licence 237879. A1963170 OUT. 40196389. 06/09/2024

Welshpool & District Primary School



Last Tuesday we had a visit from author Sofie Laguna. She explained to students that she has kept a diary since she was seven years old when her grandmother bought her a blank book as a gift. She showed students the first drafts of her many books all contained within her diaries. Using her books as a springboard, Sofie discussed the importance of character in her own writing. She examines the different ways we can create strong characters and their importance in building a compelling story. Students enjoyed listening to and looking at her range of books.



Parents & Friends Association (PFA)

Thanks to everyone who supported our Father's Day raffle with a special thanks to Welshpool Outdoors & Welshpool Hotel for their very generous donations. We made a total of \$874.00 to go towards our redevelopment of our basketball court.



A variety of Bisley wear available to purchase. Orders can be placed if we don't have your size.

Call in to view our range
14 Main Street Welshpool

We have changed the way we bring you the community newsletter. Our monthly newsletters will be available in print at the Rural Transaction Centre and other shops within Welshpool.

Coloured copies will also be available to view on Facebook at **Welshpool RTC** or you can request a copy direct to your email.

To sign up to our mailing list, contact us on rtcwelshpool@bigpond.com, call us on 5688 1087 or call in to the RTC



Be yourself, everyone
else is already taken.

OSCAR WILDE

Southern Living

Community Bank
Toora, Foster and
Welshpool

Bendigo Bank

Welshpool Agency

14 Main Street Welshpool

Monday, Wednesday, Thursday & Friday

10am to 3pm

PH: 5688 1087



IMPORTANT INFORMATION

Please be advised that until further notice, the Welshpool Rural Transaction Centre will be closed on Tuesdays. We apologise for the inconvenience this may cause and we thank you for your patience and understanding.

Your closest Bendigo Bank Branch is Toora operating from 10am-3pm.

Myli – My Community Library

Join today at the Rural Transaction Centre and have access to a variety of books, audio books, DVD's and more. If it's not on the shelf it can be ordered in. Open Monday, Wednesday, Thursday and Friday 10am to 3pm. A Librarian also attends every Wednesday 12noon to 2pm for any assistance required.



Welshpool Op Shop & Nursery

Monday to Friday

Ph: 0417 367 629

10am – 4pm

Saturday 10am – 2pm



Call in and find yourself a bargain.

Plenty of clothes available.

Men's, ladies and children's clothes
of all sizes. Fill a shopping bag for
just \$7!!



All Books

\$1 each



WANTED

*Missing Oil Painting, of Simpson Gap,
was accidentally donated to either Foster
or Welshpool Op Shops in Jan-Feb*



*Not valuable but has personal
sentimental value to us*

PH Christine 0419 917 073

Or Nora 0427 040 576

REWARD OFFERED



Do you love to craft?

The Welshpool Op Shop have a huge variety of craft items, including knitting needles, wool, beads, buttons, a great selection of materials and much more. Call in to see our stock.



South Gippsland Shire Council News

Changed Customer Service Counter Opening

Council is extending its customer service offerings with a new location in Korumburra. This means that more parts of our community can access Council's services locally.

The new counter will provide residents with a second location to access Council information, log service requests, submit registrations and make payments. The counter will be staffed by Council's existing customer service team who will work between the two locations.

From 30 September Council's customer service counter days will change to the following:

Leongatha: Mondays and Wednesdays
10.00am to 3.00pm

Korumburra: Tuesdays and Thursdays
10.00am to 3.00pm

Closed: Both counters will be closed on Fridays.

There will be no change to phone-based services which will continue to be available Monday to Friday between 8.30am and 5.00pm. Council's website is also available 24/7.

A soft opening of the Korumburra counter is currently underway. Please drop in and say 'hello'.

Until the 30 September the Leongatha counter will operate Monday to Thursday from 10.00am to 3.00pm.

Find out more and view our FAQs at:
<https://www.southgippsland.vic.gov.au/customerservicecounter>

SOUTH GIPPSLAND SHIRE COUNCIL
Rates Notices



Rates notices have now been sent via post and email to South Gippsland residents and property owners.

Rates help to provide a number of services to our local community. You might not need or use all of the services at every stage or your life, but paying rates helps to ensure our local communities remain vibrant and well-served.

If you have questions about your rates notices, please contact Council's rates team. Payment plans and assistance is also available. For more information, please go to:

www.southgippsland.vic.gov.au/rates

You can now collect FREE firewood for personal use from state forest firewood collection areas until November 30!

Find your local collection spot at <https://www.ffm.vic.gov.au/.../firewood-collection-in...>

Remember to follow the rules:

📍 Only collect from designated areas

📏 Limit: 2 cubic metres per person per day

🌳 Max: 16 cubic metres per household per financial year

We're here to support those on low incomes who rely on firewood for heating and cooking 🍷

For financial assistance to buy firewood, check out www.ffm.vic.gov.au/firewood/energy-concession-and-support



**SPRING FIREWOOD
COLLECTION SEASON
IS NOW OPEN**

Promontory Produce & Craft Market Inc.

MARKET BOOKINGS TO
P.O. BOX 180, FOSTER, 3960

MARKET ENQUIRIES 0439 033 960

*The Biggest and Best Craft
Markets in Gippsland*
*200 Stalls around
the oval at*
**FOSTER SHOWGROUNDS
2024-2025**

SUNDAY, NOVEMBER 3rd

SUNDAY, DECEMBER 8th

SUNDAY, DECEMBER 29th
(New Year's Weekend)

SUNDAY, JANUARY 26th
(Australia Day weekend)

SUNDAY, MARCH 9th
(Labour Day weekend)

SUNDAY, APRIL 20th
(Easter Sunday)

8am - 1.00pm

Market Entry: \$2 adult cash, children free



No dogs allowed

The Port Welshpool & District Maritime Museum

The calendar says winter is now behind us, even though the chill in the wind we think otherwise as we face spring and all the joys it has. We watch as lambs frolicking in the paddocks, and we listen to the birds chirping to let us know that the season is changing. Our garden fills us with surprises as the bulbs we may have forgotten about rise through the earth and the blossom on the trees keep us in wonder of what will the yield be or will the birds and the possums rob us while we sleep. Colour and sunshine are what we crave to help raise our spirits after the windy, cold weather Mother Nature has shown us recently. The gale force winds that brought down ageing large trees, and tore some buildings apart was a devastation to once again test our community spirits. The sad part is the buildings that just couldn't win the fight. Remember when in times gone by, during the winter months, it was a way of life to have power outages for which there was always kerosene lamps and candles on hand just in case. September brings school holidays, Father's Day and to us passionate football supporters the finals. As with most things over the years we have watched the changes to the football code. We have gone from woollen jumpers to synthetic; the footwear has gone from a leather boot with wooden stops to a boot like a jogger. No more only black or white shorts and to add to the progress, who would have guessed, the ball is being tested with a microchip, and importantly don't forget to put it on charge when the game is over. Who would have thought? At the Museum we are once again open to welcome you through the doors after our Winter break.

Saturday and Sunday Open Hours 12.30 to 4.30pm.

If you are a member of a club that would like to have a group visit during the week we can arrange, just give Janet a call 0413199776.

After a very successful day a couple of years ago we are holding another

"PHOTO and STORY SHARING DAY to GATHER HISTORY"

Check your draws and memories as we would love for you to join us to share what you have so history can be preserved.

If you are new to the area, come join the community over a cuppa and cake and learn of the interesting history of the port we share, that once harboured a proud fishing fleet, a knife factory, school and more.

We will have local history books on sale, a raffle, photos on display and if you bring photos along to share, local photographer Keith Haycroft will be there to help.

Entry is a gold coin donation.

WHEN: Wednesday 2nd October

WHERE: The Old Ferry Terminal, Port Welshpool

TIME: from 1pm



Esso's decommissioning of platforms in Bass Strait



An ExxonMobil Brand

Esso Australia Pty Ltd (Esso), a wholly owned subsidiary of ExxonMobil Australia Pty Ltd, is committed to operating and decommissioning its' Gippsland and Bass Strait facilities safely and effectively.

After delivering energy to Australia for over 50 years, many of the Bass Strait oil fields are now reaching the end of their productive life. As planning for decommissioning progresses, Esso is focused on safely shutting-down non-producing facilities and ensuring they stay safe throughout the entire decommissioning process.

Community Information Session and Drop-in

If you'd like to know more about activity plans for **Decommissioning of platforms and pipelines in Bass Strait**, the Esso Consultation Team will be hosting a community information session and drop-in at the following locations:

Wednesday 25 September 2024 - Welshpool

Welshpool Memorial Hall
49 Main Street, Welshpool
10.00 am – 1.00 pm

Wednesday, 25 September 2024 - Leongatha

South Gippsland Trade Skills Alliance (SGBLEN)
71 Ogilvy St., Leongatha
3.00 pm – 7.00 pm

Thursday, 26 September 2024 - Foster

Manna Gum Community House
33 Station Street, Foster
3.00 pm – 7.00 pm

A presentation about decommissioning activities will be provided at 11.00 am for the AM sessions and 3.30 pm and 5.30 pm for the PM sessions. We encourage you to come along and ask questions or to raise any concerns you may have.

To register your attendance, please email us at:
consultation@exxonmobil.com

If these dates and times don't suit, please contact us at
consultation@exxonmobil.com or by phone on 03 9261 0000.

The Esso Consultation Team will also be available to discuss all current activities, including:

- Bass Strait Decommissioning
- Jack-Up-Rig Well Plug and Abandonment

- Gippsland Basin Geophysical and Geotechnical Investigations
- Kipper - Sub-Sea Drilling
- Turrum Phase 3 Drilling
- South East Australia Carbon Capture & Storage (SEA CCS) Project
- Bream Greenhouse Gas Appraisal Environment Plan (SEA CCS)

Like to be consulted about these activities?

Esso is working to identify and consult with relevant persons [stakeholders] whose functions, interests, or activities may be affected by one or more of Esso's proposed activities. Please fill in the [Esso Consultation Questionnaire \(sli.do\)](#) in the Esso Consultation Hub to let us know if you'd like to be consulted or have any questions or feedback.

Please refer to the NOPSEMA brochure [Consultation on offshore petroleum environment plans brochure.pdf \(nopsema.gov.au\)](#) to understand more about consultation on offshore petroleum environment plans assessed under the *Offshore Petroleum and Greenhouse Gas Storage (Environment) Regulations 2023*

Your feedback and our response will be included in the relevant regulatory application documentation and submitted to the regulator.

Please connect us with other interested people

If there is anyone you know who may be interested in our activities, we encourage you to share this information with them.

To find out more information

For more information about Esso's activities and other projects, please go to the Esso Consultation Hub at:



<https://corporate.exxonmobil.com/locations/australia/our-approach>



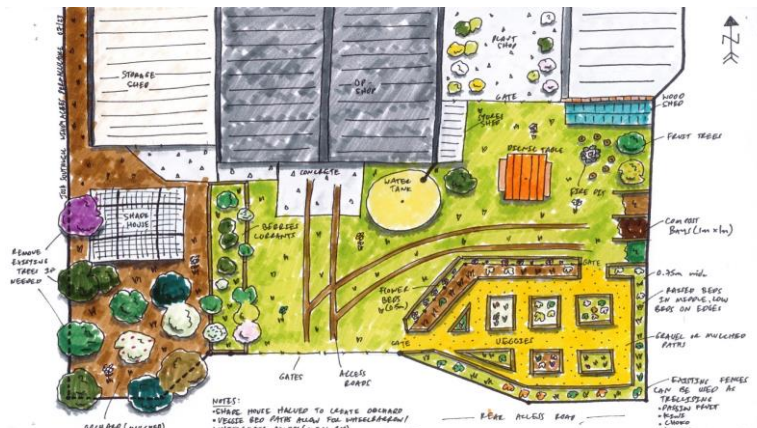
Welshpool & District Advisory Group are looking into holding a Halloween Community Event at Welshpool Park. We would love to hear from our Welshpool residents and businesses if they would like to participate and have their house/shop put on a map for our local children to partake in some trick or treating on October 31st. Please drop us an email, Facebook message or drop into the Rural Transaction Centre for more information.

Welshpool Area Future Focus Group

The new playground is now completed and it's great to see so many families enjoying themselves. There is still timber edging to go around the playground, this will be done shortly. Then later this year the new rotunda will be built.

The community garden located at the back of the Welshpool Op Shop is about to get started. Once the raised garden beds are built and all supplies are delivered, we will be arranging a working bee for helpers to come along and fill and plant out the garden beds, set up the shade house and plant fruit trees.

Stay tuned for a date, everyone is invited!

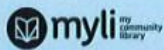


**E.W. & H.P. FOWLER
WELSHPOOL OUTDOORS &
ORIGIN GAS SUPPLIES**

**19 MAIN STREET
WELSHPOOL VIC 3966
PH: 0356881304**

welshpooloutdoors@bigpond.com





Youth Fest
Disco
bookings:

SILENT DISCO

Toora Community Hall

Wednesday 25th
September
3:30pm - 4:30pm
Ages 12 - 25



September School Holiday Events



School Holiday
bookings:



myli.au
Foster Library
0356821735

MOSAIC MAGIC

Double-sided mosaic
pictures and patterns.



FOSTER LIBRARY
Monday September
30, 11am.



ROYAL CREATIONS

Make your own royal items to
take home. We will be making
crowns, sceptres, swords plus
more.

FOSTER
LIBRARY
2 PM FRIDAY
OCTOBER 4



Fun Family/Group Portrait Workshop Thursday, 3rd Oct



'Celebrate Loved Ones'

Come together these
School Holidays to
celebrate the ones you love
by creating a unique, fun
family/group portrait
mounted on individual
dinner plates.

Suitable for groups of two or
more, families/couples/
friends/children (ages 3+).
No experience necessary.

Maximum 12 per session

Times:

10.00am – 12.00pm or
from 3.30pm – 5.30pm

Cost: \$15 per family/group
(Cash only)

Bookings:

To book please call or
text Cameron
PH: 0405 258 606

Venue:

Toora Town Hall, Toora

PORT WELSHPOOL & DISTRICT BOWLING CLUB
ANNUAL GENERAL MEETING
CHANGE OF DATE

NEW DATE
SUNDAY

**SEPTEMBER 22,
2024**

COMMENCING 10 AM

PORT WELSHPOOL
BOWLS CLUB ROOM

The Port Welshpool & District Bowling Club

2024/25

GREEN OPENING

WILL BE ON

SUNDAY 29TH SEPTEMBER,
COMMENCING 11 AM.

BBQ LUNCH PROVIDED

BOWLS AVAILABLE,
ALL ARE WELCOME.



Port Welshpool Market
Sunday September 29th
9am – 2pm
Old Ferry Terminal
Port Welshpool

"A Fabulous Community Market"

**JBN
CAR CLEANING**



0428683533

service list

Exterior Clean

Interior Clean

Basic to Ultimate Options

Sedans, Wagons, SUV, 4WD.

Utes

Gift Vouchers Available

Price List Available

Servicing Yarram to Fish Creek

Friday, Saturday or Sunday



**Driving
Miss Daisy®**
We're There For You

Alice Filon

Independent Franchise Owner
Gippsland

**For Enquiries & Bookings
Call: 0492 122 024**

E: gippsland@drivingmissdaisy.com.au



www.drivingmissdaisy.com.au

Companion driving for: Medical appointments,
Hairdresser, Shopping, Scenic drives, Airport/rail/bus
transfer, Pets to vet, School & children's activities

Danny O'BRIEN MP
Member for Gippsland South

📍 54B Cunninghame St, Sale VIC 3853

☎ 03 5144 1987

✉ danny.obrien@parliament.vic.gov.au

🌐 www.dannyobrienmp.com.au

Working for Gippsland South

[f](#) [t](#) [i](#) /dannyobrienmp

THE NATIONALS for Regional Victoria



Mainly music

Hi come n check out this great music program
Fridays 9:30. Actions, drama, dance learning
numbers etc.

Cost \$3 per family. Morning tea provided for
parents n littles. 150 commercial rd yarram. All
preschool parents n carers welcome.



Welshpool Supermarket & Café

Pies, pasties, sandwiches & salads
home-made slices & muffins.
Hot & cold drinks & more

WINTER TRADING HOURS

Monday – Friday 7am to 3pm

Saturday 9am to 2pm

CLOSED SUNDAY



WELSHPOOL CEMETERY TRUST

CHAIRPERSON

DAVID GRILLS

0428 858 961

FOSTER SEAFOODS



35 Main Street, Foster

Ph: (03) 5682 2815

With catches of Inlet fish arriving within the shop on a
daily basis and our vessels returning from extended trips
into Bass Strait, you can be assured that the quality is
second to none.

We also have an extensive list of products with very
competitive prices.

Port Welshpool and District Bowling Club

Contact Angela Tisler 0448440153

portwelshpoolbc@gmail.com

22 Bowling Club Rd

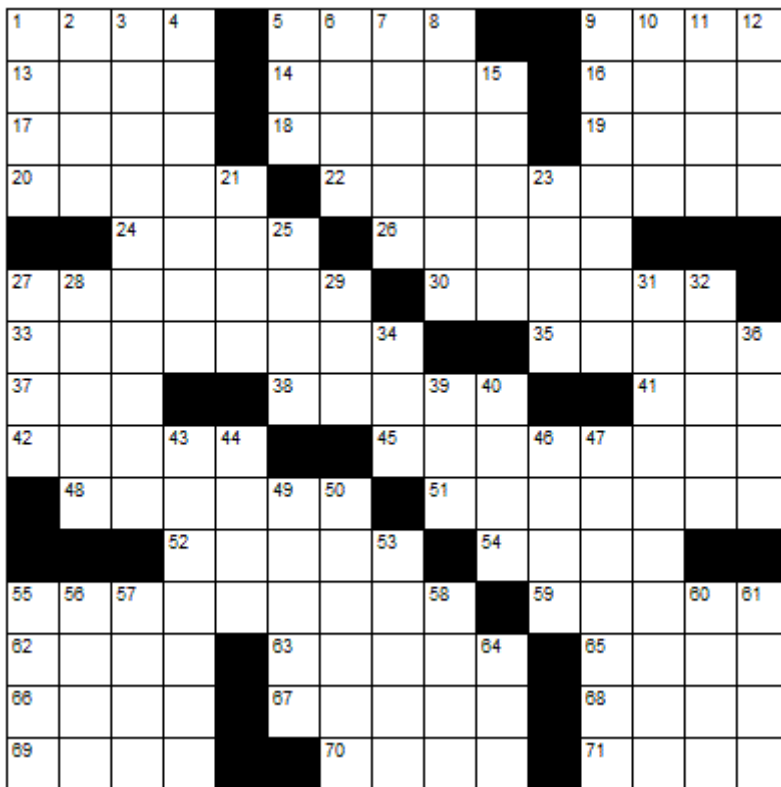
(Left of the Long Jetty along the foreshore)
Social and Barefoot Bowls Fridays during the
bowls season (Oct - end of April) from
4:30pm.

Bowls provided.

Bar service available. BBQ & Salad dinners
available most weeks at 6:30pm

**NEW MEMBERS AND BOWLERS MOST
WELCOME**

CROSSWORD



Down

1. Detailed account
2. Lyric poems
3. Comprehensible
4. A poison
5. Supersonic transport
6. Ragamuffin
7. Scare
8. Northern
9. Cooking tool
10. Rescue
11. Anagram of "Seek"
12. Lairs
15. Spiteful
21. Arid
23. Wife of Zeus
25. Sodium chloride
27. Dugout shelter
28. What dispensaries dispense
29. Downwind
31. Thoughtful
32. Protective covering from sunlight
34. Driveway surface
36. Mimicked
39. Purge
40. Agitated state
43. An eight-sided polygon
44. By mouth
46. Adhesive
47. Dark solar area
49. Be extant
50. Harnessed together
53. Fixed gaze
55. Assess
56. Mild expletive
57. Ripped
58. Apart from this
60. French for "State"
61. Rattling breath
64. Light Emitting Diode

Across

1. Couch
5. Q-Tip
9. Brought into play
13. Jewish month
14. Beauty Parlor
16. Plunder
17. Obtains
18. Coronet
19. Smooth or level
20. Fire residues
22. Quality of not being stale
24. Anagram of "Nose"
26. Couples
27. Navy bigwig
30. Words to a song
33. Wrist ornament
35. Hawaiian greeting
37. Chafe
38. Rips
41. Opening
42. Snow house
45. Best seats for boxing
48. Clandestine
51. Watered down
52. Government fees
54. Albacore or bluefin
55. Strike back
59. Aromatic compound
62. Excited
63. Tiny
65. Falafel bread
66. Tropical root
67. To the point
68. Egg-shaped
69. Biblical garden
70. Exploit
71. French for "Head"



Winning entry will receive a free coffee and cake from the Welshpool Café & Supermarket



LAST MONTHS CROSSWORD RESULT

S	O	D	A		A	R	C	S		B	U	I	S		
E	V	I	L		R	I	O	T	S		E	T	A	T	
T	E	S	T		R	O	B	O	T		R	A	G	E	
A	R	C	E	D		T	R	O	O	P	S	H	I	P	
			O	R	A	L		A	G	R	E	E			
A	M	N	E	S	I	A		E	M	E	R	G	E		
H	A	N	D	H	O	L	D			S	K	U	L	L	
E	M	E			N	E	A	R	S			A	V	E	
M	A	C	A	W			D	U	N	G	A	R	E	E	
		S	T	R	O	N	G		B	I	O	M	A	S	S
			C	O	O	L	S		P	A	I	N			
U	P	W	A	F	T	I	N	G		L	A	T	H	S	
G	O	A	D		E	D	I	L	E		B	E	E	P	
L	U	G	E		S	E	P	I	A		L	E	E	R	
I	R	E	S			D	E	B	T		E	D	D	Y	

Sponsored by: **Welshpool Supermarket**

Entries must be received before
15th October

All correct entries will be put into a hat and the winner will be drawn by Supermarket staff. No correspondence will be entered into etc.

Please remember to double-check your spelling.

Remember to include your name, contact number and date on your returned entry, Thank you.

Winner of the August Crossword:

Elaine Black





Community Bank
Toora & District, Foster and Welshpool

Need help with the costs of study?

Applications are invited from eligible students who require assistance with educational costs in 2025.

Community Bank Toora & Foster Llew Vale Scholarship Program.
To apply visit

<https://communitybanktoorafoster.smartygrants.com.au/>



Community Enterprise
Foundation™

Community Bank Scholarships will be funded from management accounts of the Community Enterprise Charitable Fund ABN 12 102 649 968 (the Fund), The Bendigo Centre, Bendigo VIC 3550. Sandhurst Trustees Limited ABN 16 004 030 737 AFSL 237906, a subsidiary of Bendigo and Adelaide Bank Limited ABN 11 068 049 178, AFSL 237879, is the trustee of the Fund. OUT_40195034, 06/09/2024



Supporting your community Sponsorship Program Now Open

When you choose to bank with Bendigo Bank, good things happen in your community.

Find out more. Call 03 5686 2000 or search Bendigo Bank Toora, visit <https://communitybanktoorafoster.smartygrants.com.au/> to apply today.
Program Opens 1 September 2024, Closes 30 September 2024.
[bendigobank.com.au](https://communitybanktoorafoster.smartygrants.com.au/)



Bendigo and Adelaide Bank Limited ABN 11 068 049 178, AFSL/Australian Credit Licence 237879 A1389131, OUT_36400600, 06/08/2024

TABLE TENNIS

WELSHPOOL MEMORIAL HALL

Please join us for a friendly social hit of
table tennis

Wednesday 6.30pm-8.30pm

Entry is only \$2 per session

Please contact JJ on 0400 114 905
for all enquiries

All equipment supplied

All ages, all levels welcome!



Carpet Bowls

Old Ferry Terminal, Port Welshpool

Come along for a fun afternoon of
Carpet Bowls

No membership

or equipment required,

everything is supplied for you.

Every Tuesday afternoon:

12.30 - 3.00pm

\$5 per session followed by tea,
coffee, biscuits and a chat.

Everyone welcome!



LOCAL SERVICES.....

How can we help?

For information and assistance:


- 9 Smith Street, Leongatha VIC 3953
- 5662 9200
- council@southgippsland.vic.gov.au
- www.southgippsland.vic.gov.au
- Facebook: southgippslandshirecouncil



**Snap
Send
Solve**

Did you know that
you can report
something that
needs fixing via
Snap, Send, Solve?

Simply download
the app from the App
Store or Google Play
and start reporting



AAC MOBILE
AUTO AIR
CONDITIONING

Maintenance & Repairs to...

TRUCKS * TRACTORS * MACHINERY * PASSENGER & FOOD TRANSPORT VEHICLES

Ian Dubignon **M. 0448 761 642**

aacautoair.com.au

WELSHPOOL CRANES

0428 171 666

Mobile Crane
Dogmen
Piggers

Gary Mason

info@gmmason.com.au



THROCKMORTON SERVICES PTY LTD
**BUILDING MAINTENANCE
& CARPENTRY**

Email: throckmorton@bigpond.com

Mb: 0417 582 918

ABN 72 875 167 020



John Hoy
Trade qualified Farrier
(25 years experience)

0447 229 390

ALBERTON TIMBER
& TREATMENT PLANT P/L

FOR ALL YOUR TREATED PINE NEEDS

POSTS SAWN TIMBER DECKING CUSTOM TREATING
SLEEPERS NUTS AND BOLTS PALINGS AND MORE

SOUTH GIPPSLAND HIGHWAY, ALBERTON, VIC, 3971

Ph (03) 5183 2437

Fax (03) 5183 2659

Email sales@albertontimber.com.au



CONCRETER

Delivering Quality Concrete Services for
Residential, Commercial & Farm Upgrades.

CALL KANE
TODAY FOR A
FREE ON-SITE
CONSULTATION

5613 2013 | 0400 840 729

E: admin@sgconcrete.com.au

W: www.sgconcrete.com.au

SOUTH GIPPSLAND SEPTIC TANK CLEANING

Also Portable Toilets Hire

Call Chris Whittle

(03) 5688 1572



TV DATA PHONE

Digital Antennas, Masts, Repairs. TV Wall Mounts,
Speakers, Home Theatre & Hidden Wiring. WIFI.
Cameras & Security Systems. Phone & Computer
Outlets. Networks. Satellite Dish and Receivers, VAST
and StarLink. Mobile B.B. Antennas. Test and Tagging.

Licensed Cable & Security Installer
Domestic, Commercial & Industrial
Steve Mooney 0427 257 222

Kirwan Builders

TK Construction

"for all your building needs"

TK Construction - Michael Kirwan

6565 South Gippsland Highway HEDLEY VIC 3967

P: 03 5184 1223 | M: 0428 911 900

E: kirwanbuilders@gmail.com

HIA MEMBERSHIP: 813 711 | DB-U: 20399 | A.B.N: 40 896 158 242

Gatt's Tile Roof Restorations

We cater for everything roofing

- Pressure washing -Roof painting
- Repointing tile roofs -Install gutter guard
- Replace broken tiles -Repair leaks.

-External high pressure washing of:

- *Houses *Buildings
- *Driveways *Gutters



Port Welshpool workshop

Morwell workshop

Please phone 0434 725 536

All work is done by tradesmen

Fully insured and WorkSafe approved.

"All you need is love. But a little chocolate now and then doesn't hurt."

Port Welshpool & District Museum



The building that houses the collection was designed and built by John Avery in 1881 for W.B.M. Smith. Being the first large home in the village, it became the unofficial community centre, conducting dances, weddings, church services and even a wine salon.

ADMISSION CHARGES

Adults	\$5
Pensioner	\$4
Student	\$2
Family	\$10

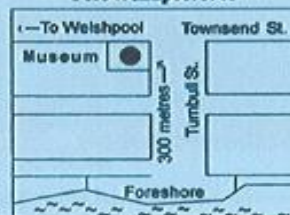
Opening Hours 12.30pm - 3.30pm
Sat, Sun, Public Holidays
and by Appointment.

or call the Museum Secretary
Janet Taylor 0413 199 776

Website - ptwelshpoolmuseum.wixsite.com/pw-museum

Group visits are welcomed.

Cnr. Townsend & Turnbull Streets
Port Welshpool 3965



ANTHONY BRAVINGTON

Cleaning & Property Maintenance Contractor

- Commercial Cleaning, Domestic Cleaning and all types of Property Maintenance
- Accommodation Contracts
- Office Building Contracts
- Retail Shops Contracts
- School Cleaning Contracts
- Builders Cleans
- All Property Maintenance etc
- Window Cleaning
- Carpet Steam Cleaning



THURSDAYS & FRIDAYS ONLY

1 bedroom house	\$70
2 bedroom house	\$90
3 bedroom house	\$120
4 bedroom house	\$150

Call Anthony for all your cleaning needs

Mobile: 0418 146 986

Email: bravtecleaning@gmail.com

RON LEACH

CALF BUYING

Mondays & Thursdays

Top Prices

Also buying friesland heifers
& other small beef stock

Call 0429 881 464



Loaded Banana Bread

-makes 1 loaf-



1½ cups all-purpose flour
2½ teaspoons baking powder
¼ teaspoon salt
6 tablespoons butter, softened
⅓ cup granulated sugar
⅓ cup packed brown sugar
2 eggs

3 ripe bananas, mashed
½ teaspoon vanilla
1 can (8 ounces) crushed pineapple, drained
⅓ cup flaked coconut
¼ cup mini chocolate chips
⅓ cup chopped walnuts (optional)

1. Preheat oven to 350°F. Spray 9×5-inch loaf pan with nonstick cooking spray.
2. Whisk flour, baking powder and salt in small bowl. Beat butter, granulated sugar and brown sugar in large bowl with electric mixer at medium speed about 3 minutes or until light and fluffy. Beat in eggs, one at a time, scraping bowl after each addition. Add bananas and vanilla; beat just until blended.
3. Gradually add flour mixture at low speed, beating just until blended. Fold in pineapple, coconut and chocolate chips. Spread batter in prepared pan; top with walnuts, if desired.
4. Bake 50 minutes or until toothpick inserted into center comes out with a few moist crumbs. Cool in pan 1 hour. Remove to wire rack; cool completely.

The Month Of September

BIRTH STONE



SAPPHIRE

BIRTH FLOWER



ASTER

STAR SIGNS



VIRGO & LIBRA

Personality

September borns are known for being meticulous and never make a move without considering the consequences. They pay close attention to the details which gives them a competitive advantage, aiming close to perfection, their favourite destination.

Did you know...?

- The Romans believed that the month of September was looked after by the god of the fire and forge – Vulcan. Therefore, they expected fires, earthquakes and volcanic eruptions in this month.
- September is the only month with the same number of letters in its name as the number of the month: it is the ninth month and has nine letters.
- In the UK, September 26 is the most common birthday for people born in the last 20 years.

Special Days



06 SEPTEMBER
National
Read a Book Day



13 SEPTEMBER
Roald Dahl
Day



20 SEPTEMBER
National
Doodle Day



21 SEPTEMBER
International
Day of Peace

Famous September Birthdays

Adam West, Agatha Christie, Amy Winehouse, Andrea Bocelli, Beyonce Knowles, Bill Murray, Brigitte Bardot, Bruce Springsteen, Confucius, Freddie Mercury, Greta Garbo, Ivan Pavlov, Karl Lagerfeld, Monica Bellucci, Queen Elizabeth I, Richard I, Sophia Loren, Stephen King, T. S. Eliot, Truman Capote.

September

Spring Word Search

s	n	a	i	l	m	b	f	r
e	f	f	l	o	w	e	r	a
b	r	n	g	b	i	e	o	i
e	o	a	s	d	t	s	e	n
t	g	i	u	r	u	e	d	b
i	w	o	n	k	n	e	m	o
k	l	p	b	i	r	d	a	w
c	j	f	a	e	l	s	t	h

Word Bank

flower rainbow kite bird
sun frog nest seeds
cloud bee snail leaf